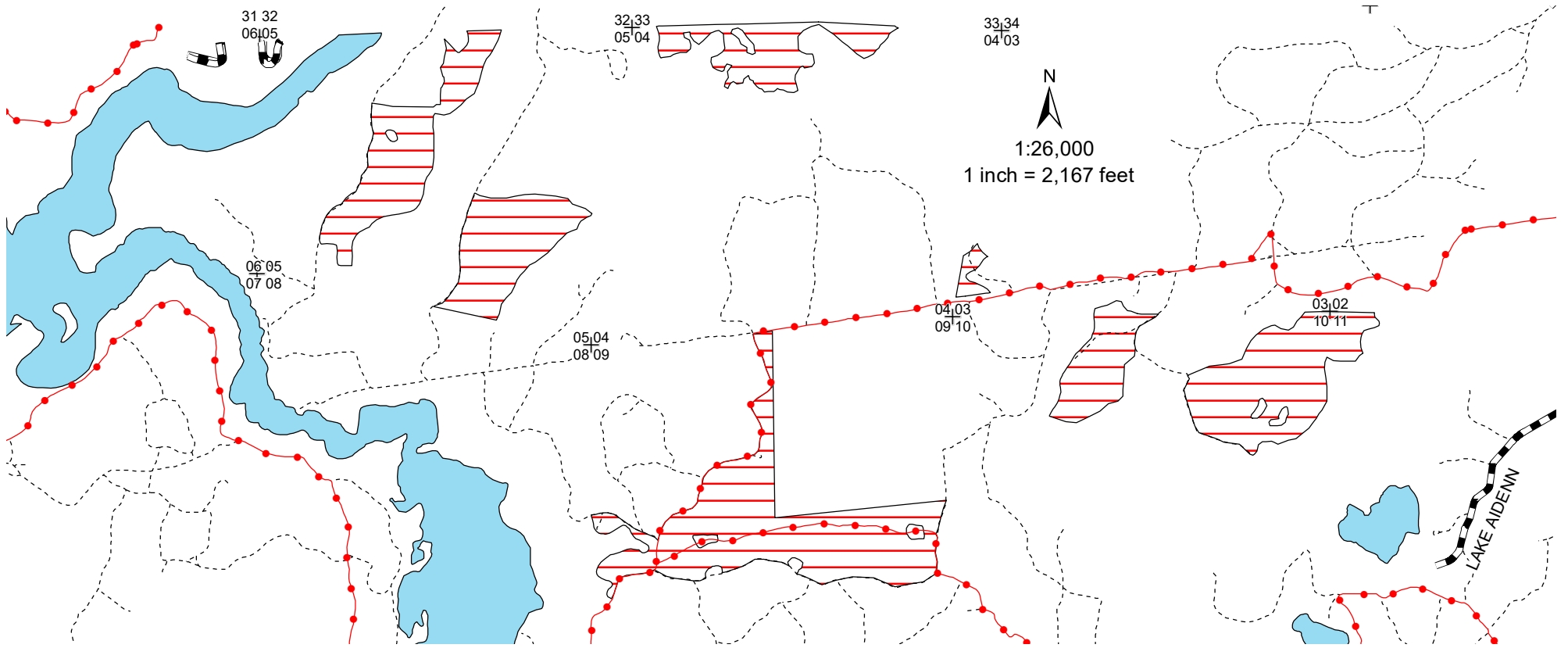


**NORTHERN HIGHLAND AMERICAN LEGION STATE FOREST
 C56 STANDS 1 & 5, C57 STAND 1, C58 STAND 7 & C59 STAND 1
 TRIPLE A ASPEN - 364 ACRES
 TOWN OF CLOVERLAND T40N, R9E, SECTIONS 32 & 33
 TOWN OF SUGARCAMP T39N, R9E, SECTIONS 3,4,5,8,9, 10 & 11
 NHAL - SF MASTER PLAN MGMT AREA 6 - ONEIDA SANDY PLAINS - FOREST PRODUCTION**



- Legend**
- + Section Corner
 - ▬ Town and County Roads
 - Snowmobile Trails
 - Woods Roads
 - ▭ Harvest Area
 - Lakes

Area 6: ONEIDA SANDY PLAINS

C56 Stand 1 (56 Acres) is an aspen stand with an origin year of 1984. This stand will undergo a coppice with standards to regenerate the aspen and create age class diversity on the greater landscape. Additional entries will be scheduled for this stand in the future.

C56 Stand 5 (48 Acres) is an aspen stand with an origin year of 1999. This stand will undergo a coppice with standards to regenerate the aspen and create age class diversity on the greater landscape. Additional entries will be scheduled for this stand in the future.

C57 Stand 1 (36 Acres) is an aspen stand with an origin year of 1986. This stand will undergo a coppice with standards to regenerate the aspen and create age class diversity on the greater landscape. Additional entries will be scheduled for this stand in the future.

C58 Stand 7 (120 Acres) is an aspen stand with an origin year of 1973. This stand will undergo a coppice with standards to regenerate the aspen and create age class diversity on the greater landscape. Additional entries will be scheduled for this stand in the future.

C59 Stand 1 (104 Acres) is an aspen stand with an origin year of 1982. This stand will undergo a coppice with standards to regenerate the aspen and create age class diversity on the greater landscape. Additional entries will be scheduled for this stand in the future.

Map Produced by
 Jordan Truitt 3/24

The entire sale area lies within Management Area 6: Oneida Sandy Plains - Forest Production
 This map is not a survey of the actual boundary of any property this map depicts