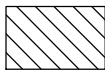
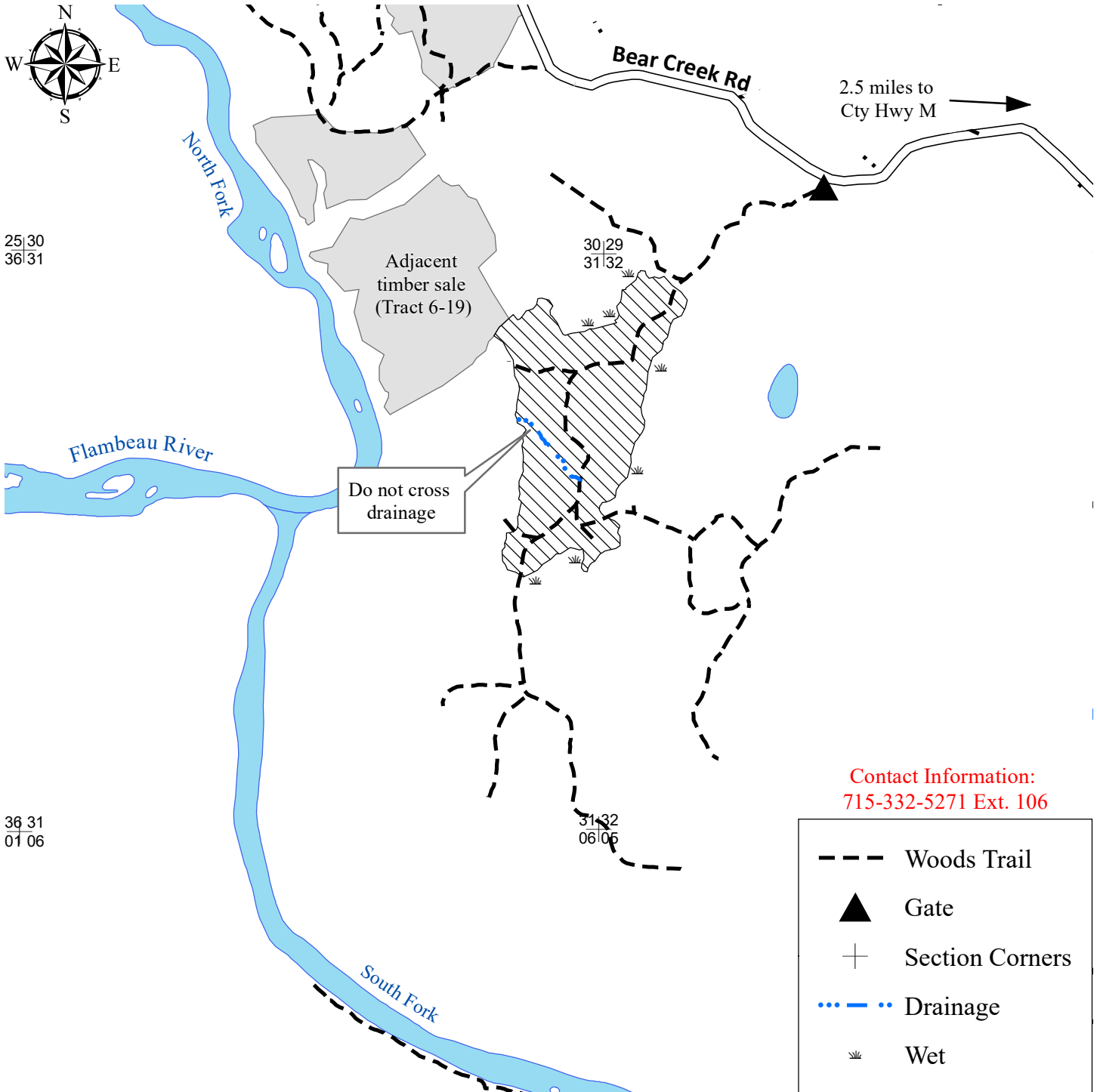


# Tract 13-21 (Chainsaw Redemption) - Flambeau River State Forest

Parts of: NENE, SENE, NESE, Sec. 31, NWNW, SWNW, Sec. 32, T37N-R3W, Sawyer County



 **Selection Area (60 acres)** – Bounded by red paint. Harvest all orange marked trees. Do not cut snags or cull trees.



0 0.25 0.5 1 Miles  
1:15,840

Mapped by Justin Cook  
"This map is not a survey of the actual boundary of any property this map depicts"