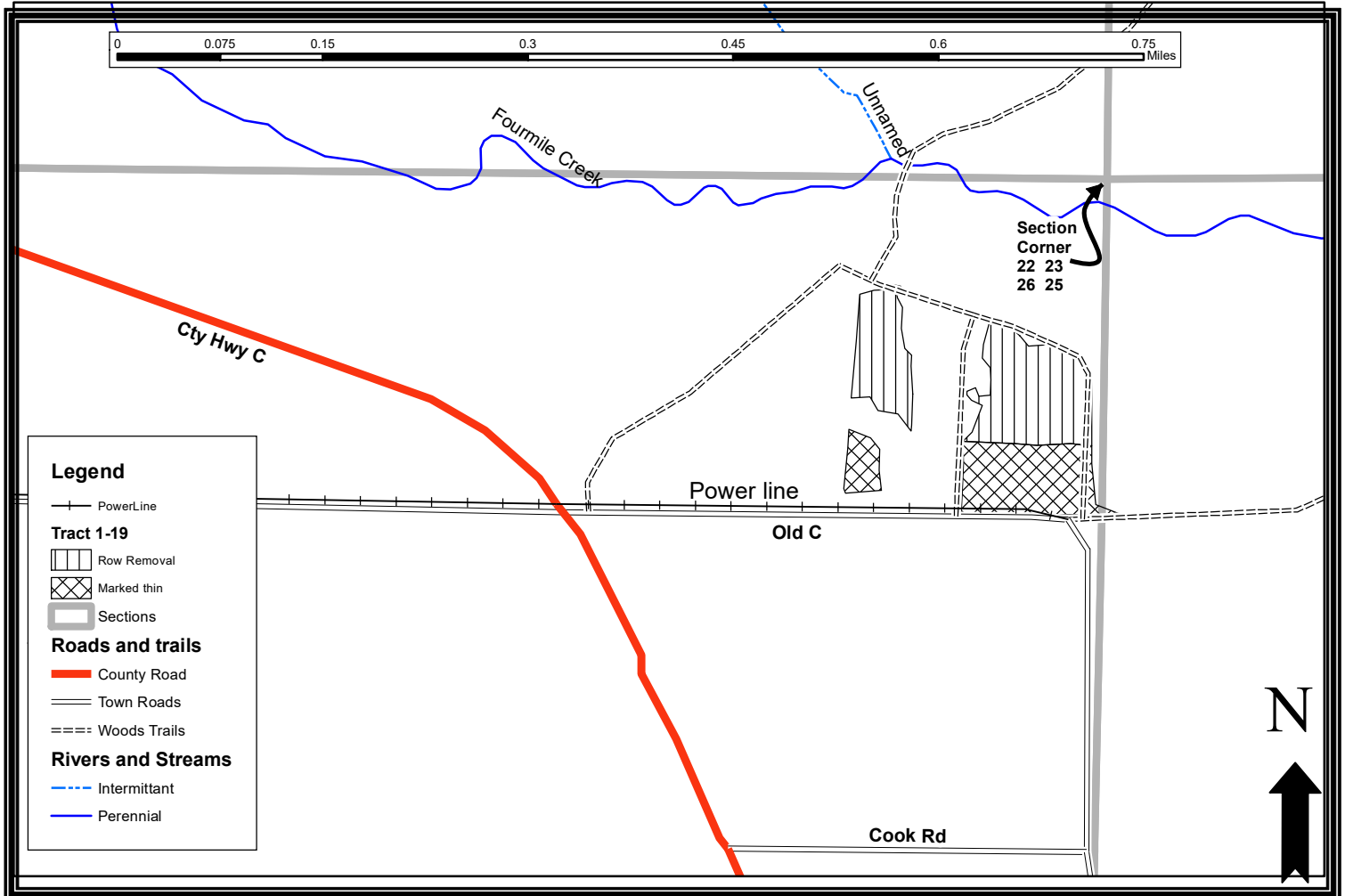


# Homestead Pine – South Shore Lake Superior Fisheries Area

Forester: Kara Oikarinen (715) 373-6165	Twp 49N	Range 05W	Sec: 27	Estimated Volumes:		
Acres: 10	Township: Washburn			Species	Tons to 4" top	Ave. Diameter (in)
Soil: Clay	Compartment: 03					
Topography: Level	Tract Number: 1-19			White Pine*	370	9"
Scale:	Minimum Bid: \$5,181			Red Pine	330	9"
				<b>Total</b>	<b>700</b>	

\*contains 1% balsam fir and white spruce



- This is a ticket sale. The sale will be sold by the ton.
- This is a dry or frozen conditions only sale.
- The sale will not be sold as a whole tree harvest. Slash is to be scattered and cut to no more than 3' of the ground.
- Cut all trees in every 3<sup>rd</sup> row in the Row Removal unit. Utilize to a minimum 4" top diameter.
- Harvest every tree marked with orange paint in the Marked Thin unit. Utilize to a minimum 4" top diameter.
- Cut pine products must be removed from the site within three weeks if cut between May 1<sup>st</sup> to August 31<sup>st</sup>.
- Sale boundaries defined by the edges of planted pine, as shown on map.
- Harvest area consists of 10 acres of plantation white pine, red pine, and some white spruce and balsam fir.
- Access is a gated DNR road from Old County Highway C.
- Open area adjacent to plantation is a wildlife opening – no parking or decking allowed.
- Landing areas to be confirmed at pre-sale meeting.
- Decking of wood along town roads will not be allowed without permission from township
- Comply with Best Management Practices for Invasive Species: Prior to moving equipment onto or off the sale area, scrape or brush soil and debris from exterior surfaces to the extent practical.