

Upper Fox & Wolf Volunteer Monitoring Fact Sheet

The EPA approved the Upper Fox-Wolf (UFW) TMDL in 2020. The TMDL identifies the need for reductions in Total Phosphorus (TP) and Total Suspended Solids (TSS) in waterbodies throughout the basin to meet water quality standards. A total of 43 streams and rivers and 19 lakes and reservoirs are impaired for excess phosphorus while a total of 19 streams and rivers are impaired for excess sediment. Phosphorus is an essential nutrient for plant growth, but can have detrimental effects on lakes, rivers, and streams when excess amounts are introduced. Common forms of pollutant delivery in these systems include surface runoff from urban and agricultural areas and discharges from wastewater treatment facilities, industrial businesses, and farms.

To assess long-term trends in water quality, 24 stream sites were chosen as part of the UFW volunteer monitoring program to collect water samples throughout the UFW basin. There were 20 sites when this program started in 2020, and four were added in 2023. The UFW volunteer monitoring program relies on volunteers to collect reliable data to assist the DNR in tracking water quality trends overtime. Volunteers collect water samples once per month, May through October. Samples are shipped to the State Lab of Hygiene in Madison and are analyzed for Total Phosphorus, Total Suspended Solids, and Total Nitrogen.

UFW BASIN QUICK FACTS

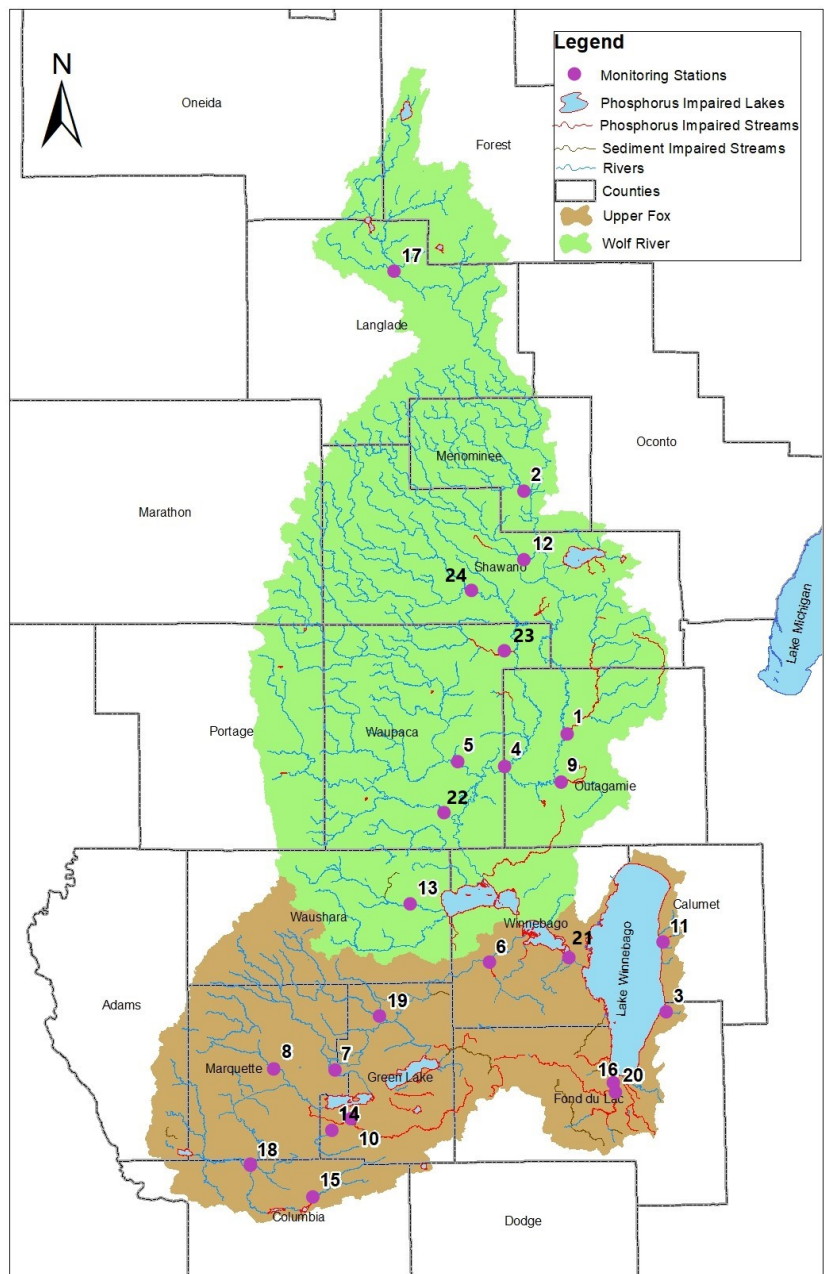
- 5,900 square mile watershed area
- Covers 18 counties
- Includes 5 Tribal Lands
- 32 Concentrated Animal Feeding Operations (CAFOs)
- 29 permitted Municipal Separate Storm Sewer System (MS4s*)
- 78 Dischargers (municipal and industrial)

Want to get involved? Contact:

Katherine Wendorf
Water Resource Management Specialist
Natural Resources Program Coordinator
T: (920) 296-5126
Katherine.wendorf@wisconsin.gov

*MS4s - municipal separate storm sewer system; municipalities with WPDES permits for stormwater management.

See Backside for exact sample locations



	Stream Name	SWIMS Station Name	County	SWIMS ID	Latitude	Longitude
1	Shioc River	Shioc River at STH 187	Outagamie	453030	44.464379	-88.56017
2	West Branch Wolf River	West Branch Wolf River at West Branch Rd	Menominee	403003	44.94093	-88.66435
3	Pipe Creek	Pipe Creek- 30 feet above HWY 151 Bridge	Fond du Lac	10016803	43.91841	-88.3103
4	Embarrass River	Embarrass River at New London HWY 54	Outagamie	10033493	44.405953	-88.73024
5	Little Wolf River	Little Wolf River at Royalton STH 54	Waupaca	693217	44.418276	-88.85648
6	Waukau Creek	Waukau Creek at CTH E USGS Site ID 04073970	Winnebago	713285	44.01841	-88.7854
7	Mecan River	Mecan River at CTH C	Marquette	393005	43.816794	-89.20955
8	Montello River	Montello River at 11 th St Bridge USGS Site ID 04072845	Marquette	1022879	43.82047	-89.3575
9	Bear Creek	Bear Creek at STH 76	Outagamie	453259	44.365693	-88.57791
10	Grand River	Grand River at CTH H Near Kingston, WI	Green Lake	243015	43.711983	-89.1541
11	Mud Creek	Mud Creek at Mud Creek Rd	Calumet	83121	44.05352	-88.3171
12	Red River	Red River at Maple Ave	Shawano	10014632	44.803515	-88.65981
13	Pine River	Pine River at HWY 49	Waushara	10032735	44.13583	-88.9962
14	Belle Fountain Creek	Belle Fountain Creek at CTH B	Green Lake	243028	43.704172	-89.21482
15	Fox River	Fox River at HWY 33	Columbia	10014339	43.569939	-89.27703
16	West Branch Fond du Lac River	West Branch FDL at Forest Ave	Fond du Lac	10037662	43.77697	-88.4553
17	Wolf River	Wolf River at CTH T	Langlade	343057	45.367529	-89.01287
18	Neenah Creek	Neenah Creek at CTH CM	Columbia	113070	43.631283	-89.43518
19	White River	White River at White River Rd Landing	Green Lake	10041320	43.917482	-89.07898
20	East Branch Fond du Lac River	East Branch FDL at 12 th St	Fond du Lac	10014745	43.76557	-88.4511
21	Sawyer Creek	Sawyer Creek at N Westfield Street	Winnebago	10034847	44.02862	-88.57722
22	Waupaca River	Waupaca River at River Road Weyauwega	Waupaca	693020	44.31608	-88.90498
23	Pigeon River	Pigeon River at Klemp Rd	Waupaca	693135	44.62791	-88.73169
24	Embarrass River	Embarrass River at CTH M	Shawano	593168	44.74056	-88.80111

SWIMS– Surface Water Integrated Monitoring System, is a Wisconsin DNR information system that houses chemistry (water, sediment), physical, and biological (macroinvertebrate, aquatic invasive species) surface water data.

Want to find out more? Visit <https://dnr.wi.gov/topic/TMDLs/FoxWolf/index.html>