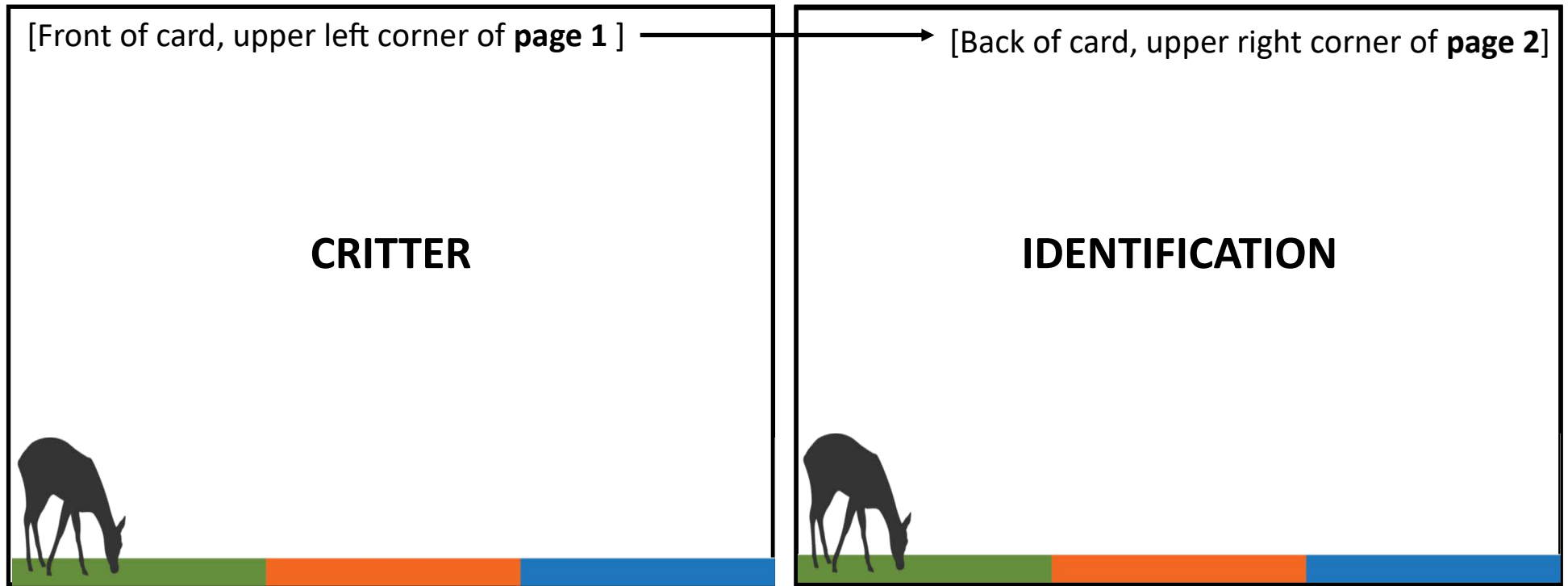


Flashcard Printing Instructions



We hope you enjoy these wildlife identification flash cards made using Snapshot Wisconsin photos!

Please print sheets both sided for correct formatting, while in PDF form the image should correspond opposite horizontally to the identification on the following page (see example above).

Please report any potential errors to team members at DNRSnapshotWisconsin@wisconsin.gov.

Test your animal identification skills with these *Snapshot Wisconsin* trail camera photos! Canids at night edition



Coyote

Canis latrans

Test your animal identification skills with these *Snapshot Wisconsin* trail camera photos! Canids at night edition



Red fox

Vulpes vulpes

Red fox

Vulpes vulpes



Wolf

Canis lupus

Wolf

Canis lupus

Gray fox

Urocyon cinereoargenteus

Red fox

Vulpes vulpes

Test your animal identification skills with these *Snapshot Wisconsin* trail camera photos!
Red Fox v. Gray Fox Edition



Gray fox

Urocyon cinereoargenteus

The gray fox has a smaller, cat like face compared to the red fox and coyote.

Red Fox and Gray Fox

We have two species of fox in Wisconsin, the red and gray fox. Although similar, there are definite characteristics that set these two species apart. Let's test your knowledge!



Red fox

Vulpes vulpes

Look for the black "boots"! Red fox have black on their legs that are very distinct from gray fox.

Gray fox

Urocyon cinereoargenteus

Check out the gray fox's distinctive "racing stripe"! The gray fox has a black dorsal stripe along with a black tipped tail.



Gray fox

Urocyon cinereoargenteus

There is a size difference between fox species.

Gray fox weight between 7 and 13 pounds,
whereas red fox weight closer to 15 pounds.

Red fox

Vulpes vulpes

Color CAN be a way to distinguish these two
species! Not surprisingly, red fox are red and
gray fox are gray!

Red fox

Vulpes vulpes

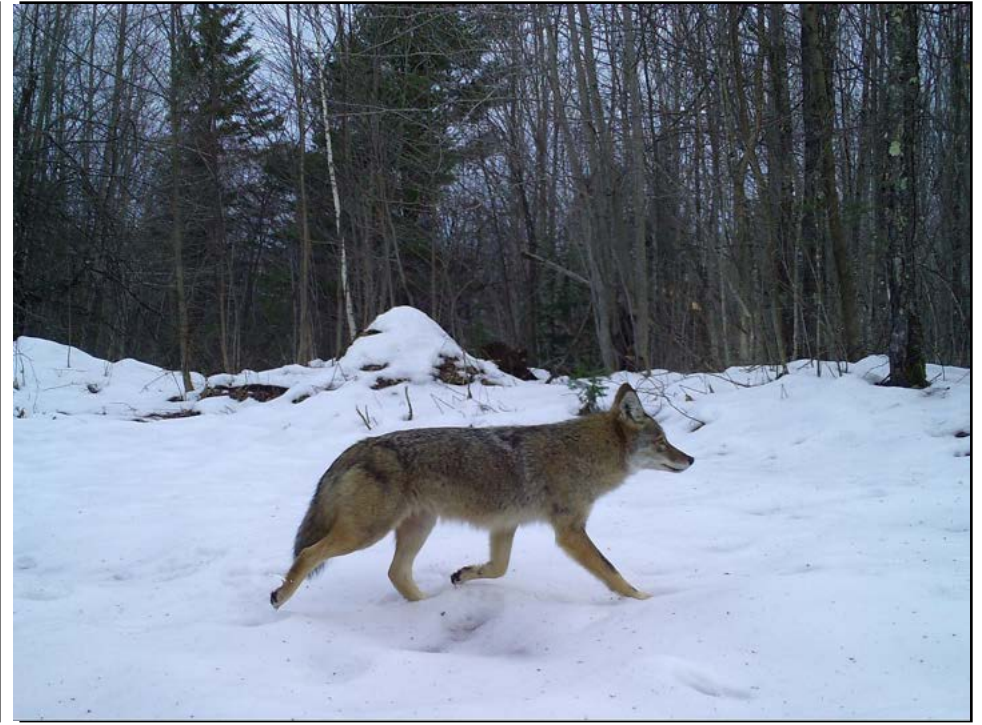
Those distinctive, black tipped ears are found
only on the red fox, not gray.

Red fox

Vulpes vulpes

The tail of the red fox appears to have been
dipped in white paint, whereas the gray fox has
a black tipped tail.

Test your animal identification skills with these *Snapshot Wisconsin* trail camera photos!
Wolf v. Coyote edition



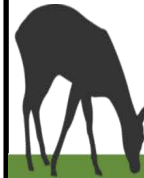
Coyote

Canis latrans

Notice the long ears and snout in proportion to the head. Wolves have blockier snouts.

Wolf v. Coyote

It is often difficult to distinguish between coyotes and wolves. Utilize differences in the size, ears, snout, foot and build of the animal. Can you tell who is who?



Coyote

Canis latrans

Check out that grin! The narrow, pointed snout is a clear indicator for coyotes.

Wolf

Canis lupus

Color is generally not a great indicator. Sometimes wolves can be all black, but usually are a mix of tan, brown, and black like a coyote.



Wolf

Canis lupus

Wolf ears are smaller and more rounded than coyote's. A 30 pound coyote can have ears larger than an 80 pound wolf!

Coyote

Canis latrans

A great example of the large ears of coyote.

Wolf

Canis lupus

The height of a wolf at the shoulder is 27-33 inches, whereas a coyote stands at 20-22 inches. Here, you can also see that the feet are fairly small.

Coyote

Canis latrans

Size matters! Use reference points to determine how large the animal is. Wolves are 5-6 feet long and weigh 50-100 pounds. Coyotes are 3-4 feet long and 25-45 pounds.