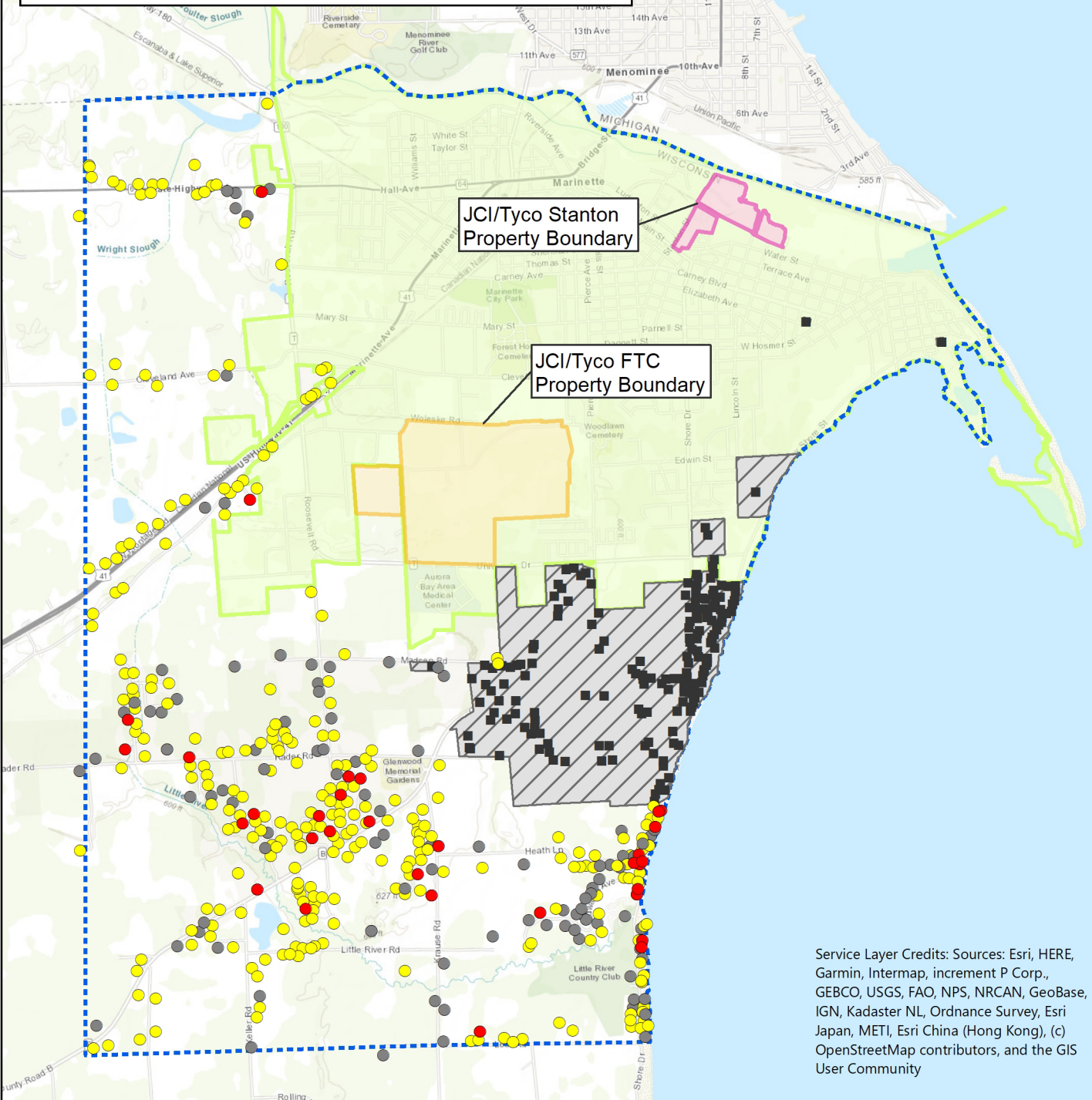


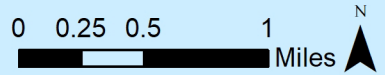
Expanded Site Investigation Area Potable Well Sampling Results Through 7/12/2021

Data presented are lab results and are still undergoing validation.



Service Layer Credits: Sources: Esri, HERE, Garmin, Intermap, increment P Corp., GEBCO, USGS, FAO, NPS, NRCAN, GeoBase, IGN, Kadaster NL, Ordnance Survey, Esri Japan, METI, Esri China (Hong Kong), (c) OpenStreetMap contributors, and the GIS User Community

Sample results colored in accordance with Dept. of Health Services Cycle 10 and Cycle 11 recommended groundwater standards, including the sum of FOSA, NET-FOSE, NET-FOSA, NETFOSAA, PFOS, PFOA.



Expanded Site Investigation Area Results	
Municipality Boundary	Non-detect
Expanded Site Investigation Area	Less than Recommended Enforcement Standard
JCI/Tyco Sampled Area	At or Above Recommended Enforcement Standard, or Hazard Index Meets or Exceeds 1
JCI/Tyco Sample	

