

# WISCONSIN DEPARTMENT OF NATURAL RESOURCES

## LAKE SUPERIOR SUPPLEMENTAL CREEL REPORT 2023

CHRIS ZUNKER and DRAY CARL

DNR Lake Superior Fisheries Management Team

April 29, 2024

Included in this document are supplemental creel statistics for the Wisconsin Department of Natural Resources (DNR) Creel Survey 2023, which provides more detailed breakdowns. Please refer to the DNR Lake Superior Creel Report 2023 for more information and the main text of the report.

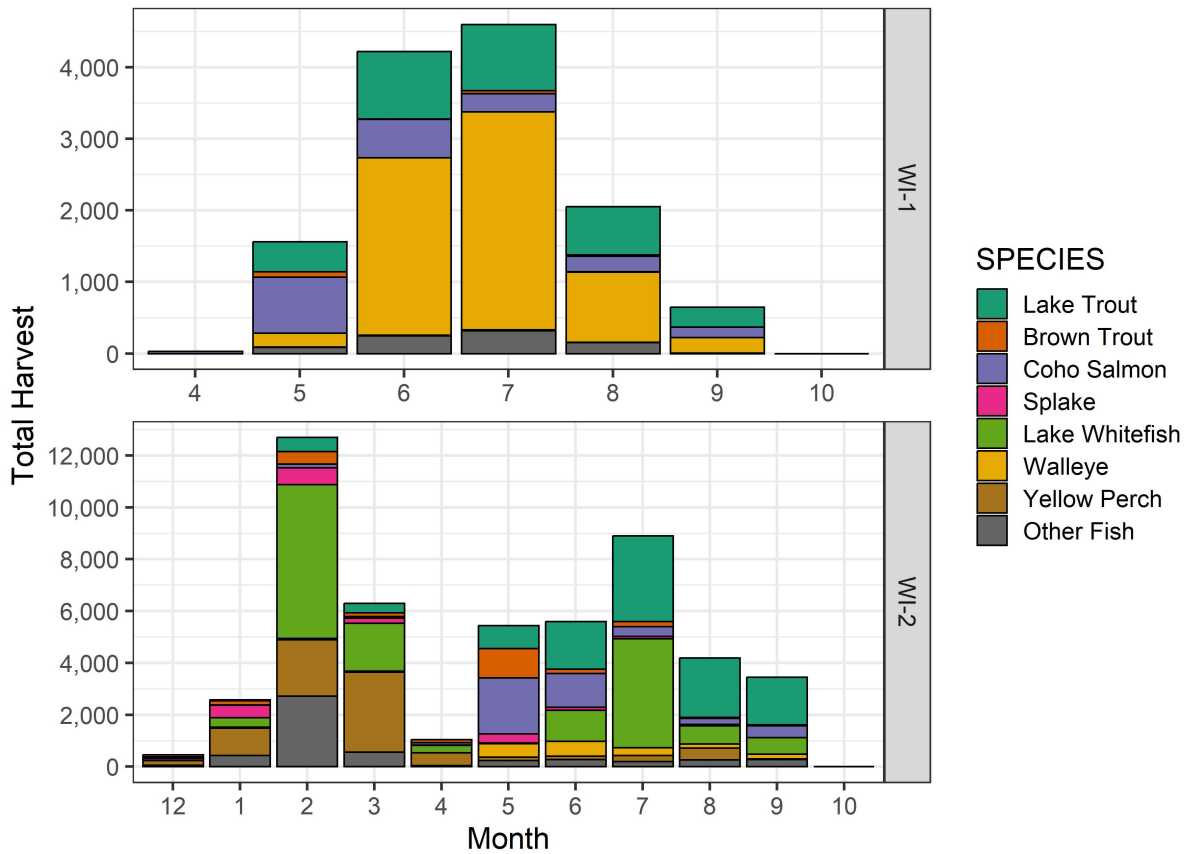


Figure 1. Total estimated harvest of the main seven species in the 2023 DNR Lake Superior Creel Survey within each management unit (WI-1 and WI-2) by month. All other species are represented into the "Other Fish" category.

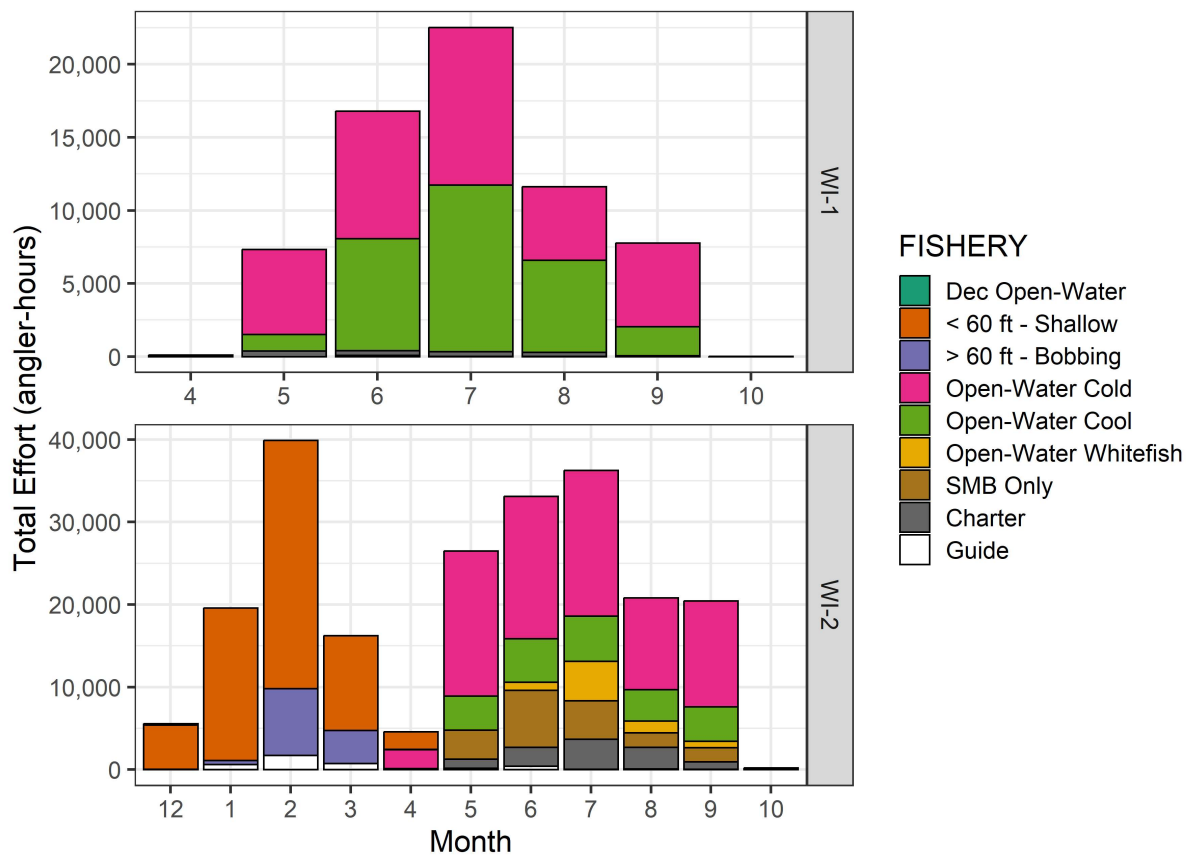


Figure 2. Total estimated fishing effort (angler hours) for each fishery in the 2023 DNR Lake Superior Creel Survey within each management unit (WI-1 and WI-2) by month.

### WI-1 Length Frequency 2023

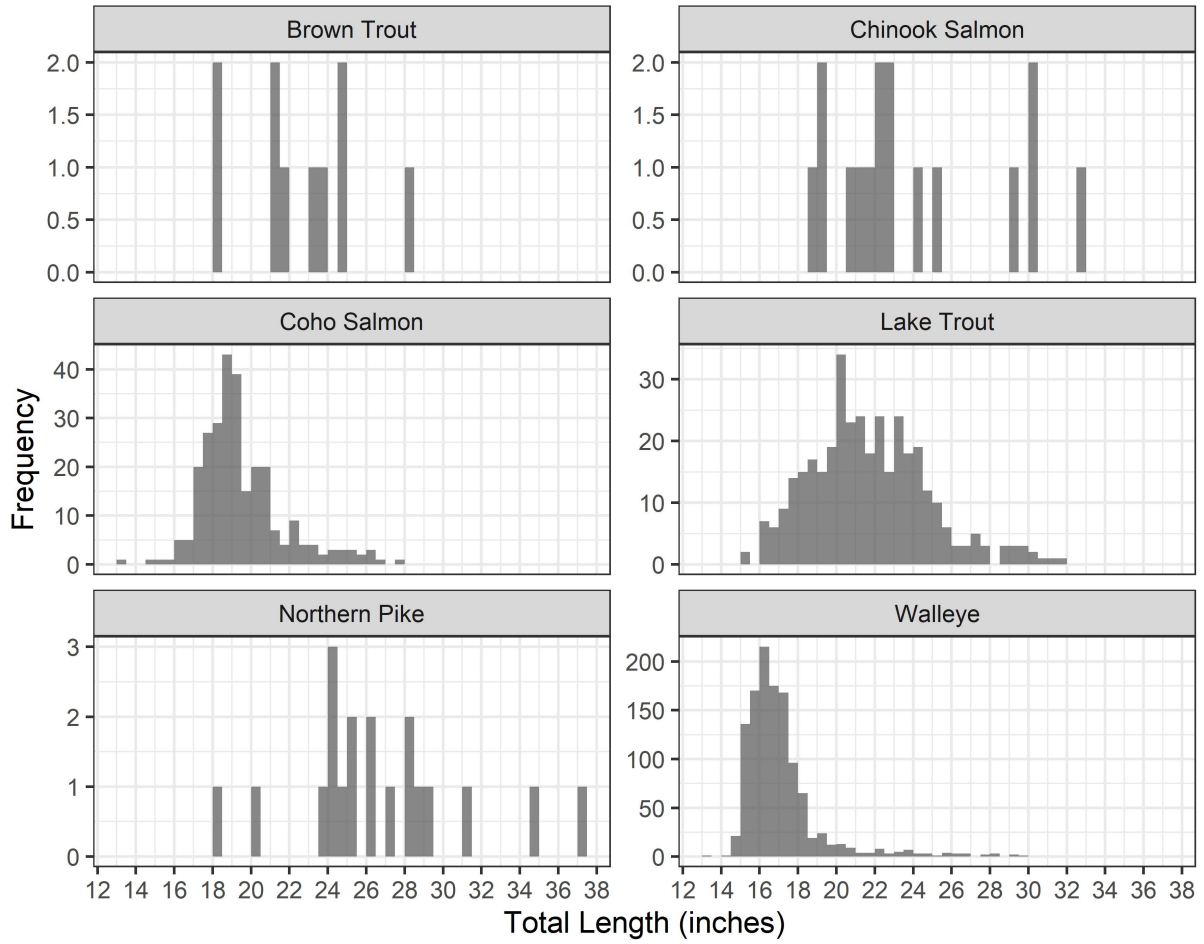


Figure 3. Length distribution of all measured fish (all fisheries) of six common species in the 2023 DNR Lake Superior Creel Survey in management unit WI-1.

# WI-2 Length Frequency 2023

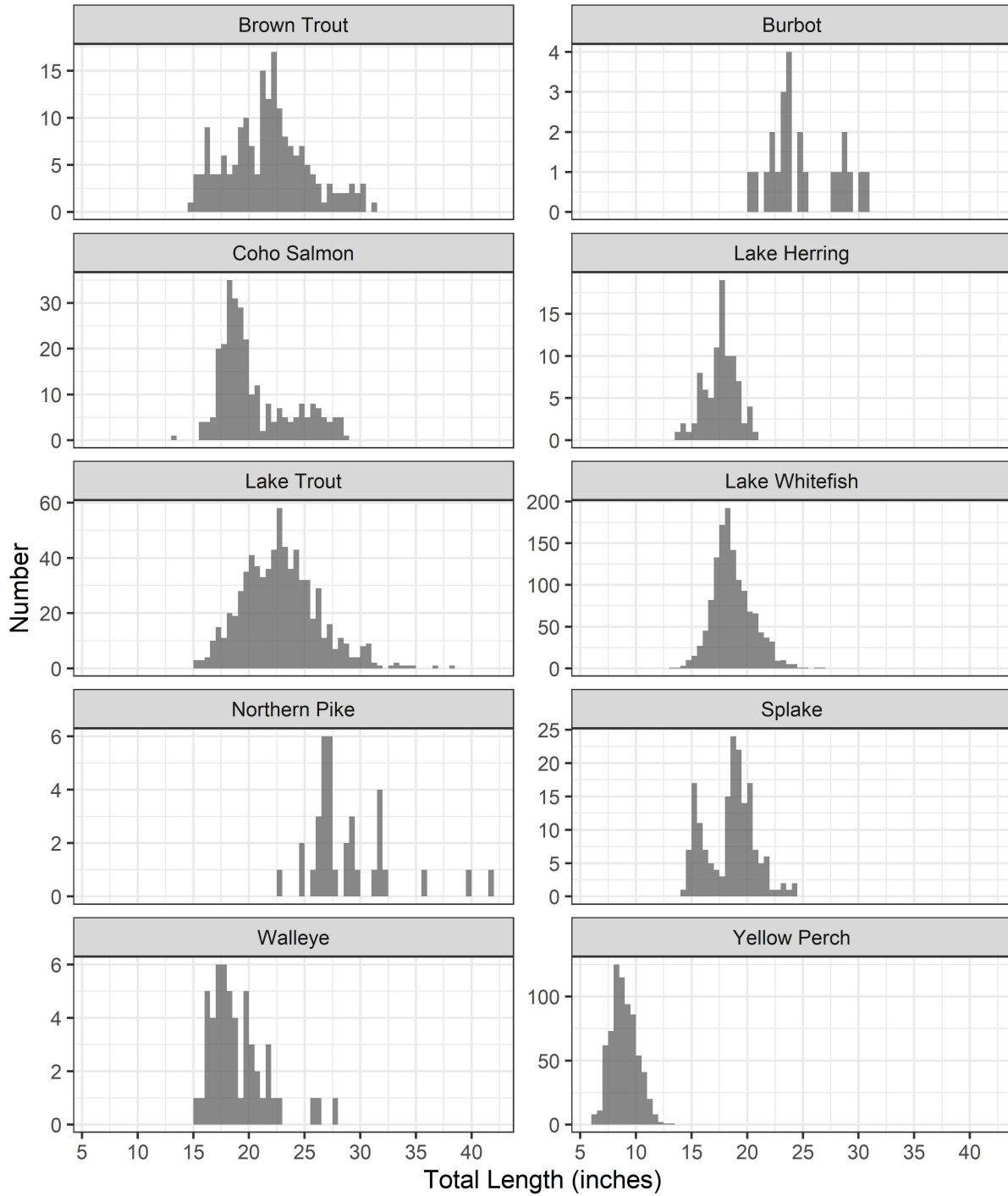


Figure 4. Length distribution of all measured fish (all fisheries) of ten common species in the 2023 DNR Lake Superior Creel Survey in management unit WI-2.

# WI-1 Mean Lengths

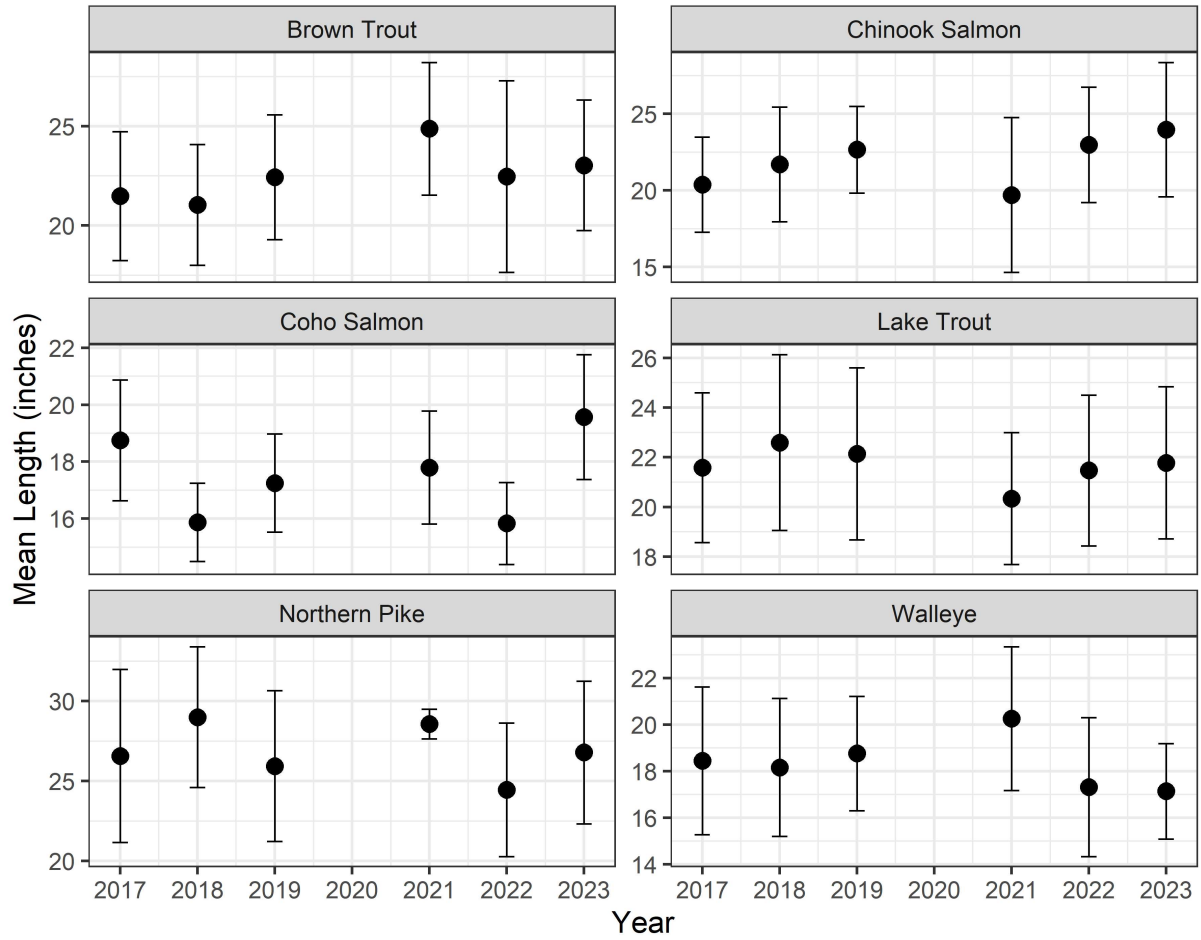


Figure 5. Mean total length of six common species in the DNR Lake Superior Creel Survey in management unit WI-1 from 2017 to 2023. Upper and lower bars represent +/- one standard deviation.

## WI-2 Mean Lengths

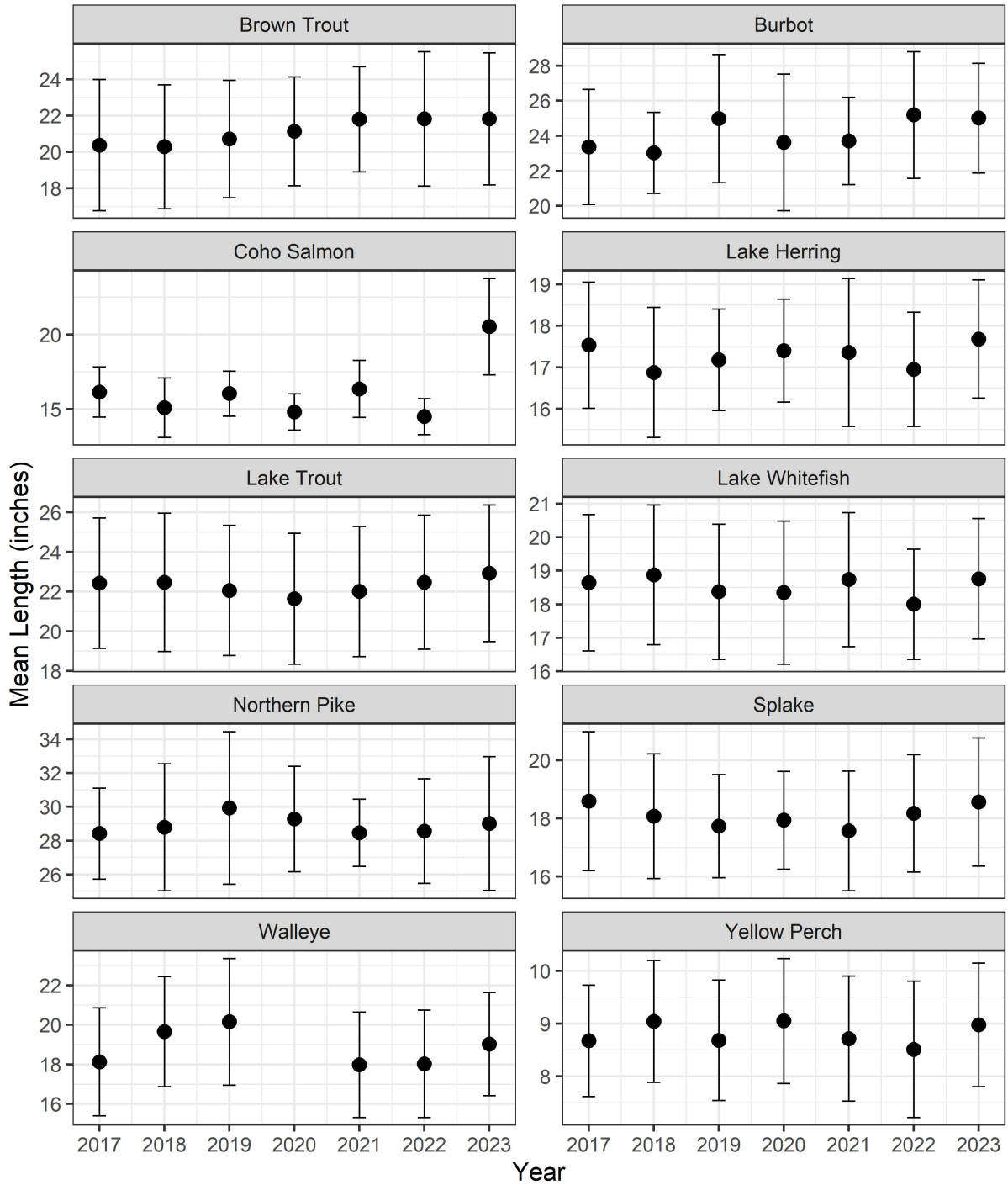


Figure 6. Mean total length of ten common species in the DNR Lake Superior Creel Survey in management unit WI-2 from 2017 to 2023. Upper and lower bars represent +/- one standard deviation.

# WI-1 CREEL STATISTICS TABLES

Table 1. Total estimated effort (angler hours) within each fishery sampled in the DNR Lake Superior Creel Survey in management unit WI-1 from 2017 to 2023. Note: Means do not include 2020 effort in WI-1.

FISHERY	2017	2018	2019	2020	2021	2022	2023	Mean
Open-Water Cold	26,523	32,842	37,739	9,134	35,930	38,110	36,217	<b>34,560</b>
Open-Water Cool	18,792	10,804	22,753	1,391	25,460	26,405	28,501	<b>22,119</b>
Charter	1,056	1,528	3,062	3,900	3,025	1,972	1,328	<b>1,995</b>
Guide						112	154	<b>133</b>
<b>Total</b>	<b>46,371</b>	<b>45,174</b>	<b>63,554</b>	<b>14,425</b>	<b>64,415</b>	<b>66,599</b>	<b>66,200</b>	<b>58,719</b>

Table 2. Total estimated harvest for the most common species (other species represented in "All Fish") in all fisheries sampled in the DNR Lake Superior Creel Survey in management unit WI-1 from 2017 to 2023. Note: Means exclude 2020 effort and harvest.

Year	Effort (hrs)	All Fish	Brown Trout	Chinook Salmon	Coho Salmon	Lake Herring	Lake Trout	Lake Whitefish	Northern Pike	Rainbow Smelt	Rainbow Trout	Siscowet Lake Trout	Splake	Walleye	Yellow Perch
2017	46,371	5,890	216	73	846	4	2,957		77	4	31	229	1	1,239	107
2018	45,174	7,597	306	305	1,736		3,009	3	41		46	228		1,783	22
2019	63,554	12,656	486	555	2,252		4,102	4	87		48	207		4,524	69
2020	14,425	2,245	32	76	214		1,485		16		30	13		378	
2021	64,415	7,001	98	492	861		3,282	1	75		39	157	6	1,749	9
2022	66,599	8,657	201	214	1,076	31	3,265	12	77		9	69		3,586	12
2023	66,200	13,153	146	191	1,959	8	3,238	3	95		29	68		6,921	34
<b>Mean</b>	<b>58,719</b>	<b>9,159</b>	<b>242</b>	<b>305</b>	<b>1,455</b>	<b>7</b>	<b>3,309</b>	<b>4</b>	<b>75</b>	<b>1</b>	<b>34</b>	<b>160</b>	<b>1</b>	<b>3,300</b>	<b>42</b>

Table 3. Harvest rate (fish per angler hour) for the most common species (other species represented in "All Fish") in all fisheries sampled in the DNR Lake Superior Creel Survey in management unit WI-1 from 2017 to 2023. Note: Means exclude 2020 effort and harvest rate.

Year	Effort (hrs)	All Fish	Brown Trout	Chinook Salmon	Coho Salmon	Lake Herring	Lake Trout	Lake Whitefish	Northern Pike	Rainbow Smelt	Rainbow Trout	Siscowet Lake Trout	Splake	Walleye	Yellow Perch
2017	46,371	0.1270	0.0047	0.0016	0.0182	0.0001	0.0638		0.0017	0.0001	0.0007	0.0049		0.0267	0.0023
2018	45,174	0.1682	0.0068	0.0068	0.0384		0.0666	0.0001	0.0009		0.0010	0.0050		0.0395	0.0005
2019	63,554	0.1991	0.0076	0.0087	0.0354		0.0645	0.0001	0.0014		0.0008	0.0033		0.0712	0.0011
2020	14,425	0.1556	0.0022	0.0053	0.0148		0.1029		0.0011		0.0021	0.0009		0.0262	
2021	64,415	0.1087	0.0015	0.0076	0.0134		0.0510		0.0012		0.0006	0.0024	0.0001	0.0272	0.0001
2022	66,599	0.1300	0.0030	0.0032	0.0162	0.0005	0.0490	0.0002	0.0012		0.0001	0.0010		0.0538	0.0002
2023	66,200	0.1987	0.0022	0.0029	0.0296	0.0001	0.0489		0.0014		0.0004	0.0010		0.1045	0.0005
<b>Mean</b>	<b>58,719</b>	<b>0.1553</b>	<b>0.0043</b>	<b>0.0051</b>	<b>0.0252</b>	<b>0.0001</b>	<b>0.0573</b>	<b>0.0001</b>	<b>0.0013</b>		<b>0.0006</b>	<b>0.0029</b>		<b>0.0538</b>	<b>0.0008</b>

Table 4. Total estimated harvest for the most common species (other species represented in "All Fish") in the Open-Water Cold fishery sampled in the DNR Lake Superior Creel Survey in management unit WI-1 from 2017 to 2023. Note: Means exclude 2020 effort and harvest.

Year	Effort (hrs)	All Fish	Brown Trout	Chinook Salmon	Coho Salmon	Lake Trout	Lake Whitefish	Rainbow Trout	Siscowet Lake Trout	Walleye
2017	26,523	4,218	207	54	790	2,746		29	229	143
2018	32,842	5,426	295	292	1,669	2,511	3	44	228	377
2019	37,739	6,904	423	452	2,016	3,319	4	35	203	418
2020	9,134	1,008	22	12	176	723		26	13	22
2021	35,930	4,403	60	407	725	2,593		30	157	390
2022	38,110	4,745	196	194	988	2,834	10	4	69	408
2023	36,217	5,727	141	108	1,815	2,972	3	27	68	539
<b>Mean</b>	<b>34,560</b>	<b>5,237</b>	<b>220</b>	<b>251</b>	<b>1,334</b>	<b>2,829</b>	<b>3</b>	<b>28</b>	<b>159</b>	<b>379</b>

Table 5. Harvest rate (fish per angler hour) of the most common species (other species represented in "All Fish") in the **Open-Water Cold** fishery sampled in the DNR Lake Superior Creel Survey in management unit WI-1 from 2017 to 2023. Note: Means exclude 2020 effort and harvest rate.

Year	Effort (hrs)	All Fish	Brown Trout	Chinook Salmon	Coho Salmon	Lake Trout	Lake Whitefish	Rainbow Trout	Siscowet Lake Trout	Walleye
2017	26,523	0.1590	0.0078	0.0020	0.0298	0.1035		0.0011	0.0086	0.0054
2018	32,842	0.1652	0.0090	0.0089	0.0508	0.0765	0.0001	0.0013	0.0069	0.0115
2019	37,739	0.1829	0.0112	0.0120	0.0534	0.0879	0.0001	0.0009	0.0054	0.0111
2020	9,134	0.1104	0.0024	0.0013	0.0193	0.0792		0.0028	0.0014	0.0024
2021	35,930	0.1225	0.0017	0.0113	0.0202	0.0722		0.0008	0.0044	0.0109
2022	38,110	0.1245	0.0051	0.0051	0.0259	0.0744	0.0003	0.0001	0.0018	0.0107
2023	36,217	0.1581	0.0039	0.0030	0.0501	0.0821	0.0001	0.0007	0.0019	0.0149
<b>Mean</b>	<b>34,560</b>	<b>0.1520</b>	<b>0.0064</b>	<b>0.0070</b>	<b>0.0384</b>	<b>0.0828</b>	<b>0.0001</b>	<b>0.0008</b>	<b>0.0048</b>	<b>0.0107</b>

Table 6. Total estimated harvest for the most common species (other species represented in "All Fish") in the **Open-Water Cool** fishery sampled in the DNR Lake Superior Creel Survey in management unit WI-1 from 2017 to 2023. Note: Means exclude 2020 effort and harvest.

Year	Effort (hrs)	All Fish	Brown Bullhead	Channel Catfish	Coho Salmon	Crappie	Lake Trout	Northern Pike	Rock Bass	Walleye	Yellow Perch
2017	18,792	1,391	8		15	93		69		1,092	107
2018	10,804	1,603		10	7	96	21	36	4	1,395	19
2019	22,753	4,768		47	59	244	202	62		3,998	69
2020	1,391	277					28			249	
2021	25,460	1,855		57	40	156	181	53		1,323	9
2022	26,405	3,342		6	19	85	58	66		3,082	12
2023	28,501	7,016		62	70	315	52	91	22	6,345	34
<b>Mean</b>	<b>22,119</b>	<b>3,329</b>	<b>1</b>	<b>30</b>	<b>35</b>	<b>165</b>	<b>86</b>	<b>63</b>	<b>4</b>	<b>2,872</b>	<b>42</b>

Table 7. Harvest rate (fish per angler hour) of the most common species (other species represented in "All Fish") in the **Open-Water Cool** fishery sampled in the DNR Lake Superior Creel Survey in management unit WI-1 from 2017 to 2023. Note: Means exclude 2020 effort and harvest rate.

Year	Effort (hrs)	All Fish	Brown Bullhead	Channel Catfish	Coho Salmon	Crappie	Lake Trout	Northern Pike	Rock Bass	Walleye	Yellow Perch
2017	18,792	0.0740	0.0004		0.0008	0.0049		0.0037		0.0581	0.0057
2018	10,804	0.1484		0.0009	0.0006	0.0089	0.0019	0.0033	0.0004	0.1291	0.0018
2019	22,753	0.2096		0.0021	0.0026	0.0107	0.0089	0.0027		0.1757	0.0030
2020	1,391	0.1991					0.0201			0.1790	
2021	25,460	0.0729		0.0022	0.0016	0.0061	0.0071	0.0021		0.0520	0.0004
2022	26,405	0.1266		0.0002	0.0007	0.0032	0.0022	0.0025		0.1167	0.0005
2023	28,501	0.2462		0.0022	0.0025	0.0111	0.0018	0.0032	0.0008	0.2226	0.0012
<b>Mean</b>	<b>22,119</b>	<b>0.1463</b>	<b>0.0001</b>	<b>0.0013</b>	<b>0.0015</b>	<b>0.0075</b>	<b>0.0036</b>	<b>0.0029</b>	<b>0.0002</b>	<b>0.1257</b>	<b>0.0021</b>

Table 8. Total estimated harvest for the most common species (other species represented in "All Fish") in the **Charter** fishery from mandatory charter harvest reports in management unit WI-1 from 2017 to 2023.

Year	Effort (hrs)	All Fish	Brown Trout	Chinook Salmon	Coho Salmon	Lake Trout	Lake Whitefish	Rainbow Trout	Splake	Walleye
2017	1,056	281	9	13	41	211		2	1	4
2018	1,528	568	11	6	60	477		2		11
2019	3,062	984	39	65	177	581		13		108
2020	3,900	960	10	64	38	734		4		107
2021	3,025	743	10	76	96	508	1	9	6	36
2022	1,972	542	5	20	69	373	2	5		68
2023	1,328	380	5	76	74	214		2		7
<b>Mean</b>	<b>2,267</b>	<b>637</b>	<b>13</b>	<b>46</b>	<b>79</b>	<b>443</b>		<b>5</b>	<b>1</b>	<b>49</b>

Table 9. Harvest rate (fish per angler hour) of the most common species (other species represented in "All Fish") in the **Charter** fishery from mandatory charter harvest reports in management unit WI-1 from 2017 to 2023.

Year	Effort (hrs)	All Fish	Brown Trout	Chinook Salmon	Coho Salmon	Lake Trout	Lake Whitefish	Rainbow Trout	Splake	Walleye
2017	1,056	0.2661	0.0085	0.0123	0.0388	0.1998		0.0019	0.0009	0.0038
2018	1,528	0.3717	0.0072	0.0039	0.0393	0.3122		0.0013		0.0072
2019	3,062	0.3214	0.0127	0.0212	0.0578	0.1897		0.0042		0.0353
2020	3,900	0.2462	0.0026	0.0164	0.0097	0.1882		0.0010		0.0274
2021	3,025	0.2456	0.0033	0.0251	0.0317	0.1679	0.0003	0.0030	0.0020	0.0119
2022	1,972	0.2748	0.0025	0.0101	0.0350	0.1891	0.0010	0.0025		0.0345
2023	1,328	0.2861	0.0038	0.0572	0.0557	0.1611		0.0015		0.0053
<b>Mean</b>	<b>2,267</b>	<b>0.2874</b>	<b>0.0058</b>	<b>0.0209</b>	<b>0.0383</b>	<b>0.2011</b>	<b>0.0002</b>	<b>0.0022</b>	<b>0.0004</b>	<b>0.0179</b>



Table 10. Total estimated harvest for the most common species in the **Guide** fishery from mandatory guide harvest reports in management unit WI-1 from 2022 to 2023.

Year	Effort (hrs)	All Fish	Northern Pike	Walleye
2022	112	28		28
2023	154	30		30
<b>Mean</b>	<b>133</b>	<b>29</b>		<b>29</b>

Table 11. Harvest rate (fish per angler hour) of the most common species in the **Guide** fishery from mandatory guide harvest reports in management unit WI-1 from 2022 to 2023.

Year	Effort (hrs)	All Fish	Northern Pike	Walleye
2022	112	0.2500		0.2500
2023	154	0.1948		0.1948
<b>Mean</b>	<b>133</b>	<b>0.2224</b>		<b>0.2224</b>

## WI-2 CREEL STATISTICS TABLES

Table 12. Total estimated effort (angler hours) within each fishery sampled in the DNR Lake Superior Creel Survey in management unit WI-2 from 2017 to 2023.

FISHERY	2017	2018	2019	2020	2021	2022	2023	Mean
Dec Open-Water	263	435	1,008	78	1,133	470	159	<b>507</b>
< 60 ft - Shallow	55,415	91,145	68,544	91,278	95,085	84,885	67,458	<b>79,116</b>
> 60 ft - Bobbing	3,728	22,412	11,215	4,419	18,909	28,942	12,632	<b>14,608</b>
Open-Water Cold	95,348	69,507	79,709	98,700	85,202	80,537	78,676	<b>83,954</b>
Open-Water Cool	47,959	44,156	27,083	30,196	27,578	25,515	22,867	<b>32,193</b>
Open-Water Whitefish				4,300	6,612	3,775	7,981	<b>5,667</b>
SMB Only			14,525	19,273	21,878	15,560	18,543	<b>17,956</b>
Charter	5,524	6,964	8,012	8,461	9,383	9,946	10,681	<b>8,424</b>
Guide						5,175	4,212	<b>4,694</b>
<b>Total</b>	<b>208,237</b>	<b>234,619</b>	<b>210,096</b>	<b>256,705</b>	<b>265,780</b>	<b>254,805</b>	<b>223,209</b>	<b>247,119</b>

Table 13. Total estimated harvest for the most common species (other species represented in "All Fish") in all fisheries sampled in the DNR Lake Superior Creel Survey in management unit WI-2 from 2017 to 2023.

Year	Effort (hrs)	All Fish	Brown Trout	Burbot	Chinook Salmon	Coho Salmon	Lake Herring	Lake Trout	Lake Whitefish	Northern Pike	Rainbow Smelt	Rainbow Trout	Siscowet Lake Trout	Splake	Walleye	Yellow Perch
2017	208,237	50,567	3,713	479	55	5,890	391	11,039	7,177	663	4,506	51	98	1,287	2,444	11,809
2018	234,619	60,422	3,934	262	117	4,582	1,058	13,689	13,446	454	5,584	70	138	1,966	1,598	13,107
2019	210,096	53,331	5,036	188	187	7,829	688	11,183	9,917	265	2,012	191	141	2,496	861	12,148
2020	256,705	49,372	4,353	347	85	4,574	900	13,583	9,559	303	3,166	81	46	2,346	1,093	8,969
2021	265,780	63,161	2,780	249	84	9,446	576	12,375	9,748	687	10,744	57	318	3,644	1,675	10,686
2022	254,805	57,737	3,569	1,019	325	7,917	1,028	13,405	12,885	702	3,512	51	337	3,739	1,772	7,457
2023	223,209	50,864	2,555	229	246	4,888	868	11,093	15,211	666	2,615	53	283	2,034	1,837	7,969
<b>Mean</b>	<b>236,207</b>	<b>55,065</b>	<b>3,706</b>	<b>396</b>	<b>157</b>	<b>6,447</b>	<b>787</b>	<b>12,338</b>	<b>11,135</b>	<b>534</b>	<b>4,591</b>	<b>79</b>	<b>194</b>	<b>2,502</b>	<b>1,611</b>	<b>10,306</b>

Table 14. Harvest rate (fish per angler hour) for the most common species (other species represented in "All Fish") in all fisheries sampled in the DNR Lake Superior Creel Survey in management unit WI-2 from 2017 to 2023.

Year	Effort (hrs)	All Fish	Brown Trout	Burbot	Chinook Salmon	Coho Salmon	Lake Herring	Lake Trout	Lake Whitefish	Northern Pike	Rainbow Smelt	Rainbow Trout	Siscowet Lake Trout	Splake	Walleye	Yellow Perch
2017	208,237	0.2428	0.0178	0.0023	0.0003	0.0283	0.0019	0.0530	0.0345	0.0032	0.0216	0.0002	0.0005	0.0062	0.0117	0.0567
2018	234,619	0.2575	0.0168	0.0011	0.0005	0.0195	0.0045	0.0583	0.0573	0.0019	0.0238	0.0003	0.0006	0.0084	0.0068	0.0559
2019	210,096	0.2538	0.0240	0.0009	0.0009	0.0373	0.0033	0.0532	0.0472	0.0013	0.0096	0.0009	0.0007	0.0119	0.0041	0.0578
2020	256,705	0.1923	0.0170	0.0014	0.0003	0.0178	0.0035	0.0529	0.0372	0.0012	0.0123	0.0003	0.0002	0.0091	0.0043	0.0349
2021	265,780	0.2376	0.0105	0.0009	0.0003	0.0355	0.0022	0.0466	0.0367	0.0026	0.0404	0.0002	0.0012	0.0137	0.0063	0.0402
2022	254,805	0.2266	0.0140	0.0040	0.0013	0.0311	0.0040	0.0526	0.0506	0.0028	0.0138	0.0002	0.0013	0.0147	0.0070	0.0293
2023	223,209	0.2279	0.0114	0.0010	0.0011	0.0219	0.0039	0.0497	0.0681	0.0030	0.0117	0.0002	0.0013	0.0091	0.0082	0.0357
<b>Mean</b>	<b>236,207</b>	<b>0.2341</b>	<b>0.0159</b>	<b>0.0017</b>	<b>0.0007</b>	<b>0.0273</b>	<b>0.0033</b>	<b>0.0523</b>	<b>0.0474</b>	<b>0.0023</b>	<b>0.0190</b>	<b>0.0003</b>	<b>0.0008</b>	<b>0.0104</b>	<b>0.0069</b>	<b>0.0444</b>

Table 15. Total estimated harvest for the most common species (other species represented in "All Fish") in the December Open-Water fishery sampled in the DNR Lake Superior Creel Survey in management unit WI-2 from 2017 to 2023.

Year	Effort (hrs)	All Fish	Brown Trout	Coho Salmon	Lake Trout	Lake Whitefish	Rainbow Trout	Splake	Walleye
2017	263	115	50	4	46		4	12	
2018	435	272	65	95	60	11		38	
2019	1,008	437	254	72	7	34	1	63	
2020	78	33	11	8		3		6	
2021	1,133	529	152	254	33			86	2
2022	470	234	17	131	9	3		74	
2023	159	22	16	3				3	
<b>Mean</b>	<b>507</b>	<b>235</b>	<b>81</b>	<b>81</b>	<b>22</b>	<b>7</b>	<b>1</b>	<b>40</b>	

**Table 16. Harvest rate (fish per angler hour) of the most common species (other species represented in "All Fish") in the December Open-Water fishery sampled in the DNR Lake Superior Creel Survey in management unit WI-2 from 2017 to 2023.**

Year	Effort (hrs)	All Fish	Brown Trout	Coho Salmon	Lake Trout	Lake Whitefish	Rainbow Trout	Splake	Walleye
2017	263	0.4373	0.1901	0.0152	0.1749		0.0152	0.0456	
2018	435	0.6253	0.1494	0.2184	0.1379	0.0253		0.0874	
2019	1,008	0.4335	0.2520	0.0714	0.0069	0.0337	0.0010	0.0625	
2020	78	0.4231	0.1410	0.1026		0.0385		0.0769	
2021	1,133	0.4669	0.1342	0.2242	0.0291			0.0759	0.0018
2022	470	0.4979	0.0362	0.2787	0.0191	0.0064		0.1574	
2023	159	0.1384	0.1006	0.0189				0.0189	
<b>Mean</b>	<b>507</b>	<b>0.4318</b>	<b>0.1434</b>	<b>0.1328</b>	<b>0.0526</b>	<b>0.0148</b>	<b>0.0023</b>	<b>0.0749</b>	<b>0.0003</b>

**Table 17. Total estimated harvest for the most common species (other species represented in "All Fish") in the Ice < 60 ft - Shallow fishery sampled in the DNR Lake Superior Creel Survey in management unit WI-2 from 2017 to 2023.**

Year	Effort (hrs)	All Fish	Brown Trout	Burbot	Coho Salmon	Lake Herring	Lake Trout	Lake Whitefish	Northern Pike	Rainbow Smelt	Splake	Walleye	Yellow Perch
2017	55,415	25,306	926	395	1,041	325	302	5,516	177	4,492	757	169	11,087
2018	91,145	33,837	1,980	243	1,772	870	569	8,711	261	5,579	1,459	108	12,106
2019	68,544	21,589	1,359	172	1,044	640	395	3,292	113	2,012	1,664	24	10,740
2020	91,278	24,137	1,986	337	597	835	1,054	6,035	117	3,166	1,796	7	8,251
2021	95,085	34,236	1,143	161	4,275	504	460	3,409	303	10,744	3,026	109	10,092
2022	84,885	27,708	2,036	687	3,230	820	309	7,035	195	3,491	2,877	151	6,817
2023	67,458	16,256	748	166	190	638	124	3,191	198	2,615	1,320	120	6,910
<b>Mean</b>	<b>79,116</b>	<b>26,153</b>	<b>1,454</b>	<b>309</b>	<b>1,736</b>	<b>662</b>	<b>459</b>	<b>5,313</b>	<b>195</b>	<b>4,586</b>	<b>1,843</b>	<b>98</b>	<b>9,429</b>

**Table 18. Harvest rate (fish per angler hour) of the most common species (other species represented in "All Fish") in the Ice < 60 ft - Shallow fishery sampled in the DNR Lake Superior Creel Survey in management unit WI-2 from 2017 to 2023.**

Year	Effort (hrs)	All Fish	Brown Trout	Burbot	Coho Salmon	Lake Herring	Lake Trout	Lake Whitefish	Northern Pike	Rainbow Smelt	Splake	Walleye	Yellow Perch
2017	55,415	0.4567	0.0167	0.0071	0.0188	0.0059	0.0054	0.0995	0.0032	0.0811	0.0137	0.0030	0.2001
2018	91,145	0.3712	0.0217	0.0027	0.0194	0.0095	0.0062	0.0956	0.0029	0.0612	0.0160	0.0012	0.1328
2019	68,544	0.3150	0.0198	0.0025	0.0152	0.0093	0.0058	0.0480	0.0016	0.0294	0.0243	0.0004	0.1567
2020	91,278	0.2644	0.0218	0.0037	0.0065	0.0091	0.0115	0.0661	0.0013	0.0347	0.0197	0.0001	0.0904
2021	95,085	0.3601	0.0120	0.0017	0.0450	0.0053	0.0048	0.0359	0.0032	0.1130	0.0318	0.0011	0.1061
2022	84,885	0.3264	0.0240	0.0081	0.0381	0.0097	0.0036	0.0829	0.0023	0.0411	0.0339	0.0018	0.0803
2023	67,458	0.2410	0.0111	0.0025	0.0028	0.0095	0.0018	0.0473	0.0029	0.0388	0.0196	0.0018	0.1024
<b>Mean</b>	<b>79,116</b>	<b>0.3335</b>	<b>0.0182</b>	<b>0.0040</b>	<b>0.0208</b>	<b>0.0083</b>	<b>0.0056</b>	<b>0.0679</b>	<b>0.0025</b>	<b>0.0570</b>	<b>0.0227</b>	<b>0.0013</b>	<b>0.1241</b>

**Table 19. Total estimated harvest for the most common species (other species represented in "All Fish") in the Ice > 60 ft - Bobbing fishery sampled in the DNR Lake Superior Creel Survey in management unit WI-2 from 2017 to 2023.**

Year	Effort (hrs)	All Fish	Brown Trout	Coho Salmon	Lake Herring	Lake Trout	Lake Whitefish	Siscowet Lake Trout	Splake
2017	3,728	1,544	31	87	52	174	1,074		27
2018	22,412	6,753	46	53	173	1,911	4,425	50	72
2019	11,215	3,199	17	16	42	1,188	1,865	38	12
2020	4,419	809	55	14	39	558	99	4	31
2021	18,909	4,173	83	59	45	1,631	2,191	7	93
2022	28,942	5,549	46	100	92	1,586	3,308	164	47
2023	12,632	5,365	72	15	77	675	4,384	14	44
<b>Mean</b>	<b>14,608</b>	<b>3,913</b>	<b>50</b>	<b>49</b>	<b>74</b>	<b>1,103</b>	<b>2,478</b>	<b>40</b>	<b>47</b>

**Table 20. Harvest rate (fish per angler hour) of the most common species (other species represented in "All Fish") in the Ice > 60 ft - Bobbing fishery sampled in the DNR Lake Superior Creel Survey in management unit WI-2 from 2017 to 2023.**

Year	Effort (hrs)	All Fish	Brown Trout	Coho Salmon	Lake Herring	Lake Trout	Lake Whitefish	Siscowet Lake Trout	Splake
2017	3,728	0.4142	0.0083	0.0233	0.0139	0.0467	0.2881		0.0072
2018	22,412	0.3013	0.0021	0.0024	0.0077	0.0853	0.1974	0.0022	0.0032
2019	11,215	0.2852	0.0015	0.0014	0.0037	0.1059	0.1663	0.0034	0.0011
2020	4,419	0.1831	0.0124	0.0032	0.0088	0.1263	0.0224	0.0009	0.0070
2021	18,909	0.2207	0.0044	0.0031	0.0024	0.0863	0.1159	0.0004	0.0049
2022	28,942	0.1917	0.0016	0.0035	0.0032	0.0548	0.1143	0.0057	0.0016
2023	12,632	0.4247	0.0057	0.0012	0.0061	0.0534	0.3471	0.0011	0.0035
<b>Mean</b>	<b>14,608</b>	<b>0.2887</b>	<b>0.0051</b>	<b>0.0054</b>	<b>0.0065</b>	<b>0.0798</b>	<b>0.1788</b>	<b>0.0020</b>	<b>0.0041</b>

Table 21. Total estimated harvest for the most common species (other species represented in "All Fish") in the **Open-Water Cold** fishery sampled in the DNR Lake Superior Creel Survey in management unit WI-2 from 2017 to 2023.

Year	Effort (hrs)	All Fish	Brown Trout	Chinook Salmon	Coho Salmon	Lake Trout	Lake Whitefish	Rainbow Trout	Siscowet Lake Trout	Splake	Walleye
2017	95,348	17,422	2,439	50	4,476	9,232	587	28	98	461	6
2018	69,507	13,973	1,511	81	2,371	9,230	231	60	83	337	
2019	79,709	21,798	3,015	161	5,798	7,627	3,977	160	94	620	150
2020	98,700	16,028	2,163	73	3,821	9,290	171	59	11	449	4
2021	85,202	14,667	1,155	77	4,398	8,174	5	43	311	367	
2022	80,537	15,111	1,225	308	3,945	8,704	54	42	107	545	54
2023	78,676	14,849	1,450	221	4,310	7,658	137	45	269	503	43
<b>Mean</b>	<b>83,954</b>	<b>16,264</b>	<b>1,851</b>	<b>139</b>	<b>4,160</b>	<b>8,559</b>	<b>737</b>	<b>62</b>	<b>139</b>	<b>469</b>	<b>37</b>

Table 22. Harvest rate (fish per angler hour) of the most common species (other species represented in "All Fish") in the **Open-Water Cold** fishery sampled in the DNR Lake Superior Creel Survey in management unit WI-2 from 2017 to 2023.

Year	Effort (hrs)	All Fish	Brown Trout	Chinook Salmon	Coho Salmon	Lake Trout	Lake Whitefish	Rainbow Trout	Siscowet Lake Trout	Splake	Walleye
2017	95,348	0.1827	0.0256	0.0005	0.0469	0.0968	0.0062	0.0003	0.0010	0.0048	0.0001
2018	69,507	0.2010	0.0217	0.0012	0.0341	0.1328	0.0033	0.0009	0.0012	0.0048	
2019	79,709	0.2735	0.0378	0.0020	0.0727	0.0957	0.0499	0.0020	0.0012	0.0078	0.0019
2020	98,700	0.1624	0.0219	0.0007	0.0387	0.0941	0.0017	0.0006	0.0001	0.0045	
2021	85,202	0.1721	0.0136	0.0009	0.0516	0.0959	0.0001	0.0005	0.0037	0.0043	
2022	80,537	0.1876	0.0152	0.0038	0.0490	0.1081	0.0007	0.0005	0.0013	0.0068	0.0007
2023	78,676	0.1887	0.0184	0.0028	0.0548	0.0973	0.0017	0.0006	0.0034	0.0064	0.0005
<b>Mean</b>	<b>83,954</b>	<b>0.1954</b>	<b>0.0220</b>	<b>0.0017</b>	<b>0.0497</b>	<b>0.1030</b>	<b>0.0091</b>	<b>0.0008</b>	<b>0.0017</b>	<b>0.0056</b>	<b>0.0005</b>

Table 23. Total estimated harvest for the most common species (other species represented in "All Fish") in the **Open-Water Cool** fishery sampled in the DNR Lake Superior Creel Survey in management unit WI-2 from 2017 to 2023.

Year	Effort (hrs)	All Fish	Bluegill	Brown Bullhead	Coho Salmon	Lake Trout	Lake Whitefish	Northern Pike	Rock Bass	Walleye	Yellow Perch
2017	47,959	4,422					476	855	2,269	710	
2018	44,156	2,979	21	144	21	67	139	102	1,488	999	
2019	27,083	2,854		37		749	99		661	1,298	
2020	30,196	2,120	7	48	7	81	133	30	1,073	679	
2021	27,578	2,481				15	286	82	1,535	563	
2022	25,515	2,659			29	19	450	10	1,482	585	
2023	22,867	3,195			34	19	420	82	1,596	936	
<b>Mean</b>	<b>32,193</b>	<b>2,959</b>	<b>4</b>	<b>33</b>	<b>13</b>	<b>136</b>	<b>286</b>	<b>166</b>	<b>1,443</b>	<b>824</b>	

Table 24. Harvest rate (fish per angler hour) of the most common species (other species represented in "All Fish") in the **Open-Water Cool** fishery sampled in the DNR Lake Superior Creel Survey in management unit WI-2 from 2017 to 2023.

Year	Effort (hrs)	All Fish	Bluegill	Brown Bullhead	Coho Salmon	Lake Trout	Lake Whitefish	Northern Pike	Rock Bass	Walleye	Yellow Perch
2017	47,959	0.0922						0.0099	0.0178	0.0473	0.0148
2018	44,156	0.0675	0.0005	0.0033	0.0005		0.0015	0.0031	0.0023	0.0337	0.0226
2019	27,083	0.1054		0.0014			0.0277	0.0037		0.0244	0.0479
2020	30,196	0.0702	0.0002	0.0016	0.0002		0.0027	0.0044	0.0010	0.0355	0.0225
2021	27,578	0.0900					0.0005	0.0104	0.0030	0.0557	0.0204
2022	25,515	0.1042			0.0011		0.0007	0.0176	0.0004	0.0581	0.0229
2023	22,867	0.1397			0.0015		0.0008	0.0184	0.0036	0.0698	0.0409
<b>Mean</b>	<b>32,193</b>	<b>0.0956</b>	<b>0.0001</b>	<b>0.0009</b>	<b>0.0005</b>		<b>0.0048</b>	<b>0.0096</b>	<b>0.0040</b>	<b>0.0464</b>	<b>0.0274</b>

Table 25. Total estimated harvest for the most common species (other species represented in "All Fish") in the **Open-Water Whitefish** fishery sampled in the DNR Lake Superior Creel Survey in management unit WI-2 from 2017 to 2023.

Year	Effort (hrs)	All Fish	Brown Trout	Coho Salmon	Lake Trout	Lake Whitefish	Splake
2020	4,300	3,301			95	3,169	18
2021	6,612	4,212	5		43	4,128	22
2022	3,775	2,259			49	2,159	
2023	7,981	6,641		4		6,571	5
<b>Mean</b>	<b>5,667</b>	<b>4,103</b>	<b>1</b>	<b>1</b>	<b>47</b>	<b>4,007</b>	<b>11</b>

Table 26. Harvest rate (fish per angler hour) of the most common species (other species represented in "All Fish") in the **Open-Water Whitefish** fishery sampled in the DNR Lake Superior Creel Survey in management unit WI-2 from 2017 to 2023.

Year	Effort (hrs)	All Fish	Brown Trout	Coho Salmon	Lake Trout	Lake Whitefish	Splake
2020	4,300	0.7677			0.0221	0.7370	0.0042
2021	6,612	0.6370	0.0008		0.0065	0.6243	0.0033
2022	3,775	0.5984			0.0130	0.5719	
2023	7,981	0.8321		0.0005		0.8233	0.0006
<b>Mean</b>	<b>5,667</b>	<b>0.7088</b>	<b>0.0002</b>	<b>0.0001</b>	<b>0.0104</b>	<b>0.6891</b>	<b>0.0020</b>

Table 27. Total estimated harvest for the most common species (other species represented in "All Fish") in the **Charter** fishery from mandatory charter harvest reports in management unit WI-2 from 2017 to 2023.

Year	Effort (hrs)	All Fish	Brown Trout	Chinook Salmon	Coho Salmon	Lake Trout	Lake Whitefish	Rainbow Trout	Siscowet Lake Trout	Splake	Walleye
2017	5,524	1,758	154	1	282	1,285		4		30	
2018	6,964	2,608	332	19	270	1,919	1	3		60	2
2019	8,012	3,431	381	21	899	1,966		22		137	3
2020	8,461	2,909	131	8	127	2,586	1	5	4	46	1
2021	9,383	2,810	242	7	460	2,034		14		50	1
2022	9,946	3,202	175	17	370	2,534	2	1		99	1
2023	10,681	3,186	221	24	327	2,493		3		98	
<b>Mean</b>	<b>8,424</b>	<b>2,843</b>	<b>234</b>	<b>14</b>	<b>391</b>	<b>2,117</b>	<b>1</b>	<b>7</b>	<b>1</b>	<b>74</b>	<b>1</b>

Table 28. Harvest rate (fish per angler hour) of the most common species (other species represented in "All Fish") in the **Charter** fishery from mandatory charter harvest reports in management unit WI-2 from 2017 to 2023.

Year	Effort (hrs)	All Fish	Brown Trout	Chinook Salmon	Coho Salmon	Lake Trout	Lake Whitefish	Rainbow Trout	Siscowet Lake Trout	Splake	Walleye
2017	5,524	0.3182	0.0279	0.0002	0.0510	0.2326		0.0007		0.0054	
2018	6,964	0.3745	0.0477	0.0027	0.0388	0.2756	0.0001	0.0004		0.0086	0.0003
2019	8,012	0.4282	0.0476	0.0026	0.1122	0.2454		0.0027		0.0171	0.0004
2020	8,461	0.3438	0.0155	0.0009	0.0150	0.3056	0.0001	0.0006	0.0005	0.0054	0.0001
2021	9,383	0.2995	0.0258	0.0007	0.0490	0.2168		0.0015		0.0053	0.0001
2022	9,946	0.3219	0.0176	0.0017	0.0372	0.2548	0.0002	0.0001		0.0100	0.0001
2023	10,681	0.2983	0.0207	0.0022	0.0306	0.2334		0.0003		0.0092	
<b>Mean</b>	<b>8,424</b>	<b>0.3406</b>	<b>0.0290</b>	<b>0.0016</b>	<b>0.0477</b>	<b>0.2520</b>	<b>0.0001</b>	<b>0.0009</b>	<b>0.0001</b>	<b>0.0087</b>	<b>0.0001</b>

Table 29. Total estimated harvest for the most common species in the **Guide** fishery from mandatory guide harvest reports in management unit WI-2 from 2022 to 2023.

Year	Effort (hrs)	All Fish	Brown Trout	Burbot	Chinook Salmon	Coho Salmon	Lake Herring	Lake Trout	Lake Whitefish	Northern Pike	Rainbow Smelt	Rainbow Trout	Siscowet Lake Trout	Splake	Walleye	Yellow Perch
2022	5,175	988	70	66		112	21	214	305	8			6	97	57	31
2023	4,212	1,262	41	23	1	5	19	143	909	10		1		54	19	37
<b>Mean</b>	<b>4,694</b>	<b>1,125</b>	<b>56</b>	<b>44</b>		<b>58</b>	<b>20</b>	<b>178</b>	<b>607</b>	<b>9</b>			<b>3</b>	<b>76</b>	<b>38</b>	<b>34</b>

Table 30. Harvest rate (fish per angler hour) of the most common species in the **Guide** fishery from mandatory guide harvest reports in management unit WI-2 from 2022 to 2023.

Year	Effort (hrs)	All Fish	Brown Trout	Burbot	Chinook Salmon	Coho Salmon	Lake Herring	Lake Trout	Lake Whitefish	Northern Pike	Rainbow Smelt	Rainbow Trout	Siscowet Lake Trout	Splake	Walleye	Yellow Perch
2022	5,175	0.1909	0.0135	0.0128		0.0216	0.0041	0.0414	0.0589	0.0015			0.0012	0.0187	0.0110	0.0060
2023	4,212	0.2996	0.0097	0.0055	0.0002	0.0012	0.0045	0.0340	0.2158	0.0024		0.0002		0.0128	0.0045	0.0088
<b>Mean</b>	<b>4,694</b>	<b>0.2452</b>	<b>0.0116</b>	<b>0.0092</b>	<b>0.0001</b>	<b>0.0114</b>	<b>0.0043</b>	<b>0.0377</b>	<b>0.1374</b>	<b>0.0019</b>		<b>0.0001</b>	<b>0.0006</b>	<b>0.0158</b>	<b>0.0078</b>	<b>0.0074</b>