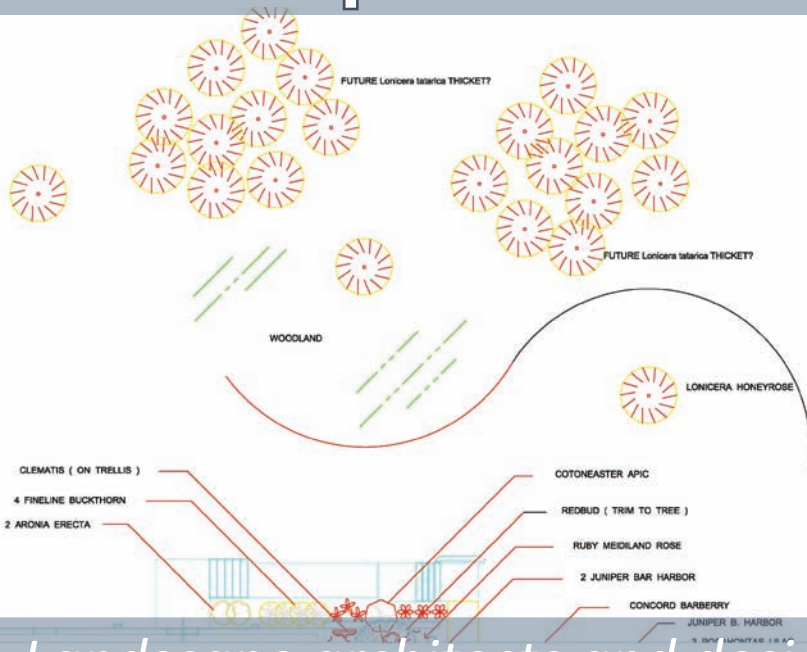


# Landscapes at Risk from Invasive Species



**INVASIVE SPECIES** are taking over our urban landscapes compromising designs, as well as greatly affecting aesthetics.

*Landscape architects and designers play a critical role in slowing the spread of invasive species.*

## WHAT LANDSCAPE ARCHITECTS AND DESIGNERS NEED TO KNOW ABOUT INVASIVES

- Invasive species are those nonnative plants, animals, and diseases that can cause harm to the economy, environment, and human health.
- Most introduced plants do not cause problems; however, those that do have significant economic and environmental costs.
- Invasive species pose a threat to Wisconsin's landscapes which provide important environmental, social, and economic values such as reduced storm water run-off, improved air quality, energy conservation, improved public health, and increased property value.
- Invasive plants reproduce and grow quickly, easily invading adjacent natural areas, woodlands, and even landscaped areas.
- Invasive insects and diseases weaken and sometimes kill trees.

## WHAT DOES THIS HAVE TO DO WITH LA'S AND DESIGNERS?

- Invasive plants are frequently used in designs.
- Invasive propagules, insects, and diseases can be moved by people, landscaping materials, and equipment.
- Invasive species displace, weaken, or kill desirable plants resulting in loss of diversity; degrade wildlife habitat; interfere with recreational activities; disrupt urban ecosystems; and divert millions of dollars for their control.
- Once installed, your designs may be impacted by invasive species.

## WHAT YOU CAN DO

- Take an assessment prior to site design and make recommendations for management.
- Do not include invasive cultivars in planting designs.
- Design using plant materials that are site appropriate and less susceptible to damaging pests and diseases.
- Enhance the establishment of healthy plants through design.
- Diversify planting material within the context of your design.
- Design with long-term management and maintenance in mind.
- Keep current about invasive species and educate clients.
- Write specifications to limit the introduction and spread of invasive species.