

How to Allow Pop-ups in Google Chrome Browser And Opening PDFs

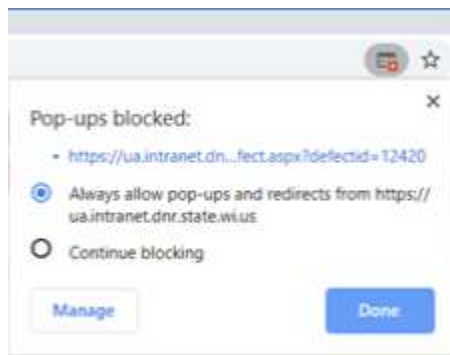
Two ways to allow pop-ups for WisFIRS in Google Chrome:

First Method: Responding to the alert

1. When you try to open a feature that launches a pop-up, Chrome may display an alert in the top right top corner of the browser.



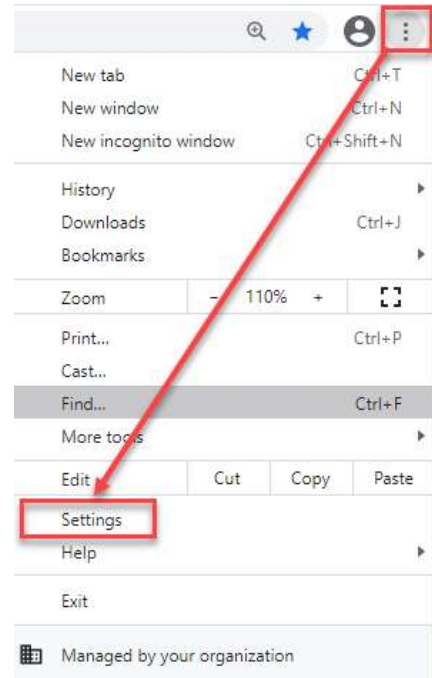
2. Click on the alert. The alert notes that the pop-up was blocked. Select “Always allow...” and “Done.”



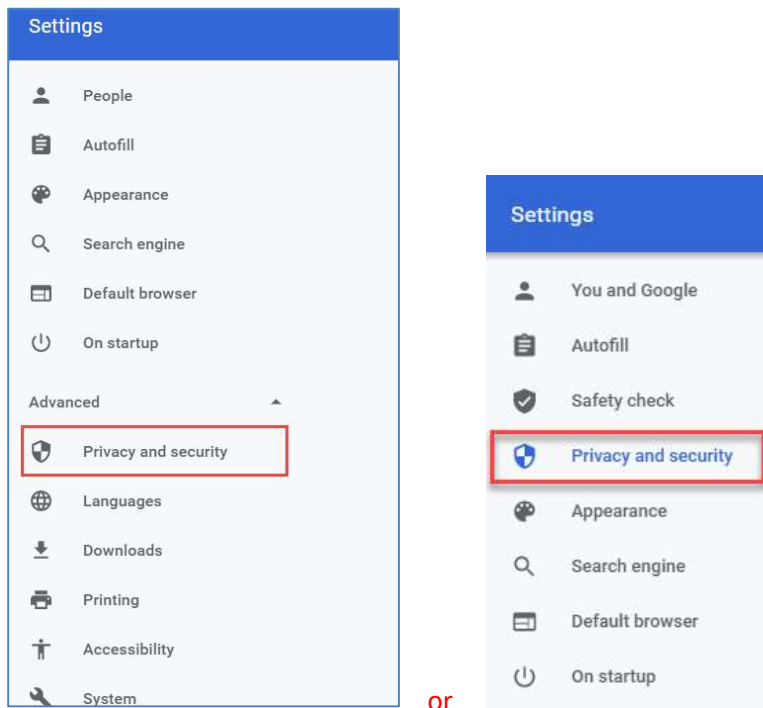
Close all Chrome browser windows and reopen WisFIRS in a new Chrome window.

Second Method: Customizing Google Chrome

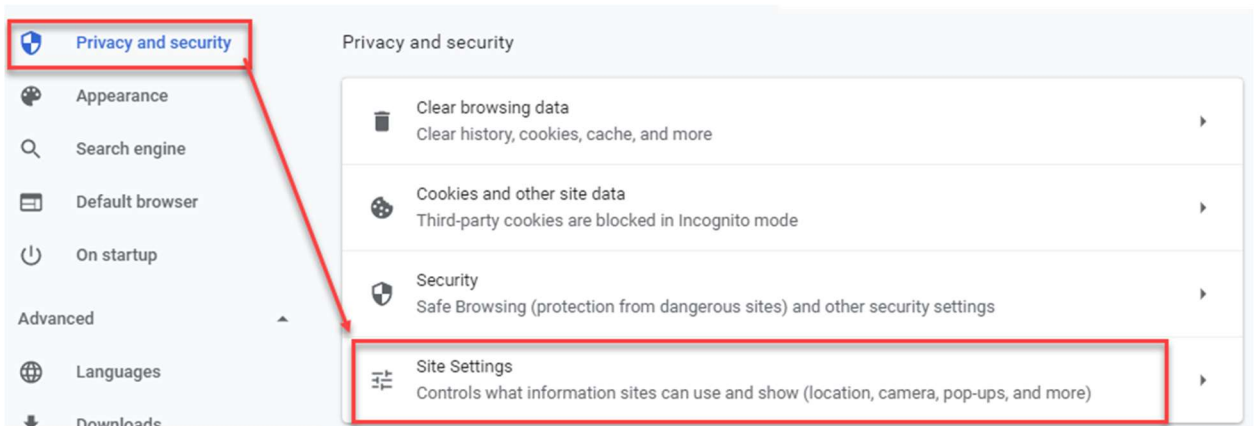
1. Open the Google Chrome browser.
2. Go to Customize Google Chrome by selecting the ellipsis (3 vertical dots) in the top right of the browser. Then Choose "Settings."



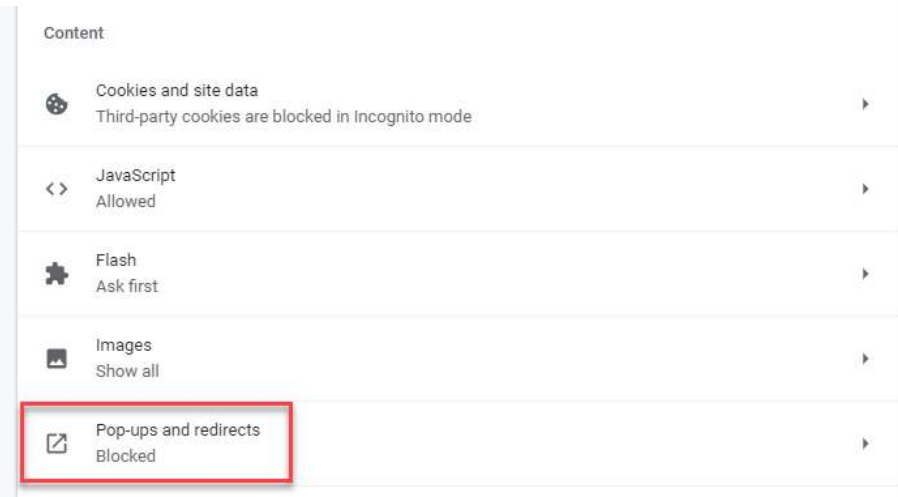
3. Depending on your version, either go to Advanced and then “Privacy and Security.” Or, in Google Chrome 87.x, go directly to “Privacy and Security.”



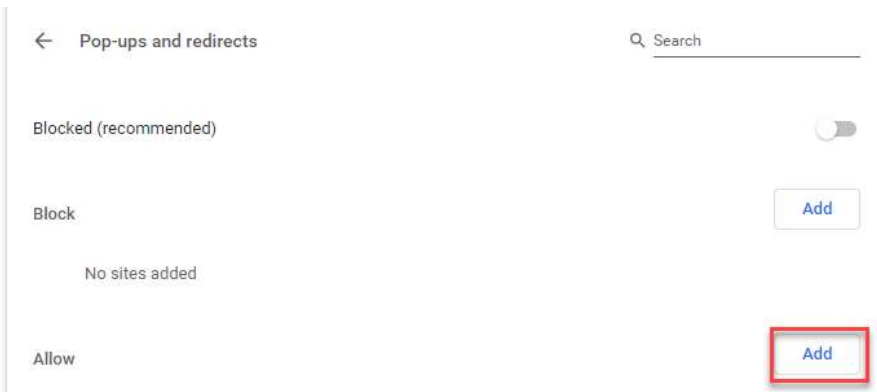
4. Select “Site Settings”



5. Scroll down to “Content” and then “Pop-ups and redirects.”



6. In the “Allow” section, click the “Add” button.



7. Internal Users (DNR): Enter the following addresses in the textbox:

- a. Add both <http://intranetapps.dnr.wi.gov/wisfirpublic/wisfirs.aspx> and <https://intranetapps.dnr.wi.gov/wisfirpublic/wisfirs.aspx>
- b. If you are a potential WisFIRS tester, also add both <http://uatintranetapps.dnr.wi.gov/wisfirpublic/wisfirs.aspx> and <https://uatintranetapps.dnr.wi.gov/wisfirpublic/wisfirs.aspx>

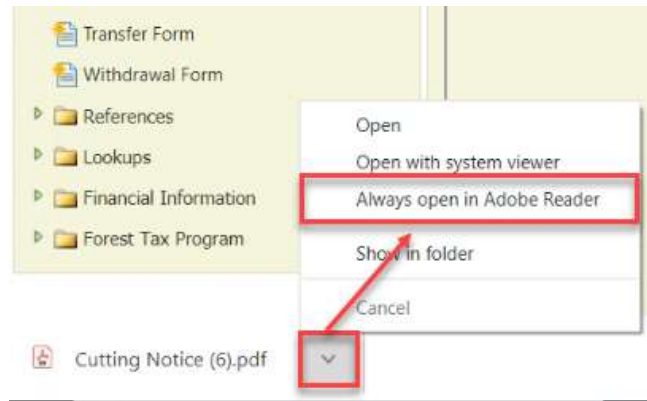
External Users: Enter the following addresses in the textbox:

- c. Add both <http://dnrx.wisconsin.gov/wisfirpublic/wisfirs.aspx> and <https://dnrx.wisconsin.gov/wisfirpublic/wisfirs.aspx>



Opening PDFs:

In addition, PDF files will download in Chrome just like any other file. In the bottom left of the window, select the arrow on the download. Then choose the "Always open in Adobe Reader." This option which will open the file in a separate Adobe Reader window.



Close all Chrome browser windows and reopen WisFIRS in a new Chrome window.

If you are experiencing problems with WisFIRS, Report a Defect:

In the upper right corner of the WisFIRS application, click on "Report a Defect."



Or, contact the DNRForestryTechSupport.