



DNR WAREHOUSE FFP GRANT CATALOG

5-2024

Our warehouse services DNR personnel, government agencies, and cooperating non-profit organizations all across the state of Wisconsin.



E-mail: DNRFRStockroom@wisconsin.gov

Phone: 715-453-1257

Fax: 715-453-5998

DEADLINE TO ORDER FROM STOCKROOM FOR THE FFP GRANT IS MARCH 15TH. ORDERS WILL NOT BE ACCEPTED BY THE STOCKROOM AFTER THIS DATE.

PRICES SUBJECT TO CHANGE

Visit us on the web at: <http://dnr.wi.gov/topic/forestfire/catalog.html>

IMPORTANT INFORMATION

DEADLINE TO ORDER FROM THE FORESTRY EQUIPMENT STOCKROOM IS MARCH 15TH.

- Complete the Order Form. Be sure to check the “GRANT RELATED ORDER” box, Either the “SHIP” or “PICK UP” box, add any other information regarding your order in the “COMMENTS” box – and submit via E-mail, Fax, or Mail.
- You will not be invoiced for items until they are shipped or picked up.
- Orders for “pick up” will only be held for 15 days. If you haven’t made arrangements to pick up your within that time, we will ship it at your expense.
- **DO NOT send checks to the Forestry Equipment Stockroom.** Once your order is completed you will receive an invoice in the mail. The invoice has instructions on where to mail the check.
- To insure delivery of items in time to complete the grant process, please submit your order as soon as possible. This may give us time to replenish stock if an item sells out.

Order Form

A copy of the order form can be found online by clicking the order form in the back of this catalog. It can also be found online at:

<https://dnr.wisconsin.gov/sites/default/files/topic/ForestFire/OrderForm.pdf>

For the order form to work, you must save/download it to your computer, then open it with Acrobat Reader before filling it in. **If you use a browser PDF reader to complete it, the form will not work properly.** We recommend you save a copy after you complete the form, then email a copy of the completed form to DNRFRStockroom@wisconsin.gov.

Links

FFP Grant Program Main Page

<https://dnr.wi.gov/Aid/ForestFireProtection.html>

FFP Grant Contacts

[Sandy Flesher \(Chancellor\)](#)

[Ron Schneider](#)

Grant Manager
608-266-1967

Cooperative Forest Ranger
608-438-6528

Returns

When returning any part of your order, please contact our Stockroom 1-715-453-1257 or DNRFRStockroom@wisconsin.gov FIRST and include your LeMay order# and the specifics of your situation. If you will be returning a package you can print out and fill in the [LeMay Warranty/Return Form](#) located in the back of this catalog. Enclose the form in the package. Carefully repackage the merchandise using the original packing material if possible, to prevent damage in transit. All items that are returned should be in the same condition as when delivered.

Catalog Errors

Due to the wide selection of products being offered, there may be occasional errors found in the catalog. We reserve the right to make corrections in the event of a misprint or change.

CONTENTS

<u>BACKPACK PUMPS & PARTS</u>	<u>4</u>
<u>BACKFIRING EQUIPMENT</u>	<u>4</u>
<u>FIRE FIGHTING HANDTOOLS</u>	<u>5</u>
<u>FIRE RESISTANT CLOTHING</u>	<u>6-9</u>
<u>SAFETY</u>	<u>10-14</u>
<u>PACKS & COMPONENTS</u>	<u>15-16</u>
<u>HOSE, FITTINGS & ACCESSORIES</u>	<u>17-21</u>
<u>PUMPS</u>	<u>22-23</u>
<u>FOAM UNITS & ACCESSORIES</u>	<u>24-25</u>
<u>HOSE REELS</u>	<u>26</u>
<u>WINCHES & ACCESSORIES</u>	<u>26</u>
<u>SIGNS & PARTS</u>	<u>27</u>
<u>DECALS</u>	<u>27</u>
<u>FLAGS & BANNERS</u>	<u>28</u>



BACKPACK PUMPS & PARTS



Backcan, Complete

Five-gallon tank features baffle, outlet with filter screen at bottom, 1" recessed bottom, and ventilated back rest. Slide action pump is operated by hand. Gasketed cam lock tank cap features a ventilation hole to prevent tank collapse, and is secured to the tank by a 4" beaded chain. Combination nozzle allows quick change from spray to straight stream. Single-braided, flexible, oil-resistant hose, 1/2" I.D., 30" long. Carrying handle has clips for securing pump and holes for attaching removable, 1-3/4" heavy-duty polypropylene shoulder straps. One strap has clip for attaching pump to your chest. Net Weight: 12 lbs., 5 oz.

Part # 340-36-10-9000 \$172.70

Collapsible Backpack Pump, Complete

5 Gallon Heavy Duty Vinyl bag - rolls up to fit in small areas when not in use. Shoulder Harness Straps offer the best in comfort with center cinch strap that distributes weight efficiently and comfortably. Seams are electronically sealed and reinforced at all stress points. Dual Nozzle changes quickly from stream to spray without tools.

Part # 340-36-20-1001 \$135.20



BACKFIRING EQUIPMENT



Fusee

For starting backfires, this device features positive-ignition action similar to highway flares. Burns for 10 minutes. Forest Service Spec 5100-360.

Part # 340-04-20-0105 \$3.75

Drip Torch

Constructed from 15 gauge seamless aluminum with a rugged forged aluminum bottom to prevent wear and punctures. The spout is reversible for storage. A breathing tube with a shut-off prevents fuel leaks when in the storage mode. Parts are interchangeable with most other drip torches. 1.25 gal capacity.

Part # 340-04-10-1000 \$146.51



Bracket, Drip Torch

Truck mount bracket is designed to keep drip torch in an upright position. It is made from rust resistant zinc plated material.

Part # 340-06-05-1001 \$70.35



FIRE FIGHTING HANDTOOLS

Fire Shovel

Designed especially for fighting wildland fires. Features a solid shank and a straight 34" handle. Forest Service Spec 5100-326.

Part # 340-40-30-0171 \$74.61



Fire Rake

Council or Rich tool is designed for fire-line digging. Features triangular cutting heads on a 12"-wide hoe-type frame. Consists of four mowing machine cutter blades riveted to a steel frame. Straight handle is 52" long. Forest Service Spec 5100-284

Part # 340-40-20-1807 \$45.25

Pulaski Tool

This ax-and-hoe combination tool is designed for fire-line digging and chopping. Cutting edges: 3-3/8" (hoe); 4-1/2" (ax); handle 36" long. Forest Service Spec 5100-355.

Part # 340-40-10-0146 \$72.68



Fire Swat

A valuable tool when trying to suppress grass and grain fires, range fires, or for mop up work following water equipment. Constructed of heavy rubber made from treated belting, the fire flap features a large 15" flap, with a 60" handle. Overall length is 75". Weight is 5.5 lbs.

Part # 340-40-40-1005 \$56.24

McLead Tool

Fire-line digging tool is a rake-and-hoe combination. Handle is 48" long. Forest Service Spec 5100-353.

Part # 340-40-20-0296 \$68.50



Combo Tool

Combination pick and shovel can be folded for easy transport. Similar to an army entrenching tool and features a 41" handle and serrations on shovel edges for cutting light brush. Intended for use on wildland fire-lines and for general forest work and trail maintenance. Forest Service Spec 5100-325.

Part # 340-40-40-1108 \$81.32

FIRE RESISTANT CLOTHING

Fire Resistant Coveralls

UL® classified to meet or exceed NFPA* protective clothing requirements for Wildland Fire. Pleated back expands for easy maneuverability. Reinforced elastic waistband provides a comfortable fit. Contoured deep front pockets' special pass-through design allows access to trousers. Full length front zipper opens from top or bottom. Extra reinforced crotch seam. Front fly cover protects and secures the front zipper. Reflective trim at ankles, forearms, across shoulders and pockets.



Chest Sizes:
 Small (34-36)
 Medium (38-40)
 Large (42-44)
 X-Large (46-48)
 2X-Large (50-52)
 3X-Large (54-56)

Length:
 Regular— 5'8" to 6'
 Tall—6'1" to 6'4"

Size	Part #	Price
Small	514-03-02-1005	\$220.86
Medium	514-03-02-2005	\$220.86
Medium Tall	514-03-02-2010	\$220.86
Large	514-03-02-3005	\$220.86
Large Tall	514-03-02-3010	\$220.86
X-Large	514-03-02-4005	\$220.86
X-Large Tall	514-03-02-4010	\$220.86
2X-Large	514-03-02-5005	\$242.95
2X-Large Tall	514-03-02-5010	\$242.95
3X-Large	514-03-02-6005	\$267.25
3X-Large Tall	514-03-02-6010	\$267.25

THIS ITEM IS BEING DISCONTINUED—LIMITED AVAILABILITY



Fire Resistant Coat, FD

Meets NFPA 1977, current edition, standard for wildland fire fighting protective clothing and UL classified. These brush coats feature large breast pockets, two large hip pockets with full flap closures, roomy raglan style sleeves, a turnout style collar with self-storing throat strap, and adjustable hook and loop cuff closures. 2" reflective stripe at waist, forearm and upper back. **ALL BRUSH COATS COME WITH A LINER**

Fire Resistant Coat Liner

6.5oz. Cotton liner buttons into our fire resistant coats for added warmth.

Chest Sizes:
 Small (34-36)
 Medium (38-40)
 Large (42-44)
 X-Large (46-48)
 2X-Large (50-52)
 3X-Large (54-56)

Size	FD Coat	
Small	513-23-10-1005	\$226.22
Medium	513-23-10-2005	\$226.22
Medium Tall	513-23-10-2010	\$226.22
Large	513-23-10-3005	\$226.22
Large Tall	513-23-10-3010	\$226.22
X-Large		
X-Large Tall	513-23-10-4010	\$226.22
2X-Large	513-23-10-5005	\$248.84
2X-Large Tall	513-23-10-5010	\$248.84
3X-Large	513-23-10-6005	\$271.46
3X-Large Tall	513-23-10-6010	\$271.46

FIRE RESISTANT CLOTHING

Fire Resistant Pants

All of our fire resistant pants are manufactured to include BDU style, elastic waist, adjustable hook & loop cinch straps at ankles, two front, two cargo & two rear pockets. Includes 2" reflective stripe at ankles and 1" on pockets.

Waist Sizes	
Small 27"-30"	Medium 31"-34"
Large 35"-38"	X-Large 39"-42"
2X-Large 43"-46"	3X-Large 47"-50"
INSEAM: S-28" L/T-32" XL/XT-34"	

FR Pants, Advance

7.0 oz "Advance" 60% Kevlar/40% Nomex IIIA.

FR Pants, Tecasafe

9.0 oz Tecasafe material.

FR Overpants, Indura **THIS ITEM IS BEING DISCONTINUED—LIMITED AVAILABILITY**



Size	Advance		Tecasafe		Overpants	
Small x 28	511-33-14-1000	\$296.00	511-33-16-1000	\$193.10	511-33-15-1000	\$206.00
Small x 31	511-33-14-1005	\$296.00	511-33-16-1005	\$193.10	511-33-15-1005	\$206.00
Medium x 28	511-33-14-2000	\$296.00	511-33-16-2000	\$193.10	511-33-15-2000	\$206.00
Medium x 31	511-33-14-2005	\$296.00	511-33-16-2005	\$193.10	511-33-15-2005	\$206.00
Medium x 34	511-33-14-2010	\$296.00	511-33-16-2010	\$193.10	511-33-15-2010	\$206.00
Large x 28	511-33-14-3000	\$296.00	511-33-16-3000	\$193.10	511-33-15-3000	\$206.00
Large x 31	511-33-14-3005	\$296.00	511-33-16-3005	\$193.10		
Large x 34	511-33-14-3010	\$296.00	511-33-16-3010	\$193.10	511-33-15-3010	\$206.00
X-Large x 28	511-33-14-4000	\$296.00	511-33-16-4000	\$193.10	511-33-15-4000	\$206.00
X-Large x 31	511-33-14-4005	\$296.00	511-33-16-4005	\$193.10		
X-Large x 34	511-33-14-4010	\$296.00	511-33-16-4010	\$193.10	511-33-15-4010	\$206.00
2X-Large x 28	511-33-14-5000	\$325.60	511-33-16-5000	\$212.41	511-33-15-5000	\$193.64
2X-Large x 31	511-33-14-5005	\$325.60	511-33-16-5005	\$212.41	511-33-15-5005	\$193.64
2X-Large x 34	511-33-14-5010	\$325.60	511-33-16-5010	\$212.41		
3X-Large x 31	511-33-14-6005	\$328.44	511-33-16-6005	\$214.22	511-33-15-6005	\$211.06
3X-Large x 34	511-33-14-6010	\$328.44	511-33-16-6010	\$214.22	511-33-15-6010	\$211.06

FIRE RESISTANT CLOTHING

Size	Part #	Price
Small	512-33-23-1005	\$99.73
Medium	512-33-23-2005	\$99.73
Medium Tall	512-33-23-2010	\$99.73
Large	512-33-23-3005	\$99.73
Large Tall	512-33-23-3010	\$99.73
X-Large	512-33-23-4005	\$99.73
X-Large Tall	512-33-23-4010	\$99.73
2X-Large	512-33-23-5005	\$109.70
2X-Large Tall	512-33-23-5010	\$109.70
3X-Large	512-33-23-6005	\$120.67
3X-Large Tall	512-33-23-6010	\$120.67

Fire Resistant Shirt

Fire resistant shirt is designed for use by wildland firefighters. It is single-breasted with a button front, rolled collar, and straight cut bottom. The shirt has two flap closing breast pockets and hook & pile fasteners for pockets and cuffs.



Chest Sizes:
 Small (34-36)
 Medium (38-40)
 Large (42-44)
 X-Large (46-48)
 2X-Large (50-52)
 3X-Large (54-56)

Fire Resistant Pants, Women's

Our women's pants are available by special order in response to the needs of women firefighters. Designed to comfortably fit the female figure, yet rugged enough to meet the demands of wildland firefighting. Made to all the same high quality standards and specifications as our regular fire resistant pants, our women's pants feature a smaller rise and less "bulk," allowing you to move freely on the fireline. Made of 7.5 oz NOMEX® in Green and have the same reflective striping as our other fire resistant pants.



Size	Advance		Nomex/Tecasafe	
6P	511-33-13-0600	\$360.00	511-33-12-0600	\$275.00
6R	511-33-13-0605	\$360.00	511-33-12-0605	\$275.00
6L	511-33-13-0610	\$360.00	511-33-12-0610	\$275.00
8P	511-33-13-0800	\$360.00	511-33-12-0800	\$275.00
8R	511-33-13-0805	\$360.00	511-33-12-0805	\$275.00
8L	511-33-13-0810	\$360.00	511-33-12-0810	\$275.00
10P	511-33-13-1000	\$360.00	511-33-12-1000	\$275.00
10R	511-33-13-1005	\$360.00	511-33-12-1005	\$275.00
10L	511-33-13-1010	\$360.00	511-33-12-1010	\$275.00
12P	511-33-13-1200	\$360.00	511-33-12-1200	\$275.00
12R	511-33-13-1205	\$360.00	511-33-12-1205	\$275.00
12L	511-33-13-1210	\$360.00	511-33-12-1210	\$275.00
14P	511-33-13-1400	\$360.00	511-33-12-1400	\$275.00
14R	511-33-13-1405	\$360.00	511-33-12-1405	\$275.00
14L	511-33-13-1410	\$360.00	511-33-12-1410	\$275.00
16P	511-33-13-1600	\$360.00	511-33-12-1600	\$275.00
16R	511-33-13-1605	\$360.00	511-33-12-1605	\$275.00
16L	511-33-13-1610	\$360.00	511-33-12-1610	\$275.00
18P	511-33-13-1800	\$360.00	511-33-12-1800	\$275.00
18R	511-33-13-1805	\$360.00	511-33-12-1805	\$275.00
18L	511-33-13-1810	\$360.00	511-33-12-1810	\$275.00

FIRE RESISTANT CLOTHING



Fire Resistant Hood, Carbon Shield

Only state-of-the-art flame-resistant fabrics are used assuring permanent flame and heat protection even after years of use and repeated laundering. Longer front and back drape design makes sure the hood stays tucked in even during the most strenuous activity. Other features include flat stitching and seamless chin area for better fit and comfort, 1/2"W elastic face opening which stretches to a full 17" for easy donning and a snug fit, and bottom edge is bound with self-fabric bias binding. For additional peace of mind these hoods (construction and fabrics) are UL classified to meet or exceed the NFPA 1971 Standard on Protective Ensemble for Structural Fire Fighting 2000 Edition.

Part # 345-72-10-1003 \$23.21

Fire Resistant Neck Protector

Full Nomex®, unlined, ear, neck and face protector. Constructed from yellow 7.5 oz Nomex® IIIA for optimal protection. Pressure-sensitive hook and loop tabs allow easy installation in any wildland helmet. Nomex® thread used throughout.

Part # 345-72-10-1004 \$20.86



Hot Shield Facemask

The Hot Shield Model HS-2 Wildland Firefighter Face Mask is a patented, highly flame resistant face protector designed by firefighters for use in all wildland firefighting operations. The HS-2 offers the extreme protection against burns to the face/neck with the added benefit of blocking and reducing the inhalation of smoke & ash particulate.

Filter: N95 with exhalation valve.

Limitations: This type of filter doesn't block fire gases, like carbon monoxide, so don't assume you can advance further into the fire. Use your head, training and common sense. Throw it away and replace with a new one when filter becomes difficult to breathe through or becomes damaged.

Facemask 345-72-10-1001 \$62.55
 Filter 345-72-10-1002 \$2.50

NOTE: REPLACEMENT FILTER AVAILABILITY IS LIMITED 2 PER MASK

Gloves, Forest Worker

Heavy-duty, Gunn-cut, rough-out cowhide gloves are designed for use on fire lines and can be used for general forestry work. Each glove features an adjustable wrist strap. NFPA 1977 compliant. Forest Service Spec 6170-5.



Size	Part #	Price
Small	340-34-00-1000	\$21.41
Medium	340-34-00-2000	\$21.41
Large	340-34-00-3000	\$21.41
X-Large	340-34-00-4000	\$21.41

SAFETY

Goggles, NFPA

Wildland fire scratch-resistant goggle. Sealed dual UV absorbing polycarbonate lens; anti-fog on the inside/anti-scratch on the outside. Non-vented body lined with a soft closed cell foam seal for a snug fit allowing no smoke, liquids or contaminants from entering. High temperature resistant. Fits over some prescription eyewear. Meets ANSI Z87.1 plus High Impact Standards and CUL. Manufactured to NFPA 1977-2016 edition. They provide 100% UVA/UVB protection and distortion-free optical clarity.



Part # 345-64-30-0222 \$47.15



Hard Hat, Cap

These wildfire helmets are specifically engineered to meet the special needs of wildland/forestry firefighters. Manufactured from heat-resistant thermoplastic for superior impact and penetration protection, Wildfire helmets meet and exceed the performance specifications of NFPA 1977-2005.

Features include: Easy to adjust Flex-Gear® ratchet sizing suspension, Thermoplastic shell, Reflective lime-yellow stripes, Three goggle clips, Adjustable chinstrap, Comfortable 6-point ratchet suspension, Leather ratchet cover, Absorbent cotton brow pad, and Velcro attachments inside shell.



Color	Cap Style		Full Brim	
Yellow	345-56-20-9042	\$46.99	345-56-30-9047	\$51.46
White	345-56-20-9045	\$46.99	345-56-30-9050	\$51.46
Red	345-56-20-9044	\$46.99	345-56-30-9048	\$51.46

Weather Belt Kit

A complete observing kit with everything needed to measure temperature, relative humidity and wind velocity. Consists of Weather Kit Case, Smoke Chaser's Compass, Wind Speed Indicator, and Sling Psychrometer (mercury-free). Also contains 1-oz. plastic Screw-Cap-Bottle, Wood Pencil, notebook, and humidity and dew-point tables. Forest Service Spec 5100-150, MEDC-531.

Part # 220-87-10-1001 \$168.52



SAFETY

Headlamp, LED

- Cree neutral white LED with a lifespan of 50,000 hours.
- Powered by one AA (alkaline/ Ni-MH) battery (included).
- Three output levels for all kinds of lighting demands.
- Digitally regulated output maintains sectional constant brightness.
- Reverse polarity protection to protect improper battery insertion.
- One-switch control ensures easy and fast operation.
- Low-voltage warning reminds when battery replacement needed.



Headlamp 345-70-70-1301 \$26.25

Personal Strobe

The Guardian is the lightest, brightest, toughest light in its class! Features a powerful flashing LED that is visible up to one mile. Omni-directional light can be seen from all sides with unique optics. Two modes of operation: steady-on or flashing. Just flip the batteries over to change modes! Can be attached with heavy-duty clip or through the built-in belt loops.

Approx. Battery Life:

Flashing Mode = 250 hours
Steady-On Mode = 100 hours

Lithium battery included. Uses 2 CR 2032 Lithium Coin Cell Batteries.



Part # 345-70-70-1001 \$14.65



Chainsaw Operators Helmet

Sturdy hardhat with padded, six-point suspensions, adjustable hearing protectors, and nylon visor carriers with black mesh steel screens. Components meet or exceed these ANSI Standards: hardhats, ANSI Std. Z89.1-1997 Type I, Class C, E and G; ear muffs, ANSI Std. S3.19-1974; mesh screen, ANSI Std. Z87-S 1992; visor carriers, ANSI Std. Z87.1-1997. Features a premium, ratchet-tight suspension system which adjusts for snug, comfortable fit and superior earmuffs (24 NRR*) with ultra-soft cushions.

Part # 345-56-50-1001 \$41.95

Chainsaw Chaps

These heavy-duty chaps are designed specifically to protect against chainsaw cuts. The cut-resistant nylon duck shells are padded with five layers of aramid fillers. Chaps cover front and sides of legs from waist to mid-calf and are secured with adjustable waist belt and leg straps. The orange color will aid in visibility and assist users in determining when the chaps require cleaning. For proper fit, length should be selected to cover from the user's waist to at least 2" below boot top. Features a tool pouch. Forest Service Spec 6170-4F

Length	Part #	Price
32"	345-64-15-0032	\$173.92
36"	345-64-15-0036	\$173.92
40"	345-64-15-0040	\$173.92



SAFETY

Fire Shelter, Regular

New-generation fire shelter provides increased protection from radiant and convective heat in wildland firefighter entrapment situations. This set includes: fire shelter, nylon duck carrying case, carrying case plastic liner. Deployed size: 86" long; 15-1/2" high; 31" wide. Forest Service Spec 5100-606.

Part # 345-24-10-0925 \$426.78



Fire Shelter, Large

New-generation fire shelter provides increased protection from radiant and convective heat in wildland firefighter's entrapment situations. Large-size shelter designed for firefighters taller than 6'1" or whose girth exceeds 53" at any point. The larger fire shelter provides better protection for larger people by allowing less contact of the shelter material with the occupant's body, and it provides more air space between the shelter and occupant. The large fire shelter is easily identified by the orange deploy strap. This set includes: fire shelter, nylon duck carrying case and carrying case plastic liner. Deployed size: 96" long; 19-1/2" high; 33" wide. Forest Service Spec 5100-606.

Part # 345-24-10-0975 \$537.58



Practice Shelter, Regular

Reusable practice fire shelter system for training in use of fire shelter. Same size and dimensions as fire shelter. Includes the carrying case, case liner, polyvinyl bag, and practice shelter. Note: This item is not fire-resistant and should not be used as a fire shelter. Forest Service Spec 5100-611.

Part # 345-24-20-2678 \$147.55



Practice Shelter, Large

Reusable practice fire shelter system for training in use of large fire shelter. Large-size shelter designed for firefighters taller than 6'1" or whose girth exceeds 53" at any point. Same size and dimensions as Large fire shelter. Includes the carrying case, case liner, polyvinyl bag, and practice shelter. Note: This item is not fire-resistant and should not be used as a fire shelter. Forest Service Spec 5100-611.

Part # 345-24-20-2799 \$168.63



SAFETY

Ear Plugs

Ear Plugs, Without Cord, Noise Reduction Rating NRR 33dB, Plug Color and style may vary from picture. Plug material polyurethane packaged in poly bags. Standards ANSI S3.19-1974, Package Quantity 200

345-90-22-1001 \$17.50



Gas Can, Type I Safety

Type I safety can used to store, transport, and dispense flammable liquids safely; has single spout for filling and pouring. Made of galvanized steel, which is resistant to rust, dents, and certain chemicals; red powder-coated finish resists scratches, chipping, fading, and other wear. Stainless steel flame arrester helps prevent liquids inside the can from igniting and keep flames from spreading. Spout measures 1.62" in diameter; rounded handle facilitates carrying. FM Approved; complies with OSHA Standard 1910.106 for the safe storage and handling of flammable liquids

Size	Part #	Price
1 gal.	450-17-10-1000	\$58.80
2 gal.	450-17-10-2000	\$52.80
5 gal.	450-17-10-5000	\$57.99

Tow Strap

These cargo straps are ideal for towing and freeing trucks or disabled vehicles from mud, sand or snow. They feature double twisted ends that fit right onto tow hooks. Tough terylene webbing sustains wear and tear. Available in 15,000—20,000—40,000# sizes.

WLL	Part #	Price
20,000	450-21-96-2000	\$65.52
40,000	450-21-96-4000	\$110.34



Anchor Shackle

Anchor shackles are safety screw type.

5/8—5 Ton 450-19-70-0058 \$33.22 (for use with 20,000# strap)
 7/8—9.5 Ton 450-19-70-0078 \$61.31 (for use with 40,000# strap)

SAFETY



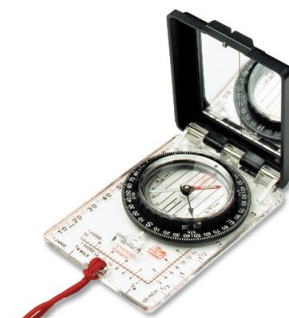
Wheel Chock

Heavy duty rubber wheel chock with chain eye. Measures 10"L x 8"W x 6"T and weighs 8.25 lbs.

Part #075-56-32-1001 \$22.00

Compass, Ranger Type

Rotating compass dial with graduations every 2°. Swedish steel needle pivots on a liquid damped, sapphire jeweled bearing. Built-in magnetic declination adjustment screw. Mirror-sighting with luminous points. Needle orienting arrow and lines. Map magnifier. Clear protractor baseplate has inch scale edge (graduated in 20ths), millimeter scale edge and Romer Scales of 1:24,000, 1:25,000, and 1:50,000. Clinometer reads to ±90°. 2-1/4" x 4" closed. Lanyard and instructions included.



Part # 578-38-11-1002 \$63.00



Wipe; Fire Decontamination—**MAXIMUM ORDER IS 144**

Firewipes' On-Scene Firefighter Skin Decontamination Wipes help clean soot, smoke, and other potential carcinogens of complete and incomplete combustion off the skin. The 8" x 12" textured industrial strength disposable wipes are infused with cleansing compounds for use on all external dermal areas. The wipes are also saturated with a unique formula specifically designed to minimize additional carcinogenic exposure through dermal absorption.

Part # 735-60-93-1001 \$1.15

Flagging Tape—

Vinyl flagging, 2 mil thick x 1-1/2" x 150feet long.

PART #	DESCRIPTION	PRICE	PART #	DESCRIPTION	PRICE
832-48-10-1001	FLAGGING, BLUE	\$1.75	832-48-11-1004	FLAGGING, RED GLO	\$1.50
832-48-10-1002	FLAGGING, GREEN	\$1.75	832-48-11-1005	FLAGGING, YELLOW GLO	\$1.50
832-48-10-1003	FLAGGING, ORANGE	\$1.75	832-48-11-1006	FLAGGING, PINK GLO	\$1.50
832-48-10-1004	FLAGGING, RED	\$1.75	832-48-12-1005	FLAGGING, YELLOW W/ BLACK STRIPE	\$3.25
832-48-10-1005	FLAGGING, YELLOW	\$1.75	832-48-12-1006	FLAGGING, PINK GLO W/ BLACK STRIPE	\$3.25
832-48-10-1006	FLAGGING, WHITE	\$1.50	832-48-12-1007	FLAGGING, WHITE W/ BLUE STRIPE	\$3.25
832-48-10-1007	FLAGGING, BLACK	\$1.50	832-48-12-1008	FLAGGING, ORANGE GLO W/ BLACK STRIPE	\$3.25
832-48-11-1001	FLAGGING, BLUE GLO	\$1.50	832-48-13-1007	FLAGGING, WHITE W/ BLUE POLKA DOT	\$2.25
832-48-11-1002	FLAGGING, GREEN GLO	\$1.50	832-48-14-1003	FLAGGING, ORANGE GLO; "KILLER TREE"	\$3.50
832-48-11-1003	FLAGGING, ORANGE GLO	\$1.50	832-48-14-1006	FLAGGING, PINK GLO; "ESCAPE ROUTE"	\$3.50



PACKS & COMPONENTS



Field Pack, Complete, Black

Most versatile Fire Pack on the market. Our load swallowing 2200 cu in gear bag, combined with the trap pocket and lash down loops, means you can take it all with you when you're working the line. With two quick zips you can drop the gear bag and carry just the essentials - 100oz. hydration reservoir, fire shelter, fuseses, and all the gear you can stuff in the 300 cu in stash pocket. So whether you're working near equipment or out in the wilderness, the Firefly does it all. Actual color is black, pictured in red to show detail.

Part # 535-25-15-1001

\$242.21

Equipment Belt

Nylon web belt attaches to harness for added support and comfort when carrying a fire shelter. Serves as a replacement belt for the old style Complete Firefighter's Field Pack NSN 8465-01-169-3996. Forest Service Spec 5100-217.



Part # 530-25-10-1004

\$10.99



Harness, Field Pack

Comfortable, padded harness is a replacement for the harness included in the old style Complete Field Pack NSN 8465-01-169-3996. Harness is adjustable so that it may be worn by men or women. Used with equipment belt for added support to carry fire shelter. Forest Service Spec 5100-217.

Part # 530-25-10-1003

\$11.99

Belt Pack

Nylon duck belt pack replaces the belt pack included in the Complete Field Pack NSN 8465-01-169-3996. With two straps to attach to belt. Forest Service Spec 5100-217. **THIS ITEM HAS BEEN DISCONTINUED. LIMITED AVAILABILITY.**

Part # 530-25-10-1001

\$9.49



Canteen Case, Field Pack

Replacement canteen case for the Complete Field Pack NSN 8465-01-169-3996. Canteen is made of nylon duck and webbing. Forest Service Spec 5100-217. **THIS ITEM HAS BEEN DISCONTINUED. LIMITED AVAILABILITY.**

Part # 530-25-10-1002

\$10.50

PACKS & COMPONENTS



Radio Chest Pack, Pack Shack, Black

Adjustable top strap makes this chest pack fit most radio sizes. Includes battery pouch, map pocket and pen holder. Our chest pack comes with a solid fabric back with 1/8" foam to provide padding between your chest and the radio. Chest packs are 10"x10" and have a side opening map pocket. One inch nylon straps cross in back for easy adjustment. Color is black (pictured in blue to show detail)

Part # 530-25-25-1002

\$69.90

Radio Chest Pack, True North

The Dual Universal Radio Harness pairs comfort and function with a side-zip on internal pocket for faster access. Our unique internal suspension system keeps the radio harness comfortably on your chest without sagging or swinging. Holds most sizes of radios from Bendix King down to Icom and Kenwood. NFPA 1977

- ◆ 2 adjustable radio pockets fit a wide range of models from larger legacy radios to smaller, modern handsets
- ◆ Cell phone pocket developed to fit large phones and their cases
- ◆ Multiple storage throughout for batteries, maps, notebooks and pens
- ◆ Slots for holding two pens
- ◆ Low profile back harness constructed from lightweight yet durable Hypalon™
- ◆ Can mount directly to your line pack shoulder harness with Integration Straps
- ◆ Zippered front pocket for Kestrel or GPS



Part # 530-25-25-1001

\$65.15



Field Pack, Pack Sack

Intended for use in a wide variety of field-related activities, including wildland fire suppression. Large main compartment with storm flap, drawstring closure. Two side pockets, one large front pocket with zippered closure. Reinforced padded shoulder straps with quick release waist strap. Dimensions: 19 x 18 x 8

Part # 530-25-20-1005

\$41.80

HOSE, FITTINGS & ACCESSORIES



Booster Hose, Rubber

Hose is rubber with a spiral braid nylon reinforcement layer. Working pressure is 200 PSI and weight is 34 pounds per 100 ft for 3/4" and 54 pounds per 100 ft for 1".

Size	Part #	Price
3/4"	340-56-15-0750	\$1.96/ft
1"	340-56-15-1000	\$2.90/ft
1" x 100' w/Couplings	340-56-15-1010	\$322.50

Booster Hose, 1" Lightweight

A multi-purpose, lightweight, rigid 1" diameter attack hose. This uniquely constructed product features an all polyester cover for heat and abrasion resistance along with a special helical interior reinforcement to retain its rigid shape. Working pressure is 300 PSI, service test pressure is 600 PSI. Weight is 16 pounds.

Part # 340-56-10-1100 \$310.95



Discharge Hose, 3/4"

Lightweight hose features a woven synthetic jacket and is lined. The 5/8"-diameter hose features 3/4" standard garden hose threads. Operating pressure is 200 psi.

Part # 340-56-20-7505 \$48.94

Discharge Hose, 1" & 1-1/2"

Meets or exceeds NFPA 1961 and forestry spec 5100-187 standards. Type I hose is lighter in weight and has a smaller coiled diameter. Type II hose is more abrasion resistant, heavier in weight and produces a larger coiled diameter.

Size	Type I	Price	Type II	Price
1" x 50'	340-56-20-1005	\$78.20	340-56-22-1005	\$77.95
1" x 100'	340-56-20-1010	\$117.45	340-56-22-1010	\$128.55



Suction Hose, 1-1/2" & 2-1/2"

PVC lightweight fire suction hose. Clear and flexible to allow visual monitoring, smooth bore for unrestricted flow, operates in extreme temperatures, and is very flexible. For drafting only. Meets or exceeds all NFPA requirements for fire hose, current edition.

Size	1-1/2"		2-1/2"	
Bulk, Per Foot	340-56-30-1500	\$4.26	340-56-30-2500	\$6.50
9' w/Couplings	340-56-30-1509	\$55.59	340-56-30-2509	\$63.52
6' w/Couplings			340-56-30-2506	\$54.88

HOSE, FITTINGS & ACCESSORIES

Nozzle, Lexan

Barrel-type plastic polycarbonate nozzle adjusts from straight stream to fog to off. Rubber bumper and gasket included. Available in 1" NH thread.



	<u>Nozzle</u>		<u>Gasket</u>	
1"	340-64-10-1000	\$12.57	340-64-50-1000	\$2.08



Nozzle, Ranger

These durable, lightweight firefighting nozzle are constructed of hard coated aluminum with brass and stainless steel internal components. A bumper provides protection and makes stream selection much easier, especially with gloves. The bumper is equipped with teeth which gives a more solid fog pattern than standard nozzles. Dual Range fire hose nozzles are adjustable to straight stream, fog patterns, and to on/off position. Available in 1" or 1-1/2" NH thread.

	1"	
<u>Nozzle</u>	340-64-20-1000	\$70.77
<u>Gasket</u>	340-64-50-1001	\$1.09

Nozzle, Quad

The quad nozzle offers 4 different spray volumes. It is a simple rotation of the knurled red band. This is a straight bore nozzle with 4 different diameter orifices: 5/16", 1/4", 3/16" and 1/8". It is available in 1" or 1-1/2" NH thread.



	<u>Nozzle</u>	
1-1/2"	340-64-30-1500	\$50.49
	<u>Adapter to convert to 1" nozzle</u>	
1"	340-64-30-1000	\$26.96



Nozzle, Foam

These air aspirating nozzles are manufactured from the latest engineering grade composite polymers for resilience and durability on the fire scene. They are available in 2 flow rates. The 3/4" nozzle has garden hose threads and flows 8 gpm. The 1-1/2" nozzle has NH threads and flows 15 gpm.

3/4"	340-64-40-0340	\$17.37
------	----------------	---------

HOSE, FITTINGS & ACCESSORIES



Hose thread Reducers, Increases and Adapters

Aluminum, forestry type fitting. Used to reduce, increase, or adapt thread size..

GHT—Garden Hose Thread
 NPT—Tapered Pipe Thread
 NST—Standard Hose Thread (also known as NH)
 NPSH—Straight Pipe Thread (commonly used by USFS)

PART #	DESCRIPTION	PRICE
340-56-60-3410	3/4" F-GHT X 1" M-NST	\$8.50
340-56-61-3434	3/4" F-GHT X 3/4" M-NPT	\$9.75
340-56-74-3410	3/4" F-NPT X 1" M-NST	\$7.80
340-56-62-3434	3/4" M-GHT X 3/4" M-NPT	\$7.85
340-56-77-1010	1" F-NPSH X 1" MNST	\$19.09
340-56-76-1034	1" F-NPSH X 3/4" M-GHT	\$7.50
340-56-74-1010	1" F-NPT X 1" M-NST	\$15.23
340-56-73-1034	1" F-NPT X 3/4" M-GHT	\$7.80
340-56-71-1010	1" F-NST X 1" M-NPSH	\$12.50
340-56-67-1010	1" F-NST X 1" M-NPT	\$8.81
340-56-64-1010	1" F-NST X 1" M-NST	\$7.75
340-56-63-1034	1" F-NST X 3/4" M-GHT	\$15.68
340-56-72-1010	1" M-NST X 1" M-NPSH	\$8.75
340-56-70-1010	1" M-NST X 1" M-NPT	\$16.59

Cap with Chain

Aluminum hose thread cap with chain. All threads are NST.

Size	Part #	PRICE
1"	340-56-79-1000	\$16.99



HOSE, FITTINGS & ACCESSORIES

Valve, Gated Wye

Aluminum wye valve has a female inlet and two ball valved male outlets. Ball-type release of water either or both outlets. Working pressure is 600 psi. Forest Service Spec 5100-380

1" 340-88-10-1010 \$211.20



Valve, Shut-off

Aluminum valve has a female threaded inlet with gasket recess and male threaded outlet. Features an on-off or open-close lever with stops at both positions. Removable inlet or outlet allows for easy cleaning and repair. With a 600 psi rating. Forest Service Spec 5100-238.

1" 340-88-20-1000 \$132.31



Pond Strainers & Suction Boxes only available with purchase of approved pump



Pond Strainer w/ Foot Valve

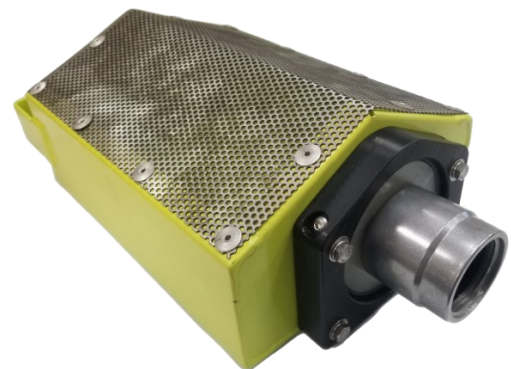
Opens and closes automatically when you start and stop drafting water. Allows full flow for capacity but when you stop pumping it closes automatically and keeps the pump primed by preventing water from flowing out. 2-1/2" size includes eyebolt for rope. Made of coated aluminum. NST threads.

1-1/2" 460-85-40-0150 \$90.50
2-1/2" 460-85-40-0250 \$227.00

Suction Box

Plastic suction box. Available in 1-1/2" or 2-1/2" NH. Is made from sturdy plastic with plastic mesh. Both feature foot valves.

1-1/2" #999-90-50-2003 \$126.09
2-1/2" #999-90-50-2004 \$132.49



HOSE, FITTINGS & ACCESSORIES

Wrench, Spanner

Hose coupling-type wrench is designed for use on slotted or rocker-lug couplings on Forest Service fire hoses. Spanner wrench cannot be used on pin-lugs. Made of bronze, forged brass, cast aluminum or forged aluminum. Forest Service Spec 5100-101.

Small	340-60-87-1001	\$7.09
Large	340-60-87-1002	\$8.40
Pin Type	340-60-87-1003	\$9.00



Clamp, Hose Shut-off

Shut-off clamp is designed for use on single-jacket, rubber-lined fire hoses sized 1" and 1-1/2". Capable of shutting off water in a hose at 300 psi operating pressure. Lightweight and compact enough to carry in a hip pocket or on a belt loop. Forest Service Spec 5100-245.

Part # 340-06-25-1002 \$44.02

Wrench, Foam Pail

The Universal Foam Container Wrench allows a full 360 degree rotation without skinning knuckles. Light weight yet made with high strength aluminum makes it a perfect tool for opening most foam containers.

Part # 340-60-87-1005 \$27.90



PUMPS & PARTS

Pump, Honda WX15

This lightweight pump is powered by the 2.5 HP GX50 mini 4-stroke engine. This pump offers exceptional performance and is great for truly portable pumping power. 1-1/2" NPT suction & discharge.

Part # 720-79-10-1001 \$472.41



Pump, Honda WH15X

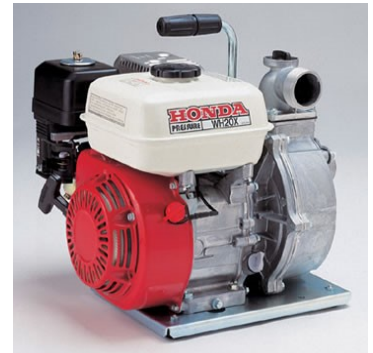
This high pressure pump is powered by the 4 HP GX120 Industrial Engine. This pump offers exceptional performance when higher pressure is required in applications such as using sprinklers or a nozzle. 1-1/2" NPT suction & discharge.

Part # 720-79-20-0150 \$619.54

Pump, Honda WH20X

This high pressure pump is powered by the 5.5 HP GX160 Industrial Engine. This pump offers exceptional performance when higher pressure is required in applications such as using sprinklers or a nozzle. 2" NPT suction & discharge.

Part # 720-79-20-0200 \$688.51



PUMPS & PARTS

Pump, CET with Honda Engine

A compact design pump that gives you a multitude of applications. It delivers amazing pressure performance so as to meet the needs of several application.

Dimensions: Length : 20" (508 mm); Width : 17" (432 mm); Height : 17" (432 mm). Weight : 70lbs (32 kg)

ENGINE SPECIFICATIONS:

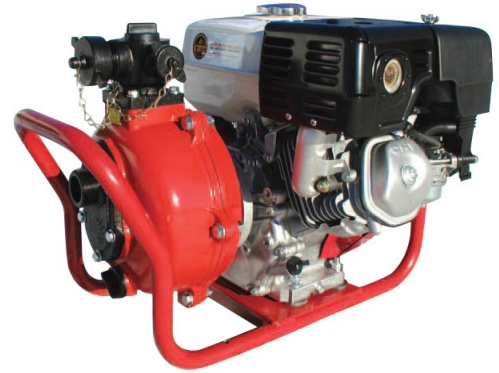
- * Honda GX270, air cooled engine
- * Single cylinder gasoline engine
- * Manual recoil start as backup
- * 9 hp@3600 rpm
- * Electric start
- * 1,7 gallon (6,5 L) integrated fuel tank

PUMP UNIT SPECIFICATIONS

- * C.E.T Dual Stage Centrifugal Pump
- * Aluminum impeller
- * Self priming system
- * Outlet connection: two 1" and one 1 ½"
- * Pump body made from aluminum
- * Mechanical shaft seal
- * Two stages
- * Inlet connection: 1 ½"

Part # 720-20-30-1001

\$2,567.75



Pump, Darley 2BE18V with Mechanical Seal

Medium Pressure, High Volume, Direct Drive, Engine Mounted Pump. Includes base with handles, exhaust primer, 6 gallon fuel tank, control panel, and spark arrestor. Briggs & Stratton Vanguard 4 cycle, 18 HP, V-twin, OHV, replaceable oil filter, 34.75 cu. in. displacement, 12-volt starter, recoil rope start back-up, 16 amp regulated alternator, 7.2 qt. fuel

Dimensions: 27"L x 21"W x 25"H, 145 lbs. (66 kg)

Features

- Aluminum alloy casing
- Bronze impeller and seal ring
- Shredded plastallic packing
- (2) 2 ½"NPT and (2) 1 ½" NPT discharges
- Discharge valve
- Stainless steel impeller shaft
- 3" NPT suction

LIMITED STOCK—UP TO 8 WEEK LEAD TIME

Part # 720-15-15-0189

\$6,709.80 + \$150.00 Freight

FOAM UNITS & ACCESSORIES

Foam Unit, Scotty 4171

The 4071 Foam Eductor/Mixer is a simple "A-the-P" unit to educt foam concentrate into hose lines. It is mounted between the discharge and suction side of a pump. For use on portable forestry pumps or fitted permanently to skid units, the 4071 is a simple and effective way to add a foam capability to equipment. The unit is adjustable, permitting various foam ratio percentages to be educted depending on the nozzles being used. Includes the eductor, pressure hose, pick-up hose and two connecting tees; a 1 1/2" and a 2" size with NPSH threads.



Part # 340-50-10-1000 \$439.80

Scotty 4171—Eductor Only

The unit is adjustable, permitting various foam ratio percentages to be educted depending on the nozzles being used. DOES NOT INCLUDE pressure hose, pick-up hose and two connecting tees; a 1 1/2" and a 2" size with NPSH threads.



Part # 340-50-10-1003 \$270.32

Foam Pail Adapter

Part # 340-50-10-1006 \$17.15



Foam Unit, Cascade Foam-Flo

The Foam-Flo™ meters wildland (class A) foam concentrate into hose lines in the desired percentages. The Foam-Flo™ can treat up to 100 GPM or as low as 5 GPM of water. Foam concentrate can be metered into the hose lines in various amounts, from .01% to 1%. All hoses and fittings included



Part # 340-50-30-1001 \$403.00

Foam, Class A, 5 gal

5 gallon pail of Class A foam. Specifically formulated to make water more effective. The unique combination of surfactants reduces water's surface tension, creates a superior foam blanket when mixed with air that surrounds fuels with a thick layer of water, creates a barrier between the fuel and the fire, allows fire fighters to see application areas, and knocks down fire faster than water alone. Tested and qualified by the U.S. Forest Service. The U.S. Forest Service tests for corrosion properties along with environmental, safety and health testing. These tests ensure that the product is safe for the personnel who use it and safe for the environment.

LIMIT 10 PAILS PER YEAR - SEE NEXT PAGE FOR MORE INFORMATION



Part # 340-41-10-0881 \$107.59 (est. shipping cost is \$16/pail)

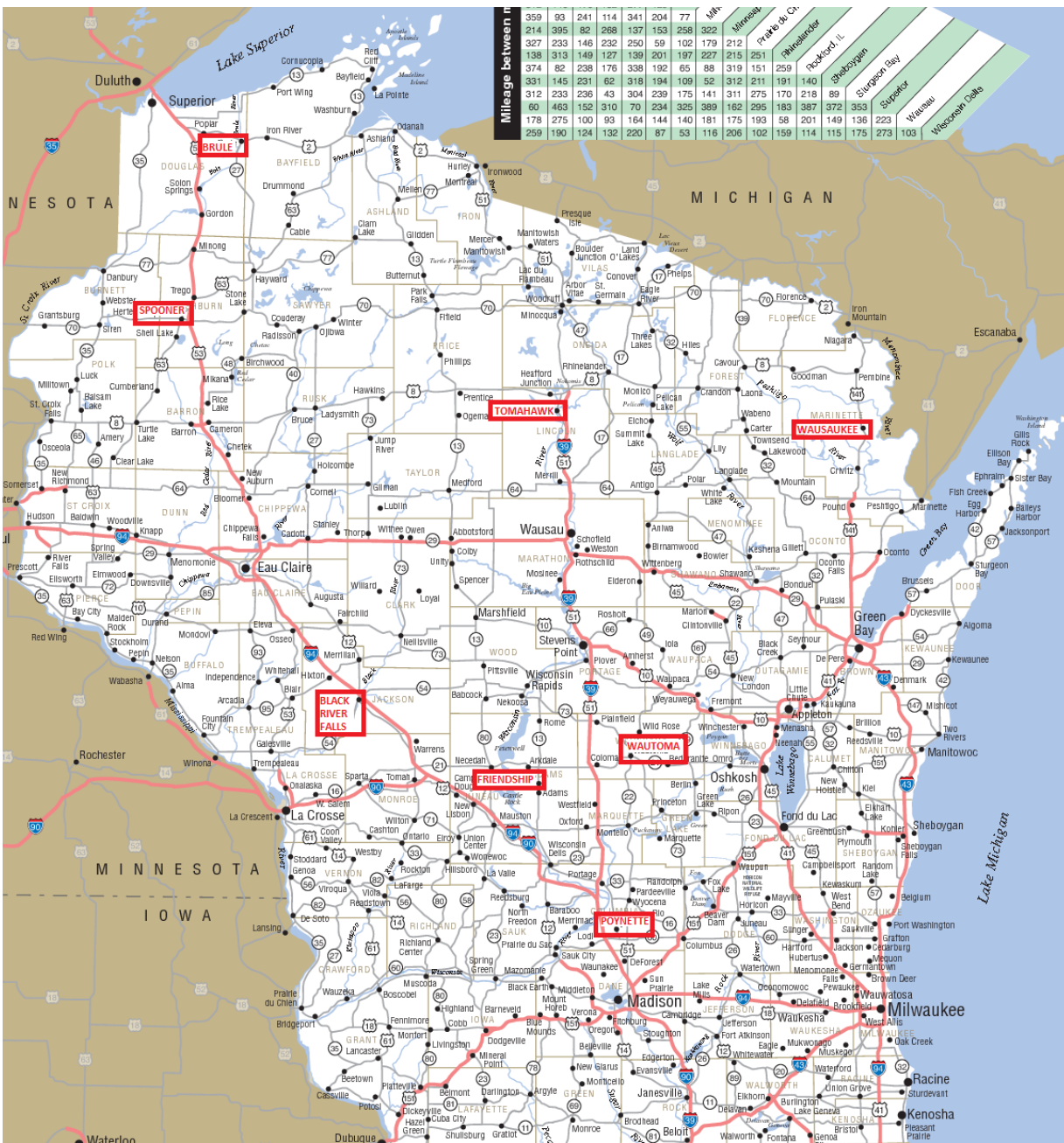
FOAM UNITS & ACCESSORIES

The Stockroom provides foam to Fire Departments and Cooperating Non-Profit organizations to support our partners' **wildland fire suppression and prescribed fire needs**. ***Orders are limited to 10 pails per year *** per organization.*** If your wildland fire needs exceed that amount, contact your local ranger to pursue an exception. (*****per year is calculated from last foam order date**)

To better serve our customers, we have established several foam caches around the state. Just complete the order form as you normally would and note in the "comments" section at which cache you would like to pick up. We will forward the necessary paperwork to the appropriate contact and you can contact them directly to arrange pick up.

FOAM CACHE CONTACTS

POYNETTE N3344 STEBBINS RD	BROOKE HUSHAGEN	608-635-8121
WAUTOMA 427 E. TOWER DR	JARED LABBUS	920-604-5605
FRIENDSHIP - 532 N. MAIN ST	ALEX GRUBBS	715-490-0610
BLACK RIVER FALLS - 910 HWY 54 E	SCOTT LOVELAND	715-896-0535
BRULE - 6250 S. RANGER RD	ADAM STEGMANN	715-815-0658
SPOONER - 810 W. MAPLE ST	REBECCA STEIGERWALDT	715-416-0102
WAUSAUKEE - 1025 HWY C	KEVIN GILBERT	715-923-1310



HOSE REELS & PARTS

Hose Reel Model EF4038-17-18RT

Low profile, electric. Inlet, outlet riser and rewind mechanism on the operator's right. Hose unwinds from the top of the reel. Reel holds 200' of 3/4" hose or 100' of 1" hose. Net wt. is 70#, ship wt. is 112#. Red in color.

Part # 340-32-63-2001 \$820.37



WINCHES & COMPONENTS

Winch, Warn Zeon 10-S multi-mount

All the power and reliability of the Zeon 10S in a portable package. Max line pull of 10,000 lbs at 4.8 feet per minute. Includes 3/8 x 100 foot Spydura Synthetic Rope. Max draw is 409 Amps at 10,000lbs. Plugs into any standard 2" Class III receiver hitch and gives you the ability to move the winch from the front or back of your rig. This Kit includes winch, remote, carrier, 7.5' power lead with quick connect plug for front of vehicle and hawse fairlead. Requires 2" receiver for mounting.

Part # 065-94-76-7441 \$1,569.99

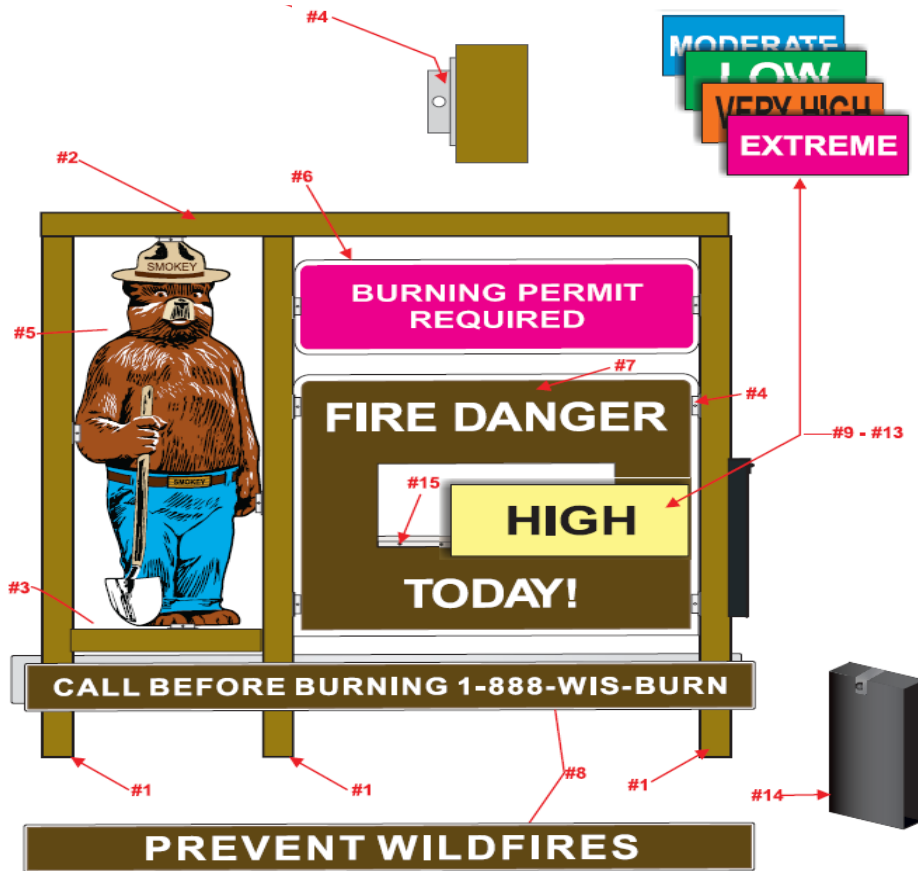


Winch, Power Lead, 20ft

Warn Cable Kit, 20', 175 Amp. 20'6m Quick Connect power cable, for rear of vehicle. Includes power interrupt kit. The power interrupt kit allows you to connect aftermarket accessories to a battery lead and then disconnect power from a dash mounted switch. Recommended for extra protection.

Part # 065-94-76-2963 \$241.81

SIGNS & PARTS



999-99-00-8000 Smokey Sign, Complete

\$1,558.55 (est shipping is \$250)

Complete sign does not include lumber. You will need to purchase it locally.

DECALS

DIESEL FUEL
GASOLINE

7.209"
DRIP TORCH
FUEL
0.750" 2.489"

Mixed
Gas

Part #	Description	Price
255-26-10-1002	Decal: "DIESEL FUEL"; 2" x 7"	\$0.35
255-26-10-1009	Decal: "GASOLINE"; 2" x 7"	\$0.35
255-26-10-1011	Decal: "MIXED GAS"; 2" x 4"	\$0.35
255-26-10-1031	Decal: "Drip Torch Fuel"; 2-1/2" x 7-1/4"	\$0.47

FLAGS & BANNERS



Sign; Feather Flag; Windy?

Feather flag and stand, single sided.

Part # 350-10-10-1001

\$272.79



BANNER; VINYL; 4FT X 16FT; FIRE ENGINE

4FT X 16FT, single sided, vinyl banner. Grommets every 18 inches and rope sewn in hem.

Part # 350-10-11-1001

\$162.05



BANNER; VINYL; 4FT X 16FT; WILDFIRES

4FT X 16FT, single sided, vinyl banner. Grommets every 18 inches and rope sewn in hem.

Part # 350-10-11-1002

\$162.05