

Lake Superior Fisheries Management Plan



September 7, 2017



Meeting goals

1. Introductions and responsibilities
2. Discuss timeline
3. Discuss management plan structure
4. Identify desired future condition
5. Identify future meeting tentative dates and locations

Introductions

- People
- Expectations
- Timeline
- Process

Advisory panel responsibilities

- Advise WDNR on development of vision, goals, objectives, and tactics.
- Represent viewpoint of stakeholder groups
- Provide bi-directional communication between WDNR and public
- Take accountability for final plan and present with WDNR to public
- Attend 6-8 meetings this fall/winter
And 2-3 next fall/winter



Lake Superior Fisheries Management Plan 2019 – 2028

Ambitious timeline:

June 2017: First public meeting, initial comment period

September through Early 2018: Develop outline – vision, goal, outline, tasks

Early 2018: Present progress on outline to public

Spring 2018: Finalize first draft.

Summer 2018: Present 1st draft to public, second comment period.

Fall/Winter 2018: Incorporate comments and develop final draft.

Early 2019: Present final draft to public/comment period.

Summer 2019: Finalize

Lake Superior Fisheries Management Plan 2019 – 2028

Ambitious timeline:

June 2017: First public meeting, initial comment period

September through Early 2018 : Develop outline – vision, goal, outline, tasks

Early 2018: Present progress on outline

Spring 2018: Finalize first draft.

Summer 2018: Present 1st draft to public, second comment period.

Fall/Winter 2018: Incorporate comments and develop final draft.

Early 2019: Present final draft to public/comment period.

Summer 2019: Finalize

**Advisory Panel
(monthly meetings)**



Manager's Models

- Visual representation of how management functions within a system
- Experience, connection to resource, values, biases and other factors guide each individual's Model of Management
- Integrate biological and societal knowledge into management decisions and actions

Developing a Lake Superior Management Model

Includes:

Ecological

Social

Economic

Political

Others...



Developing a Lake Superior Management Model

Includes:

Ecological

Social

Economic

Political

Others...

Key concepts:

Values

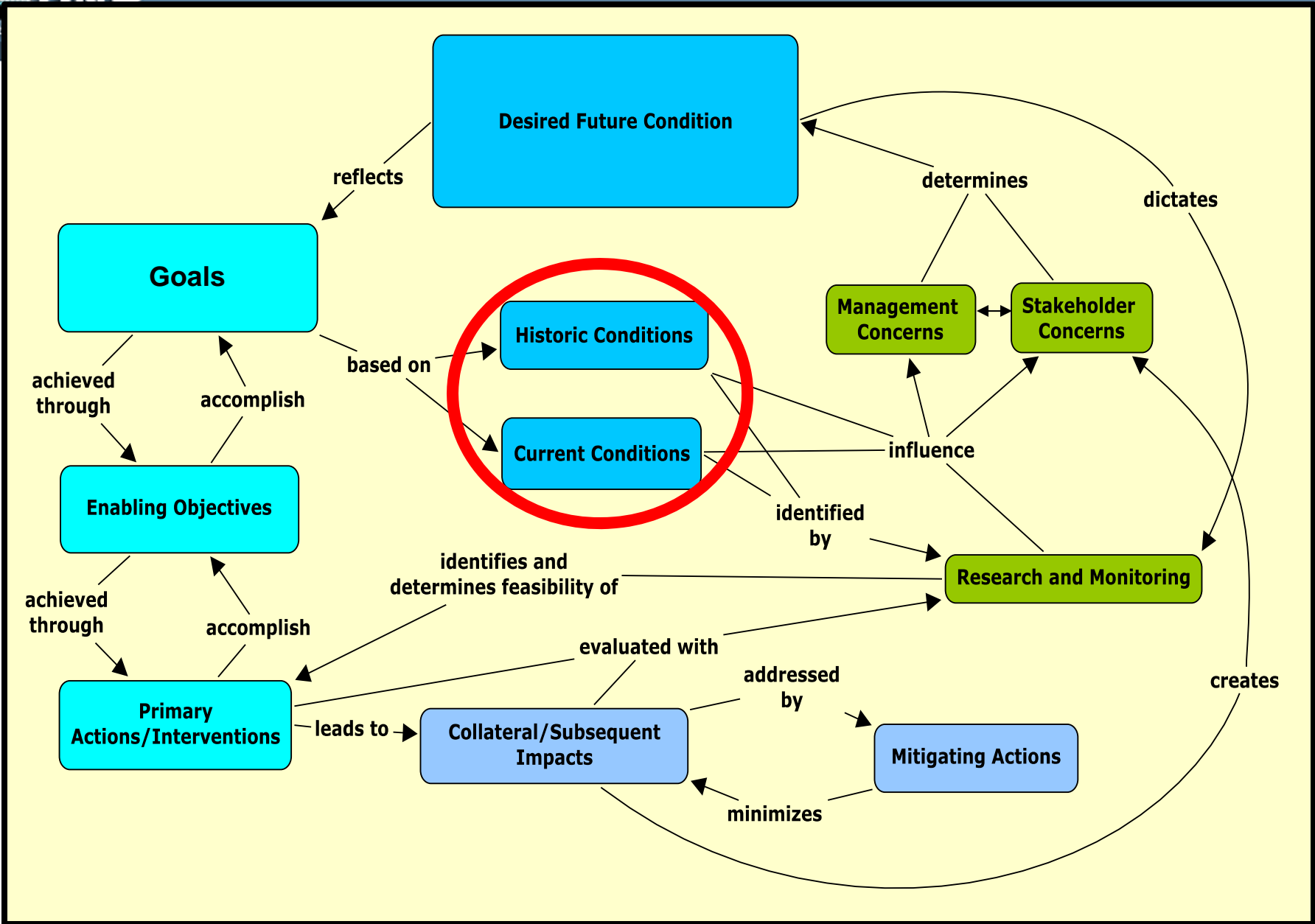
Impacts

Limits and capacity

Scale

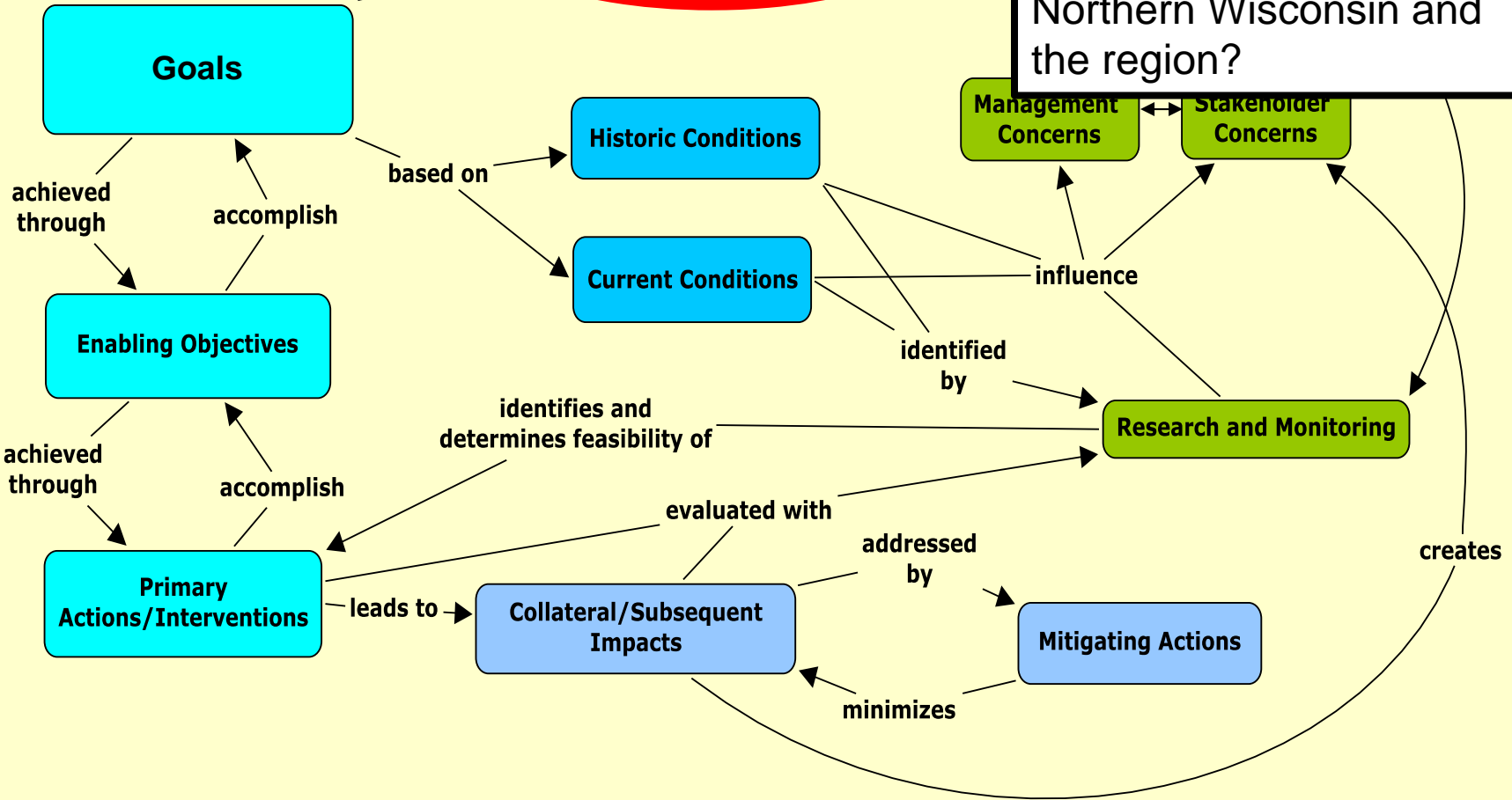
Decision making

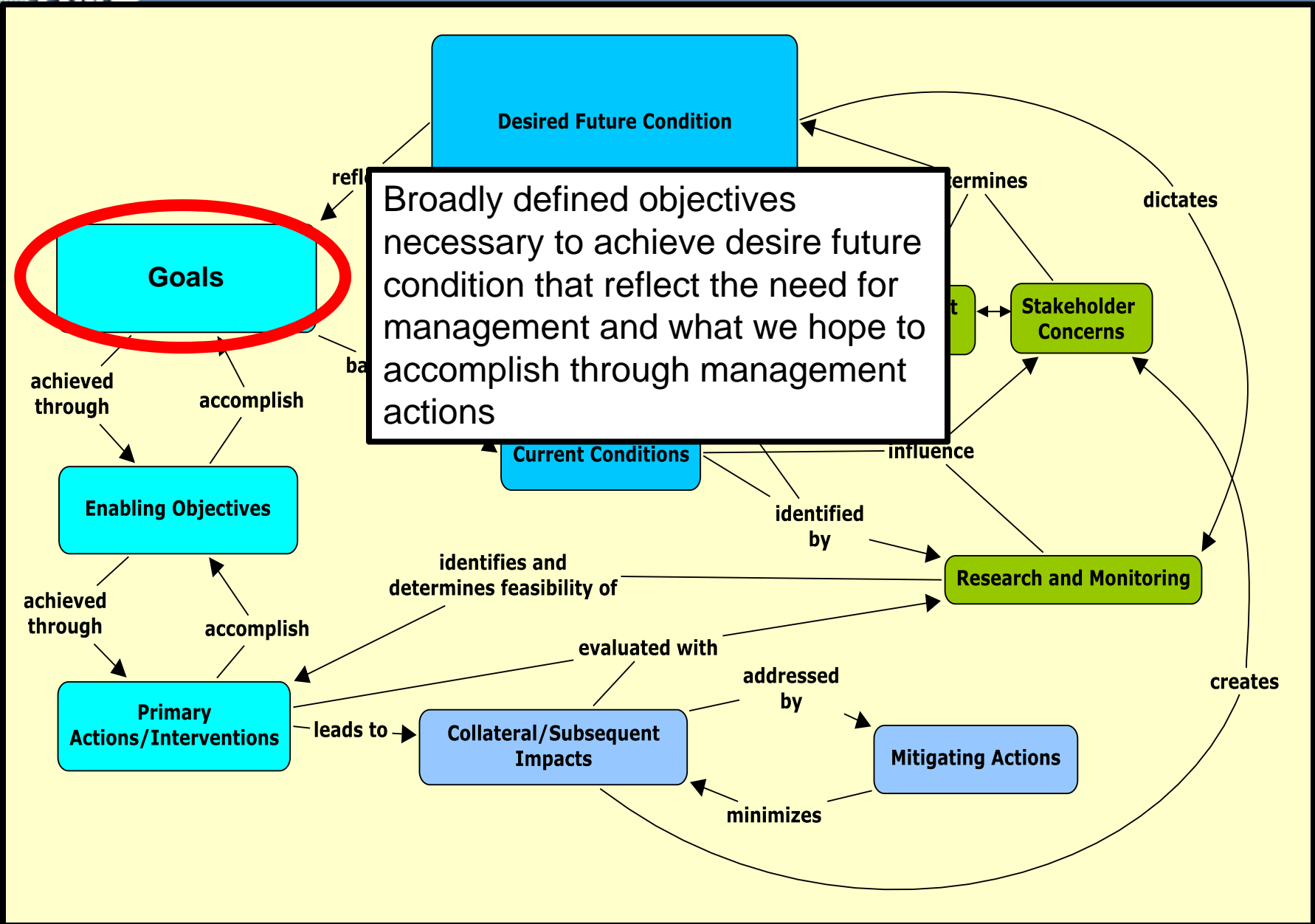


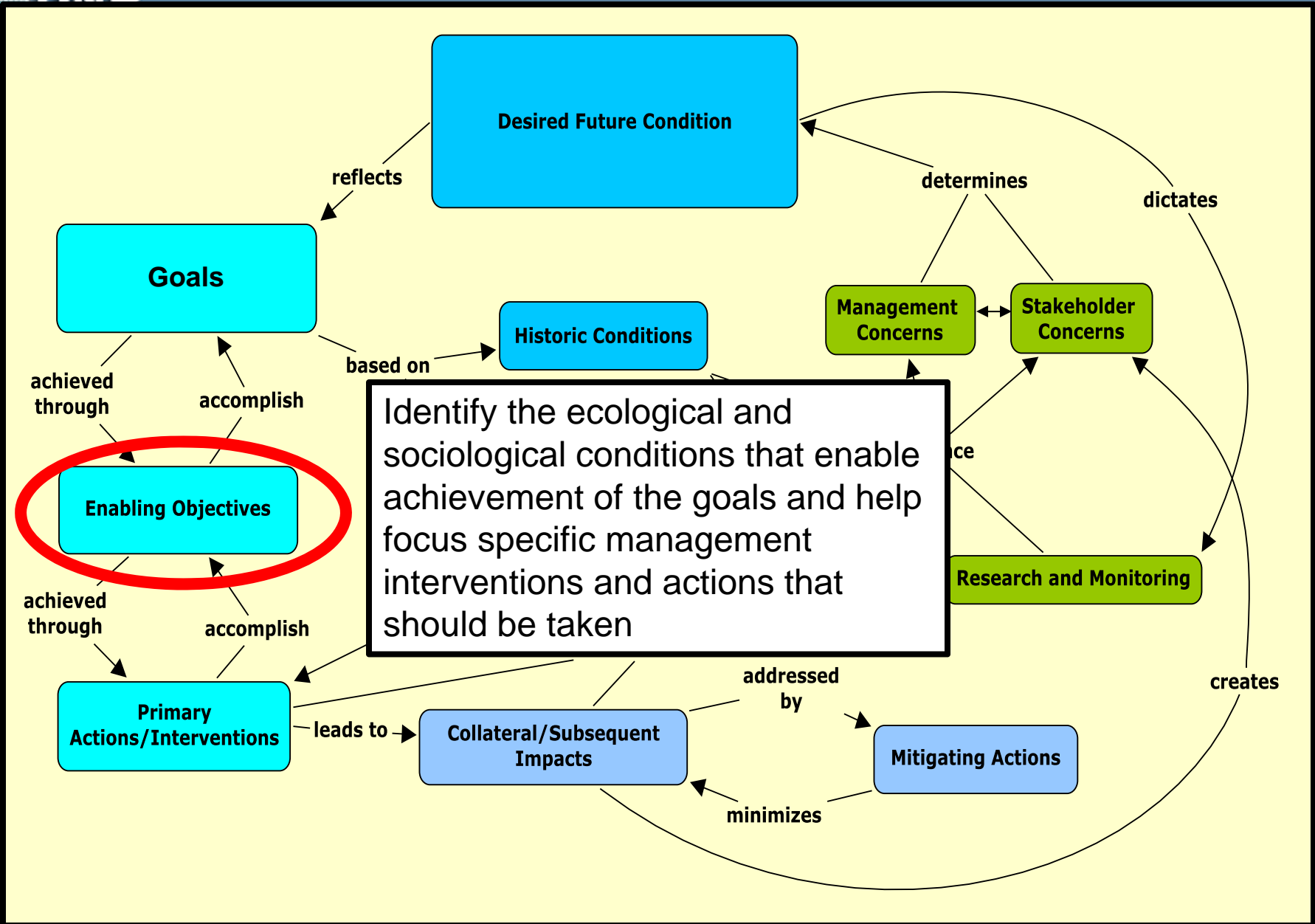


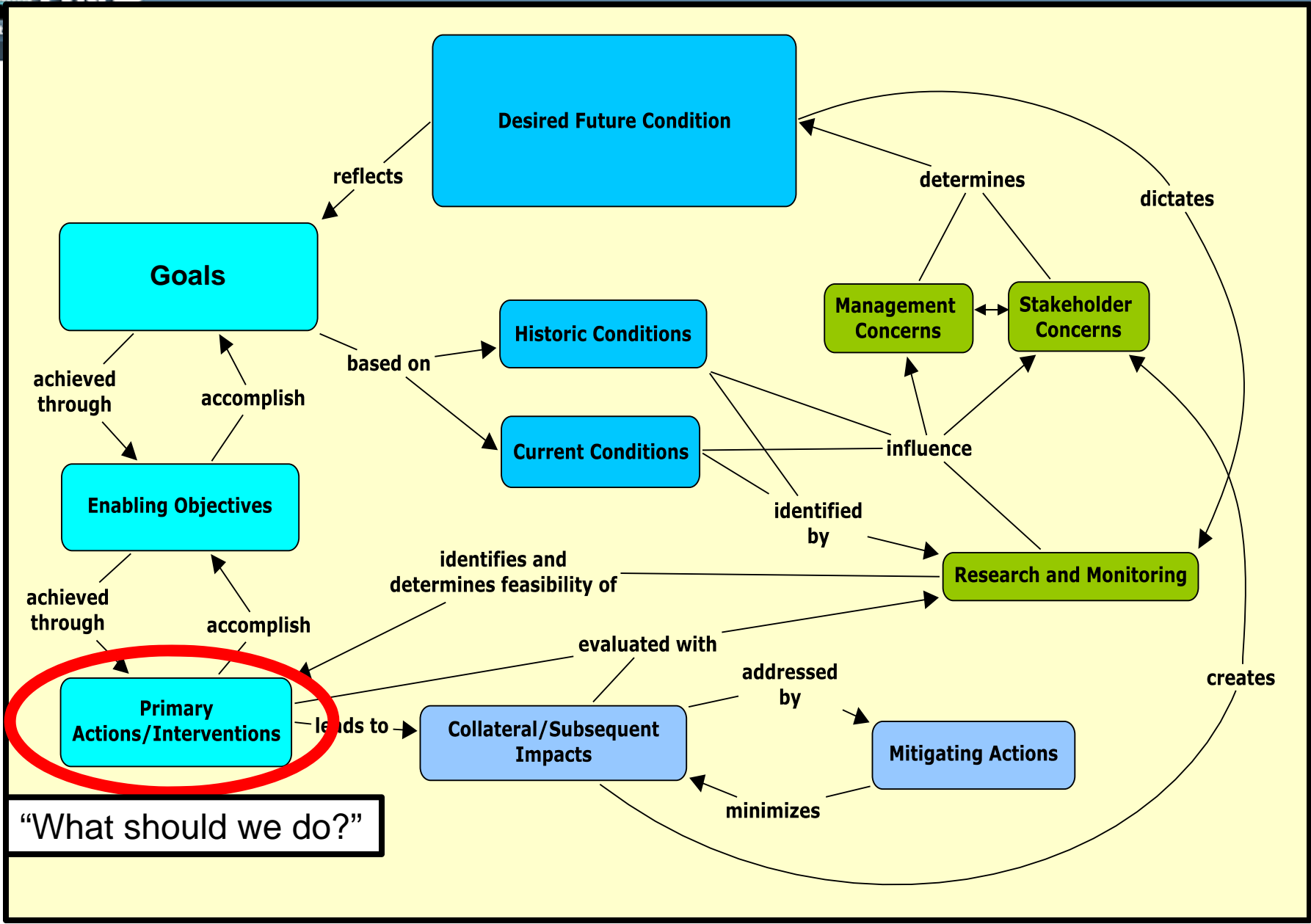


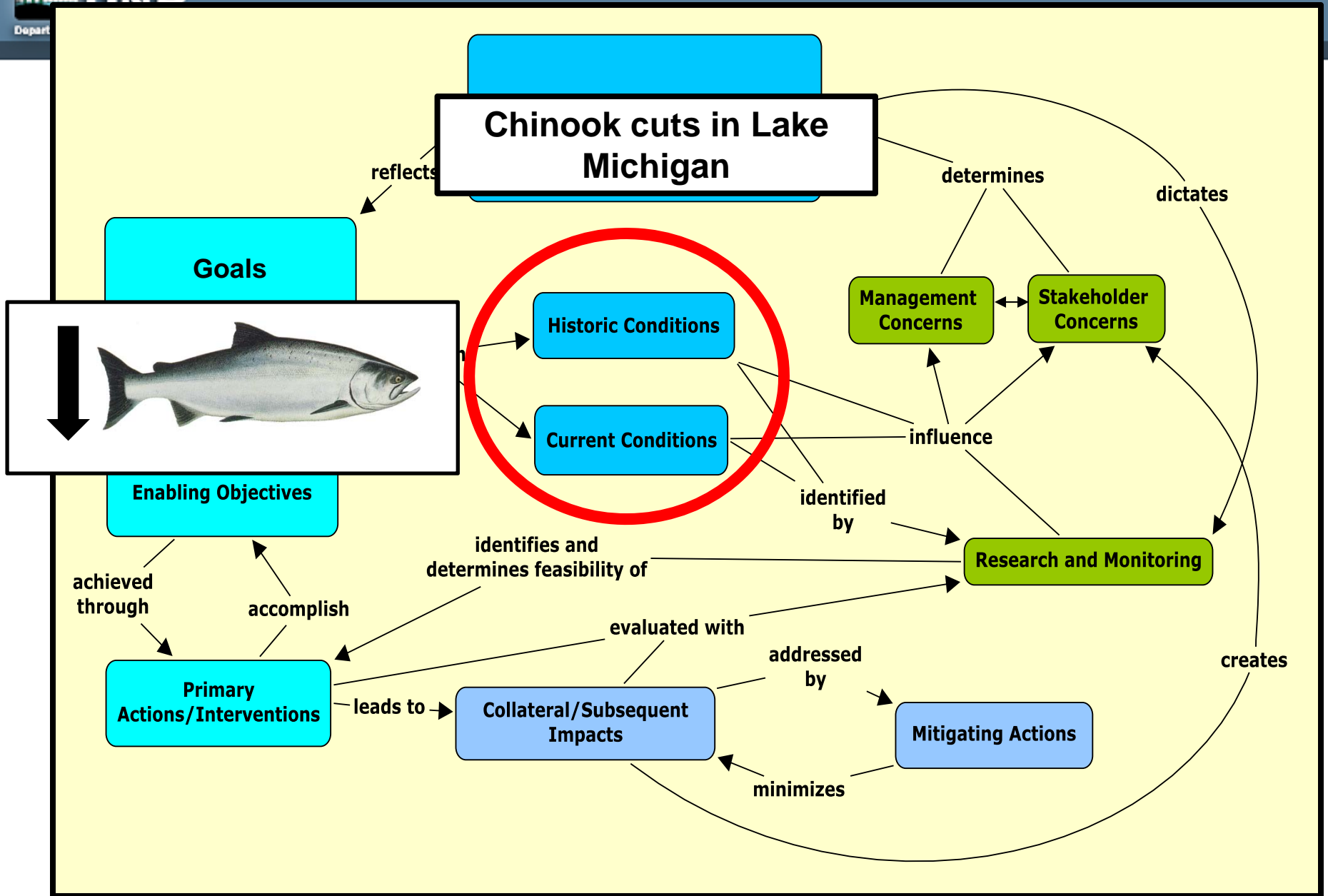
What role will Lake Superior play in the ecological, social, and economic well-being of Northern Wisconsin and the region?

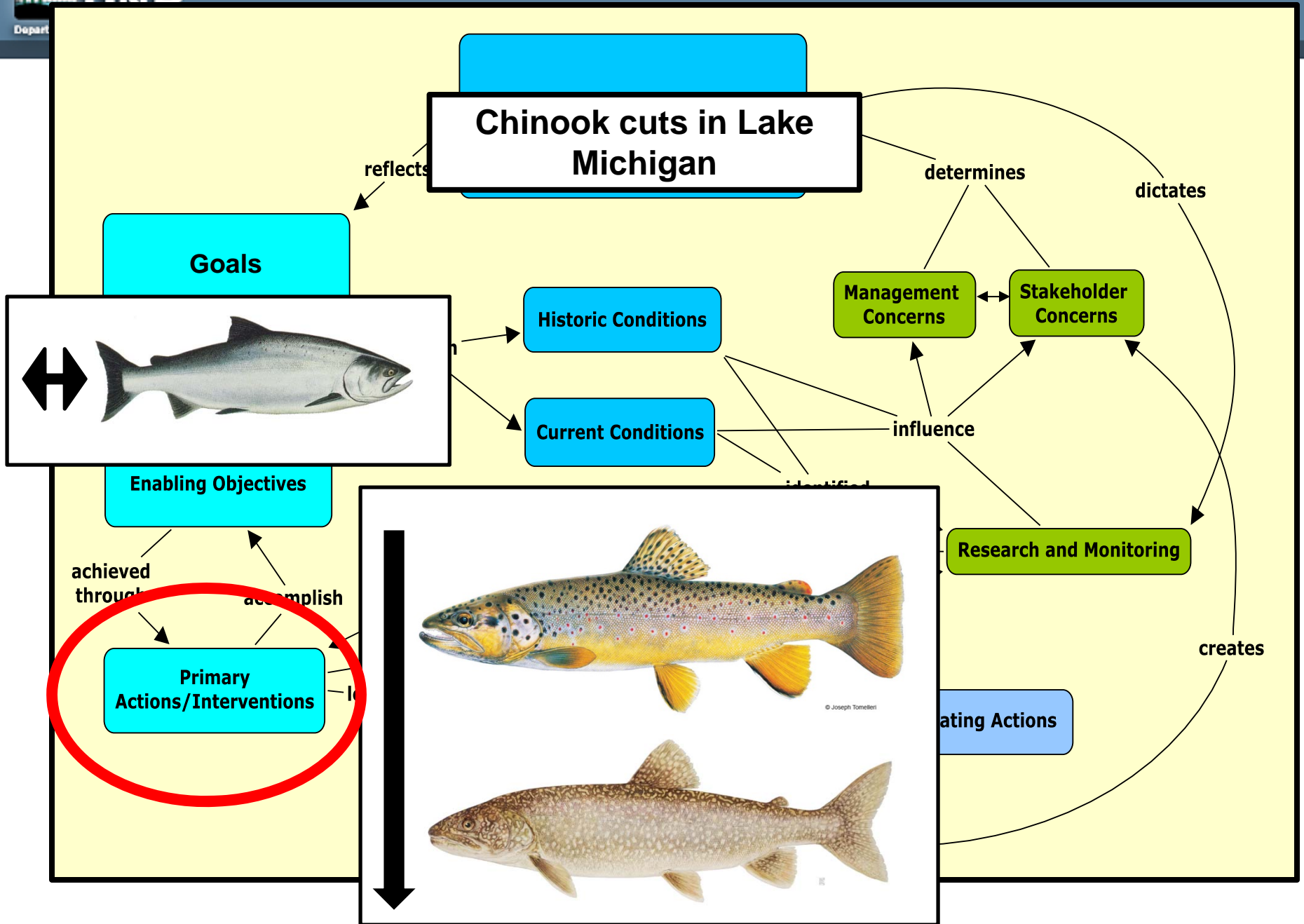


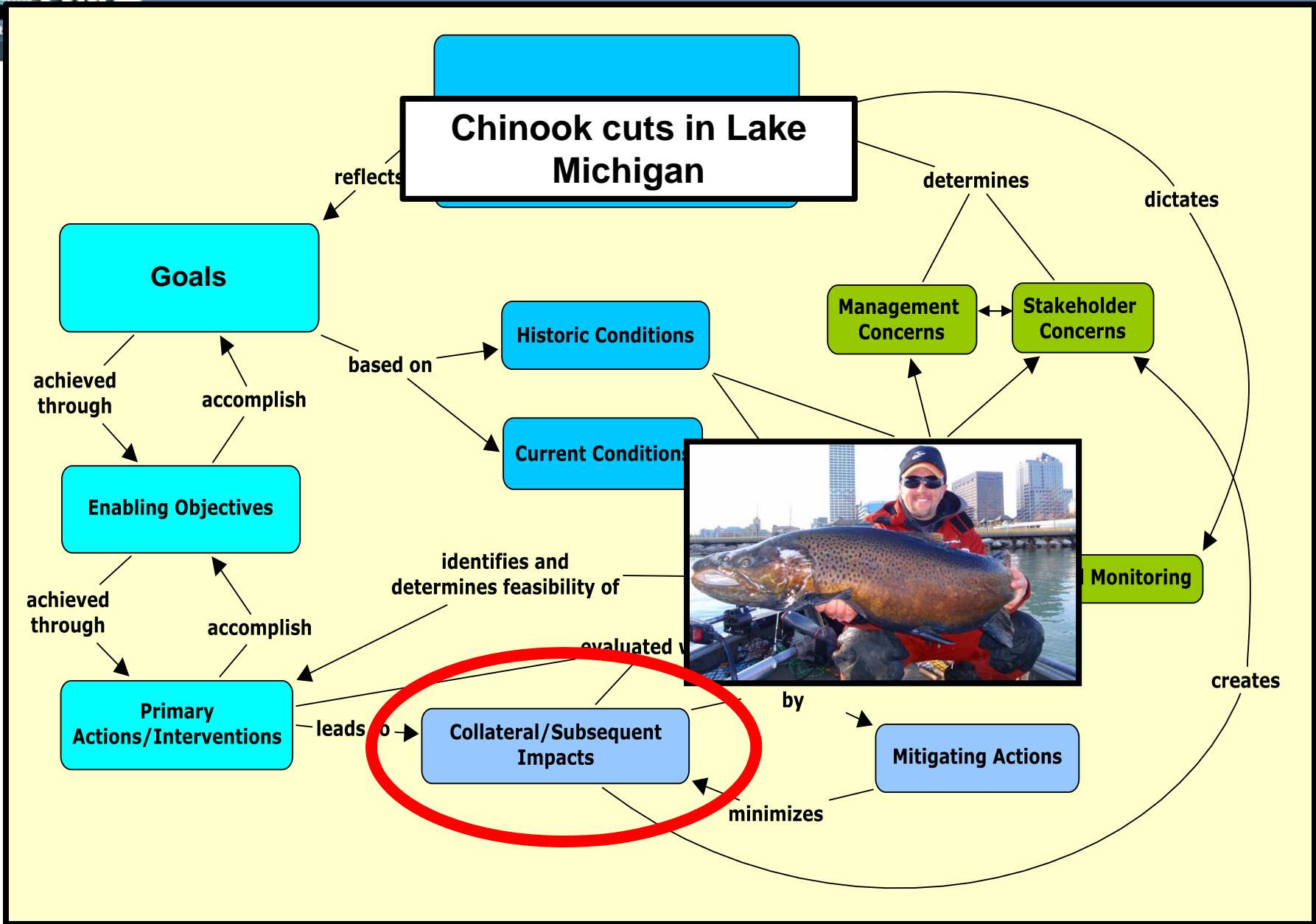


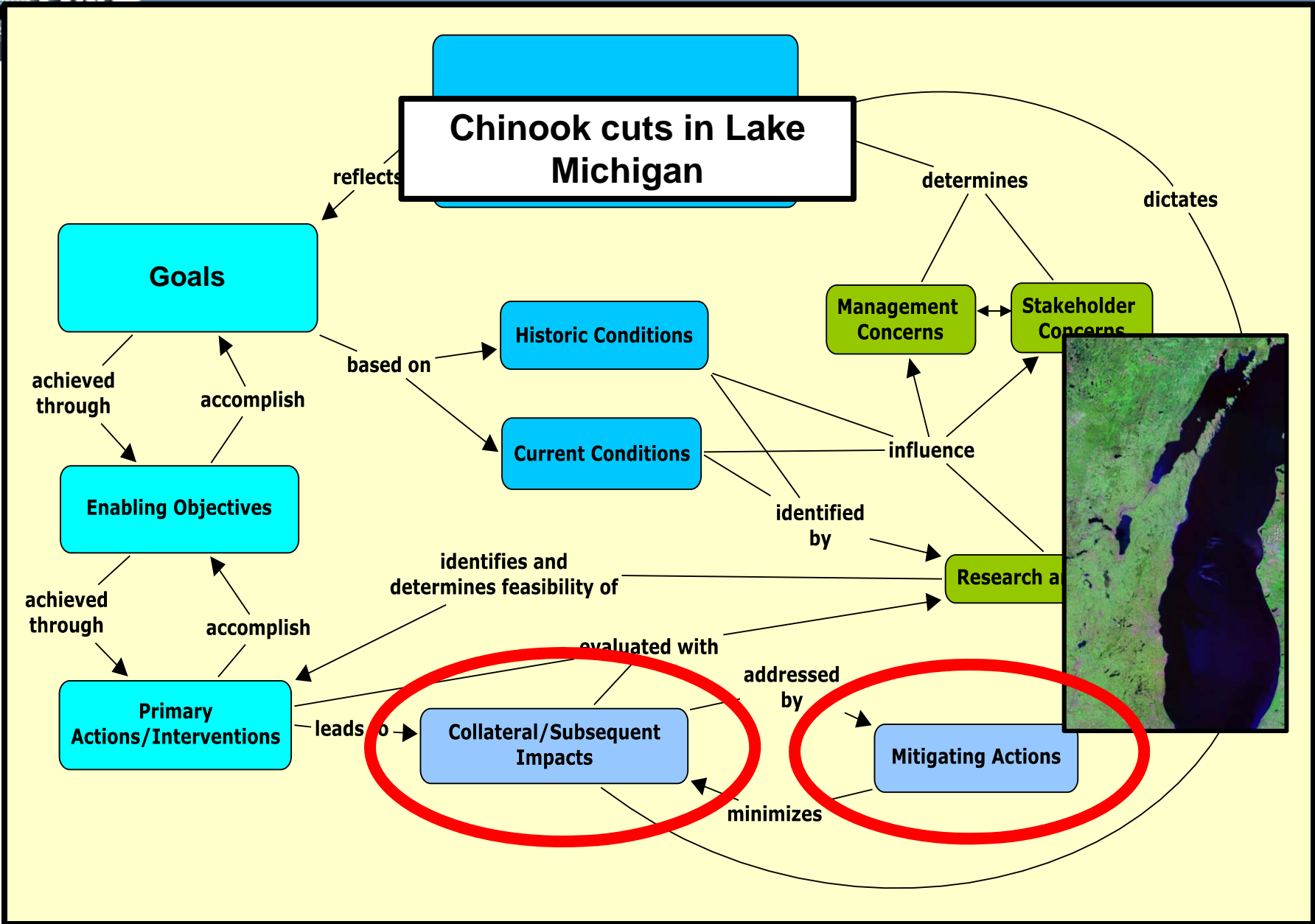












LSFMP 1988 - 1998

Goals:

- Manage for a diverse, multi-species commercial fishery to allow an optimum sustained harvests.
- Manage for a diverse, year-round, multi-species sport fishery to allow an optimum sustained harvest and to provide a variety of angling opportunities.
- Manage for a diverse, multi-species tribal home-use fishery to allow an optimum sustained harvest.
- Manage for fish communities, based on foundations of stable self-sustaining stocks, consistent with the productive capacity of Lake Superior.
- Develop an economic analysis to assist in management decisions.
- Maintain, monitor, and enhance habitat quality.
- Increase control of sea lamprey over present levels.
- Increase and maintain safe, public fishing boat access.

LSFMP 1988 - 1998

Goals:

- Manage for a diverse, multi-species commercial fishery to allow an optimum sustained harvests.
- Manage for a diverse, year-round, multi-species sport fishery to allow an optimum sustained harvest and to provide a variety of angling opportunities.
- Manage for a diverse, multi-species tribal home-use fishery to allow an optimum sustained harvest.
- Manage for fish communities, based on foundations of stable self-sustaining stocks, consistent with the productive capacity of Lake Superior. **GOAL**
- Develop an economic analysis to assist in management decisions. Maintain, monitor, and enhance habitat quality.
- Increase control of sea lamprey over present levels.
- Increase and maintain safe, public fishing boat access.

LSFMP 1988 - 1998

Goals:

- Manage for a diverse, multi-species commercial fishery to allow an *optimum sustained harvests*. **GOAL/ENABLING OBJECTIVE**
- Manage for a diverse, year-round, multi-species sport fishery to allow an *optimum sustained harvest* and to provide a variety of angling opportunities. **GOAL/ENABLING OBJECTIVE**
- Manage for a diverse, multi-species tribal home-use fishery to allow an *optimum sustained harvest*. **GOAL/ENABLING OBJECTIVE**
- Manage for fish communities, based on foundations of stable self-sustaining stocks, consistent with the productive capacity of Lake Superior. **GOAL**
- Develop an economic analysis to assist in management decisions.
- Maintain, monitor, and enhance habitat quality.
- Increase control of sea lamprey over present levels.
- Increase and maintain safe, public fishing boat access.

LSFMP 1988 - 1998

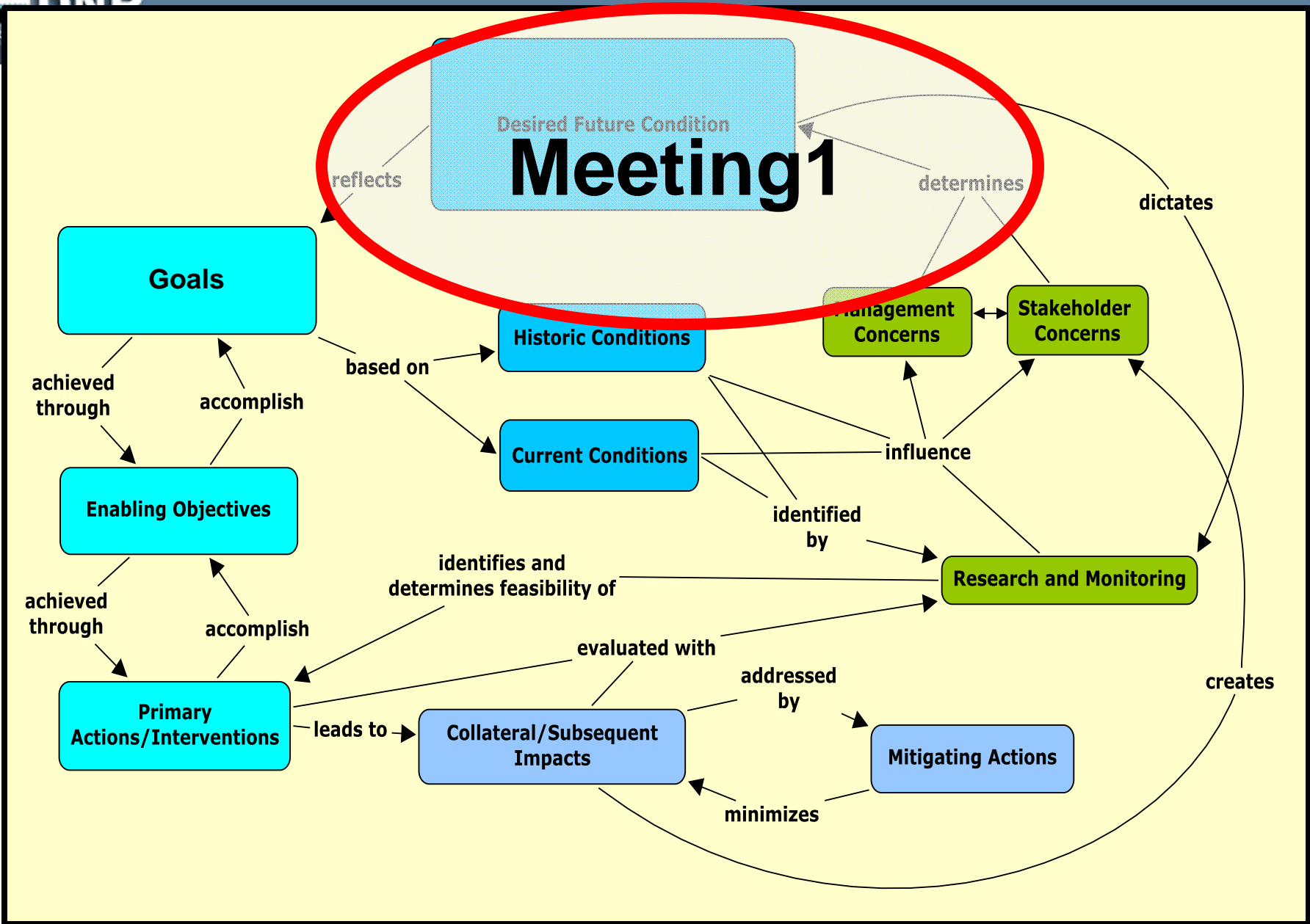
Goals:

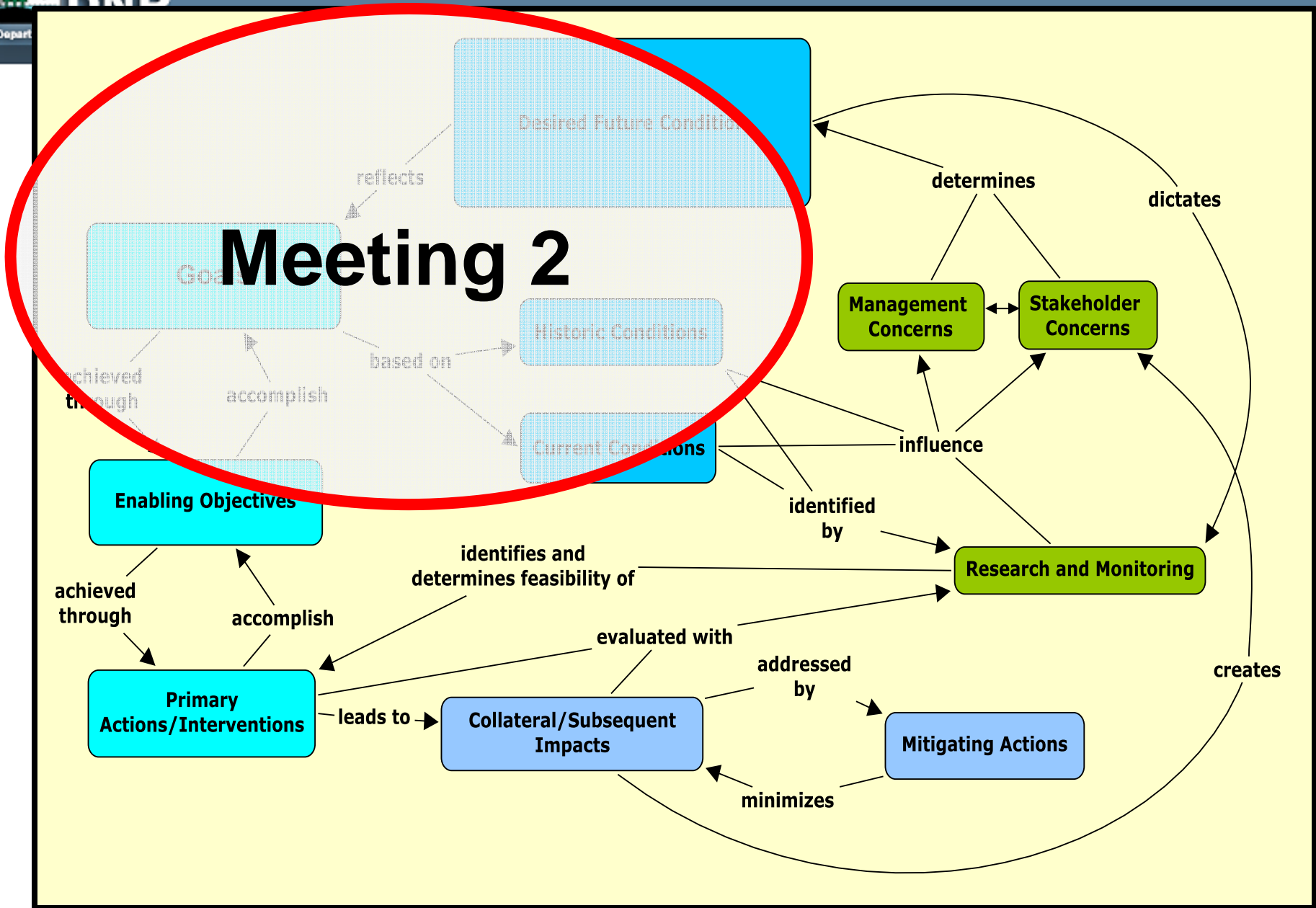
- Manage for a diverse, multi-species commercial fishery to allow an *optimum sustained harvests*. **GOAL/ENABLING OBJECTIVE**
- Manage for a diverse, year-round, multi-species sport fishery to allow an *optimum sustained harvest* and to provide a variety of angling opportunities. **GOAL/ENABLING OBJECTIVE**
- Manage for a diverse, multi-species tribal home-use fishery to allow an *optimum sustained harvest*. **GOAL/ENABLING OBJECTIVE**
- Manage for fish communities, based on foundations of stable self-sustaining stocks, consistent with the productive capacity of Lake Superior. **GOAL**
- Develop an economic analysis to assist in management decisions.
- Maintain, monitor, and enhance habitat quality. **PRIMARY ACTION**
- Increase control of sea lamprey over present levels. **PRIMARY ACTION**
- Increase and maintain safe, public fishing boat access. **PRIMARY ACTION**

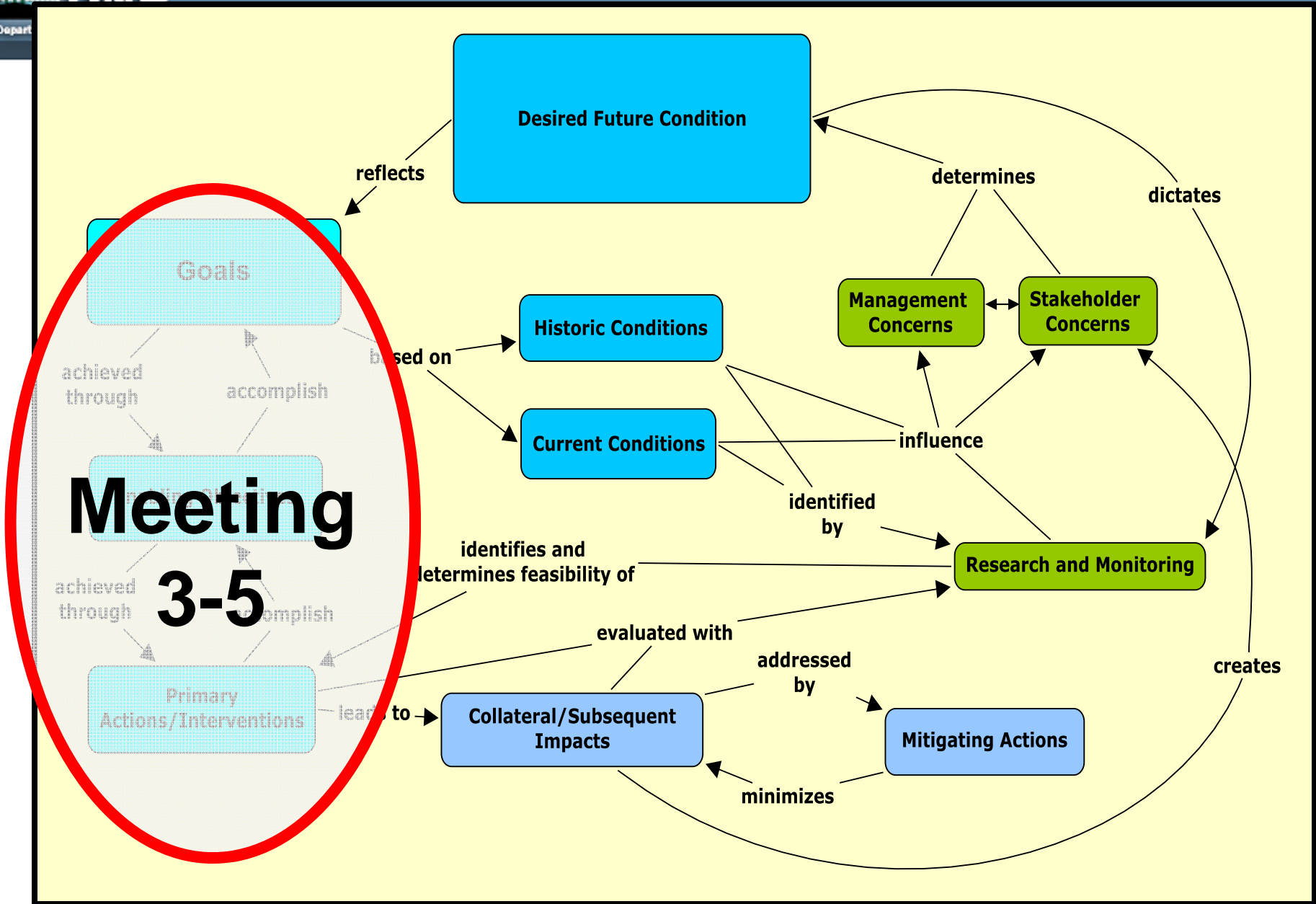
LSFMP 1988 - 1998

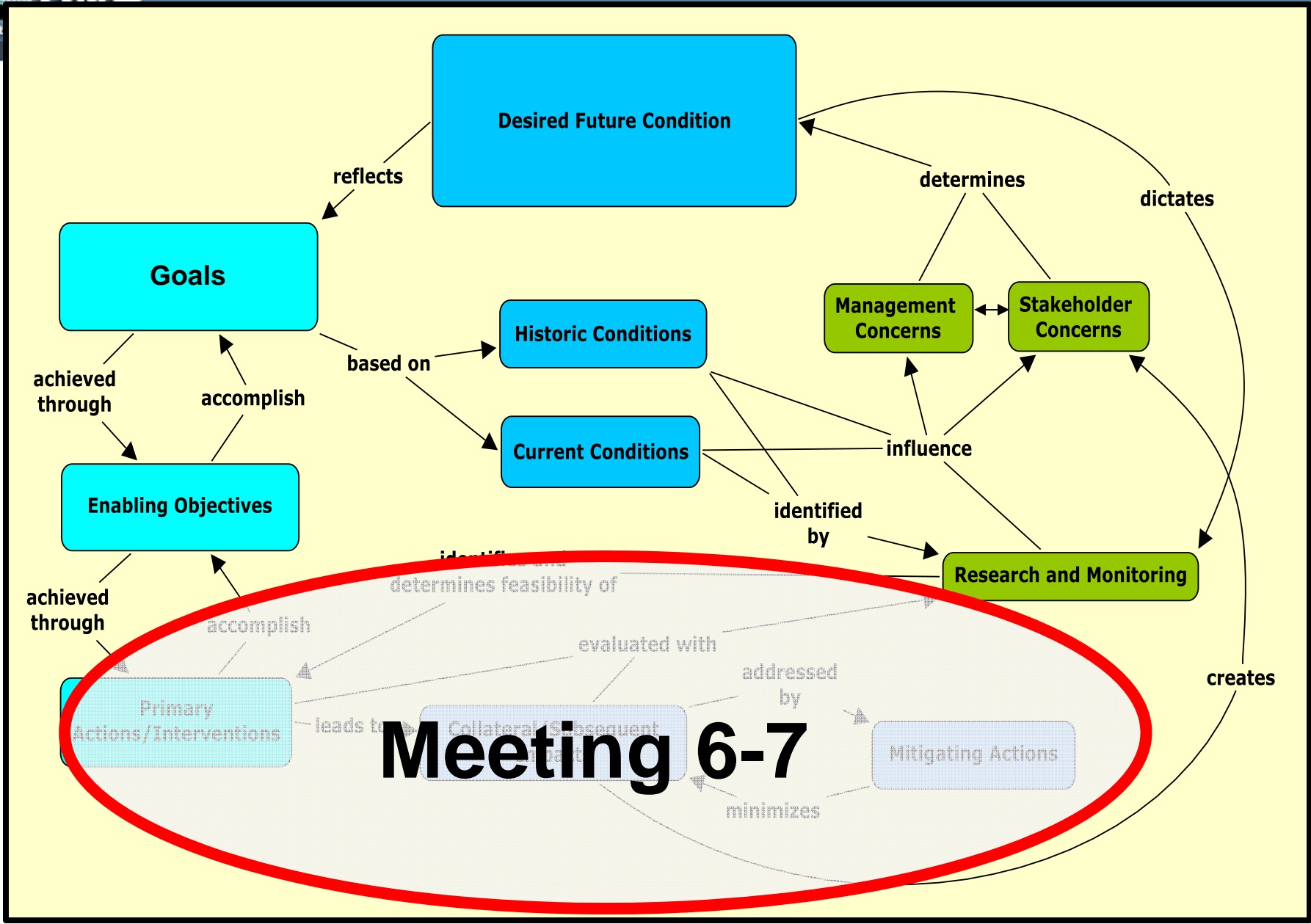
Goals:

- Manage for a diverse, multi-species commercial fishery to allow an *optimum sustained harvests*. **GOAL/ENABLING OBJECTIVE**
- Manage for a diverse, year-round, multi-species sport fishery to allow an *optimum sustained harvest* and to provide a variety of angling opportunities. **GOAL/ENABLING OBJECTIVE**
- Manage for a diverse, multi-species tribal home-use fishery to allow an *optimum sustained harvest*. **GOAL/ENABLING OBJECTIVE**
- Manage for fish communities, based on foundations of stable self-sustaining stocks, consistent with the productive capacity of Lake Superior. **GOAL**
- Develop an economic analysis to assist in management decisions. **RESEARCH AND MONITORING**
- Maintain, monitor, and enhance habitat quality. **PRIMARY ACTION**
- Increase control of sea lamprey over present levels. **PRIMARY ACTION**
- Increase and maintain safe, public fishing boat access. **PRIMARY ACTION**











Management Plan Structure

- Species-based
 - MN Lake Superior Fisheries Management Plan
 - Lake Superior Fish Community Objectives (GLFC)
- Fishery-based
 - WI Lake Michigan Fisheries Management Plan
 - WI Lake Superior Fisheries Management Plan

Desired future conditions

- *To protect the Lake Superior ecosystem, rehabilitate and protect its watershed, and manage for a diverse, stable, self-sustaining fish community that provides recreational, commercial and tribal fishing opportunities. (MN – Lake Superior)*
- *To rehabilitate and maintain a diverse, healthy, and self-sustaining fish community, dominated by indigenous species and supporting sustainable fisheries. (FCO)*
- *The goal of fish management is to provide opportunities for the optimum use and enjoyment of Wisconsin's aquatic resources, both sport and commercial. A healthy and diverse environment is essential to meet this goal and shall be provided through management programs. (WI – Lake Superior).*

Discussion and Comments

Thoughts on how to structure plan?

Desired future condition?



Homework:

What is important to your organization?

What are your members concerns?



Things to consider when identifying a good objective:

Attributes:

S—Specific

M—Measurable

A—Attainable

R—Relevant

T—Time-bound

Examples

Weak: I will be healthier.

Strong: I will exercise 3 times a week for 30 minutes or more. I will eat vegetables at 2 meals a day.

Things to consider when identifying a good objective:

Attributes:

- S**—Specific
- M**—Measurable
- A**—Attainable
- R**—Relevant
- T**—Time-bound

Socio-Ecological System

- Ecosystem
- Habitat
- Fish populations
- Fishery
- Economic value
- Aesthetic value
- Social value

Future Meeting Dates and Locations

???



Next steps:

- Visit website for more information:
 - Search for “Lake Superior Fisheries Management” on WDNR website to find link for “Lake Superior Fisheries Management Plan”
- Collect initial comments via:
 - Mail Brad Ray, 141 S. Third Street, Bayfield, WI 54814
 - Email (dnrlakesuperiorplan@wisconsin.gov)