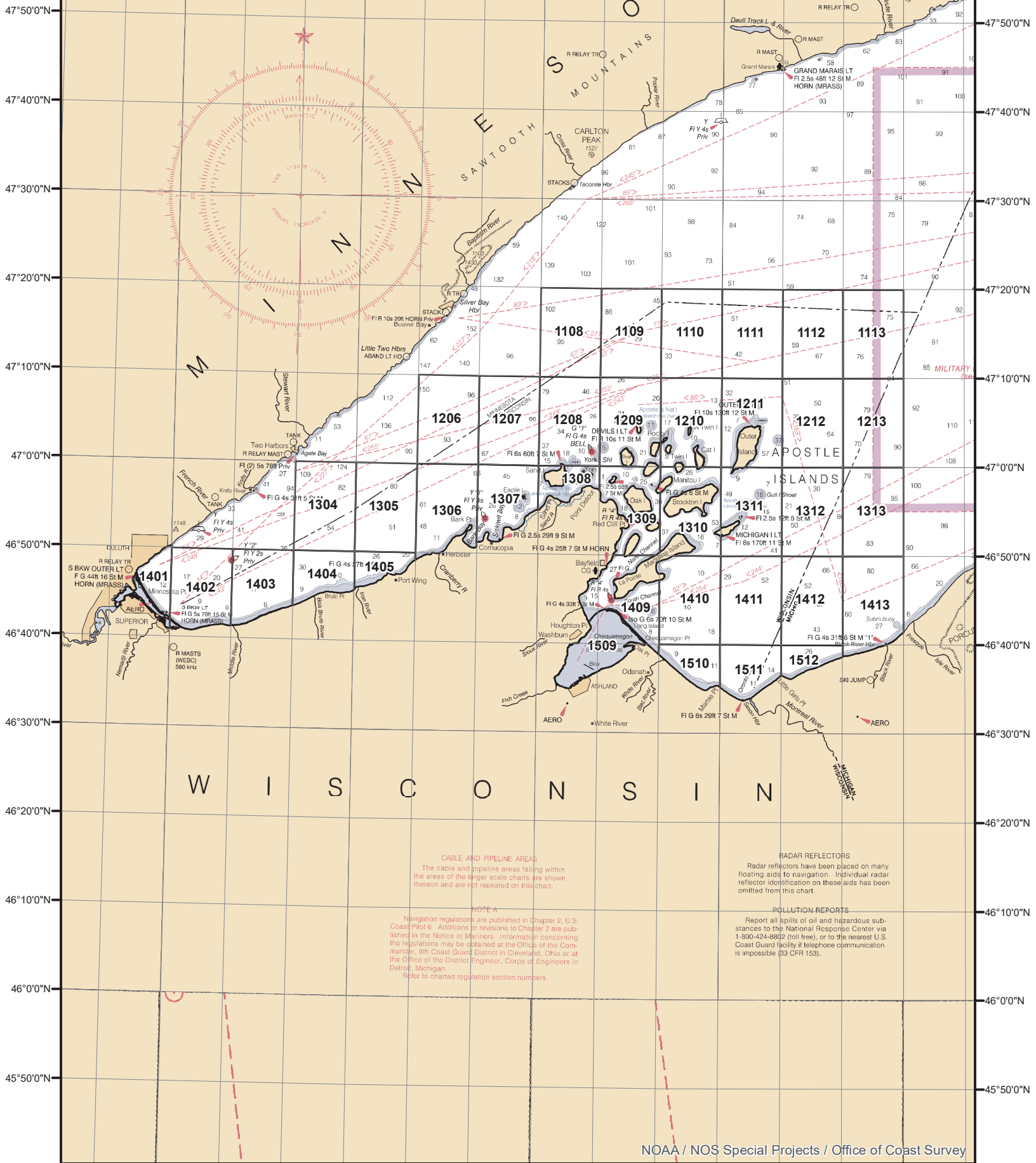


92°20'0"W 92°10'0"W 92°0'0"W 91°50'0"W 91°40'0"W 91°30'0"W 91°20'0"W 91°10'0"W 91°0'0"W 90°50'0"W 90°40'0"W 90°30'0"W 90°20'0"W 90°10'0"W 90°0'0"W 89°50'0"W

# Lake Superior GRID Reference



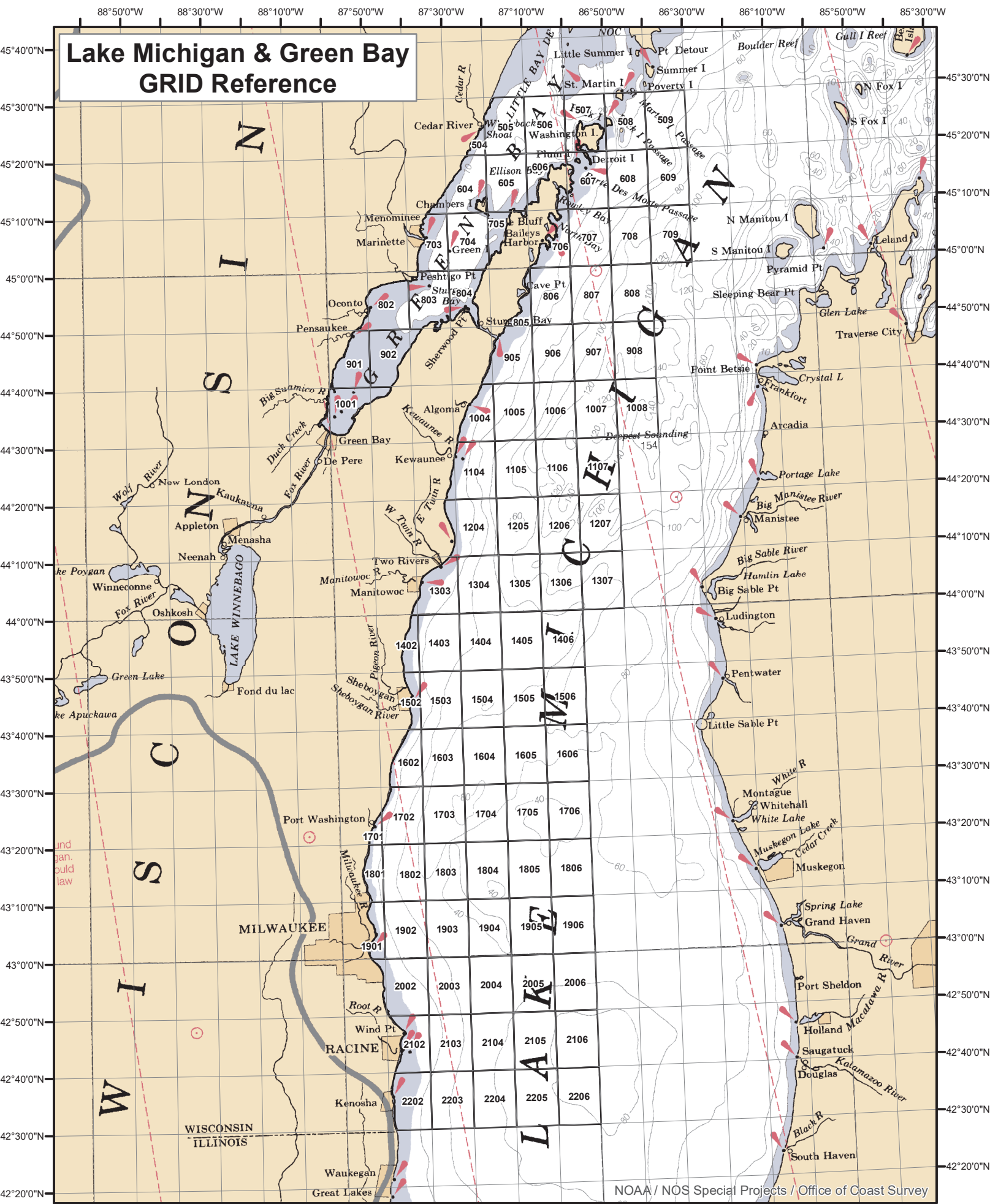
**CABLE AND PIPELINE AREAS**  
The cable and pipeline areas falling within the areas of the larger scale charts are shown thereon and are not repeated on this chart.

**NOTE A**  
Navigation regulations are published in Chapter 2, U.S. Coast Pilot 6. Additions or revisions to Chapter 2 are published in the Notice to Mariners. Information concerning the regulations may be obtained at the Office of the Commander, 9th Coast Guard District in Cleveland, Ohio or at the Office of the District Engineer, Corps of Engineers in Detroit, Michigan.  
Refer to charted regulation section numbers.

**RADAR REFLECTORS**  
Radar reflectors have been placed on many floating aids to navigation. Individual radar reflector identification on these aids has been omitted from this chart.

**POLLUTION REPORTS**  
Report all spills of oil and hazardous substances to the National Response Center via 1-800-424-8862 (toll free), or to the nearest U.S. Coast Guard facility if telephone communication is impossible (33 CFR 153).

# Lake Michigan & Green Bay GRID Reference



NOAA / NOS Special Projects / Office of Coast Survey