

YEAR	LOCATION	FIN CLIP	NUMBER	STRAIN
BROWN TROUT				
2015	Kewaunee River	ALP	35,446	Seeforellen
2015	Root River	ALP	42,743	Seeforellen
2015	Sheboygan River	ALP	34,884	Seeforellen
2015	Sturgeon Bay	ALP	29,630	Seeforellen
2016	Menominee River	ARP	28,884	Seeforellen
2016	Kewaunee River	ARP	33,525	Seeforellen
2016	Sheboygan River	ARP	24,533	Seeforellen
2016	Root River	ARP	31,690	Seeforellen
2017	All Wisconsin Sites	A	347,733	Seeforellen
2018	All Wisconsin Sites	A	390,955	Seeforellen
2019	All Wisconsin Sites	A	408,270	Seeforellen

CHINOOK SALMON

2017	Kewaunee River	A-CWT	45,893	Lake Michigan
2017	Root River	A-CWT	74,861	Lake Michigan
2017	Strawberry Creek	ARV	30,000	Lake Michigan
2017	All other WI sites	A	662,632	Lake Michigan
2018	Kewaunee River	A-CWT	24,305	Lake Michigan
2018	Root River	A-CWT	51,383	Lake Michigan
2018	Root River – net pen	A-CWT	32,748	Lake Michigan
2018	Strawberry Creek	ALV	30,000	Lake Michigan
2018	All other WI sites	A	706,118	Lake Michigan
2019	Strawberry Creek	ABV	30,000	Lake Michigan
2019	All other WI sites	A	798,507	Lake Michigan

YEAR	LOCATION	FIN CLIP	NUMBER	STRAIN
LAKE TROUT				
2008	Midlake Refuge	RV	775,297	
2008	Nearshore Wisconsin sites	RP	240,216	
2009	All Wisconsin Sites	RP	930,671	
2010	All Wisconsin Sites	LPRV	738,549	
2011	All Wisconsin Sites	A-CWT	912,909	
2012	All Wisconsin Sites	A-CWT	703,349	
2013	All Wisconsin Sites	A-CWT	819,360	
2014	All Wisconsin Sites	A-CWT	824,530	
2015	All Wisconsin Sites	A-CWT	809,103	
2016	All Wisconsin Sites	A-CWT	712,377	
2017	Sheboygan Reef	A-CWT	298,264	
2018	Sheboygan Reef	A-CWT	360,985	
2019	Sheboygan Reef	A-CWT	372,740	

* Includes fish stocked in MI waters.

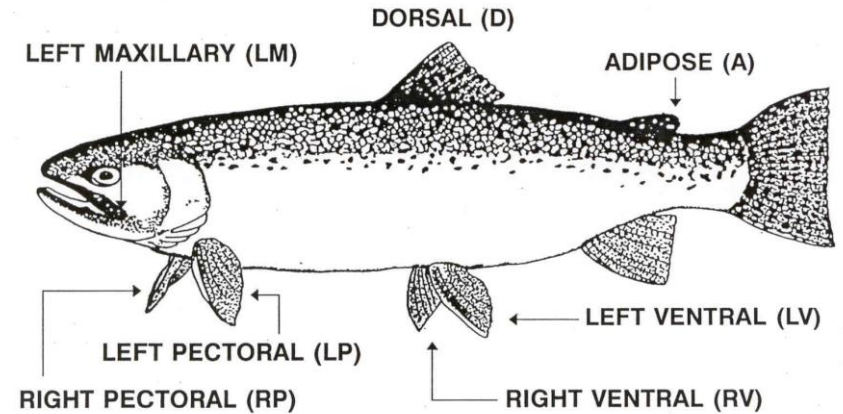
Many lake trout, some Chinook salmon, and many steelhead have been adipose clipped to indicate they carry a tiny coded wire tag (CWT) in their snout. A trained technician must find and decode these tags to determine stocking information. This information is important for the future management of Lake Michigan. If you would like to donate the snout from your fish, please call one of the DNR field stations listed below and they will give you instructions on how to collect the necessary information and location to drop off the snout.

Peshtigo: (715) 582-5052
 Sturgeon Bay: (920) 746-5112
 Green Bay: (920) 662-5480
 Milwaukee: (414) 416-3085

Wisconsin Department of Natural Resources provides equal opportunity in its employment, programs, services, and functions under an Affirmative Action Plan. If you have any questions, please write to Equal Opportunity Office, Department of Interior, Washington, DC 20240. This publication can be made available in alternative formats (large print, Braille, audiotape, etc.) upon request. Please call (414) 416-3085 for more information.

**WISCONSIN LAKE MICHIGAN FIN CLIP SUMMARY 2008-2019
MARKED FISH ONLY**

YEAR	LOCATION	FIN CLIP	NUMBER	STRAIN
RAINBOW (STEELHEAD) TROUT				
2014	Kewaunee River	ALM	35,029	Chambers Creek
2014	Root River	ALM	27,188	Chambers Creek
2014	Kewaunee River	ARV	35,440	Ganaraska
2014	Root River	ARV	29,535	Ganaraska
2015	Kewaunee River	LMLV	35,030	Chambers Creek
2015	Menomonee River	LMLV	13,429	Chambers Creek
2015	Root River	LMLV	31,389	Chambers Creek
2015	Kewaunee River	BV	34,991	Ganaraska
2015	Root River	BV	31,459	Ganaraska
2016	Heins Creek	LM	1,752	Chambers Creek
2016	Whitefish Bay Creek	LM	3,528	Chambers Creek
2016	Hibbard Creek	LM	1,778	Chambers Creek
2016	Stony Creek	LM	1,961	Chambers Creek
2016	Kewaunee River	LM	33,062	Chambers Creek
2016	Fischer Creek	LM	2,013	Chambers Creek
2016	Port Washington	LM	2,000	Chambers Creek
2016	Sheboygan River	LM	4,462	Chambers Creek
2016	Root River	LM	27,134	Chambers Creek
2016	Hibbard Creek	ALV	2,459	Ganaraska
2016	Stony Creek	ALV	2,428	Ganaraska
2016	Kewaunee River	ALV	36,721	Ganaraska
2016	Fischer Creek	ALV	2,383	Ganaraska
2016	Sheboygan River	ALV	4,848	Ganaraska
2016	Port Washington	ALV	2,387	Ganaraska
2016	Root River	ALV	28,218	Ganaraska
2017	Hibbard Creek	ALM	2,264	Chambers Creek
2017	Stony Creek	ALM	2,219	Chambers Creek
2017	Kewaunee River	ALM	34,808	Chambers Creek
2017	Fischer Creek	ALM	2,225	Chambers Creek
2017	Sheboygan River	ALM	5,098	Chambers Creek
2017	Sauk Creek	ALM	2,223	Chambers Creek
2017	Root River	ALM	28,085	Chambers Creek
2017	Hibbard Creek	ARV	2,394	Ganaraska
2017	Stony Creek	ARV	2,419	Ganaraska
2017	Kewaunee River	ARV	35,015	Ganaraska
2017	Fischer Creek	ARV	2,426	Ganaraska
2017	Sheboygan River	ARV	4,888	Ganaraska
2017	Sauk Creek	ARV	2,385	Ganaraska
2017	Root River	ARV	27,048	Ganaraska
2018	Kewaunee River	ALM	33,653	Chambers Creek
2018	Root River	ALM	30,293	Chambers Creek
2018	Kewaunee River	ARV	31,138	Ganaraska
2018	Root River	ARV	26,252	Ganaraska
2018	Kewaunee River	ARM	36,599	Skamania
2018	Root River	ARM	34,027	Skamania
2018	All other sites/strains	A-CWT	249,927	All strains
2019	Kewaunee River	ALM	34,660	Chambers Creek
2019	Root River	ALM	32,034	Chambers Creek
2019	Kewaunee River	ALV	34,675	Ganaraska
2019	Root River	ALV	33,884	Ganaraska
2019	Kewaunee River	ARM	34,968	Skamania
2019	Root River	ARM	34,511	Skamania
2019	All other sites/strains	A-CWT	239,282	All strains



These fin clip patterns are for the Lake Michigan and Green Bay waters of the State of Wisconsin only. Trout and salmon with other fin clip patterns can originate from other states and would be considered “strays” in Wisconsin waters. Fin regeneration makes some clips difficult to see. Note: These are not total numbers of trout and salmon stocked, only those that have been fin clipped. For non-specific locations listed in the summary please see the latest Wisconsin’s Lake Michigan Salmonid Stocking Summary (PUB-FH-828 2020).

*Tagged fish: Your cooperation in returning these tags to the address below or the address listed on the tag, along with the species of fish, length, weight (if known), date and location caught will be greatly appreciated. This information will help us make the Lake Michigan fishery even better.

*When releasing a tagged fish, please leave the tag in place.

For more information on tagged fish please go to the WDNR web site at: dnr.wi.gov and search for ‘tagged fish’.

DNR – Lake Michigan Work Unit
600 E. Greenfield Avenue
Milwaukee, WI 53204
(414) 416-3085



PUB-FH-831 2020

