

NM-088 Shawano Docs Trail

Requested Trail Maintenance Funding

04/4/22

Listed according to Trail Ranking Chart attached.

- 1) Docs Trail: This trail is 5.3 miles in length. Connects corridor 547 with 20, following County RD S. This segment is not ATV funded. No development dollars are being requested.
- 2) Shortcut Trail: This trail is 1.7 miles in length but cuts off miles of trail for users getting around the town of Bonduel. It connects off the Mt Bay State Trail. This segment is not ATV funded. No development dollars are being requested.
- 3) Tilleda Loop: This trail is 7 miles in length, it is a very scenic route meeting up with corridor 9. This segment is not ATV funded. No development dollars are being requested.
- 4) Mountain Bay – Gresham: From the Mountain Bay trail where it junctions with a number of trails north into the Village of Gresham. This trail is not ATV funded. It is 1.4 miles. No development dollars are being requested.
- 5) T Trail – This trail is 1.5 miles, connects MT Bay State Trail with access to fuel and amenities, not ATV funded, no development dollars are being requested.

New Trail Ranking and Certification Worksheet

County: Shawano Segment Name/Trail #: Doc's Trail
Date of Application: 4/15/22 Miles Requested: 5.3

Qualifications – All items in this worksheet must be completed for new miles request, and submitted with a copy of the Motorized Recreation Grant Application 8700-159 for each new trail. Each trail must be submitted separately. All items in this section must be completed for valid new trail maintenance funding request – incomplete applications will be denied.

Any rehabilitation funding requests should be included at this time on form 8700-159. Trails must be in the funded system for at least 10 years before they are eligible to receive rehab grants, so it is important to include rehabilitation needs now. (NR 50.09 (4) (g))

Gateways questions: Provide justification for selection below.

- 1. Trail provides primary access route through a county and connects with another county's trails.
- 2. Trail provides access from population centers to main access trail(s).
- 3. Trail supports a high volume of use.
- 4. Trail is separate from the road surface, marked and groomed as a snowmobile trail. Plowed roads do not qualify as a funded off-road trail. (s. 350.01 (16) and (17) Wis. Stats.)

- Maps attached (All are required)
- Provide GIS file (shapefile, etc) of county trail system with the requested trail segments included.
 - Provide countywide trail system map (printed/PDF) with the requested trail segments identified. (Map should show how the requested new mile segment fits into the trail system, and what it connects to.)
 - Provide aerial/topographical map (printed/PDF) for each segment. (Map should show a more detailed view of the trail, but still clear on trail location and connections).

- I certify that this trail meets or will meet all trail requirements in chs. 23 & 350, Wis. Stats. and ch. NR 50, Wis. Admin. Code
- 1. Minimum graded width for one-way trails is 6 feet and maximum 8 feet.
 - 2. Minimum graded width for two-way trails is 10 feet and maximum 12 feet.
 - 3. Minimum turning radius is 25 feet.
 - 4. Minimum cleared height above trail is 10 feet.
 - 5. Sustained grades and slopes will be a maximum of 25%.
 - 6. Approved, fully reflectorized snowmobile signs must be used.
 - 7. Snowmobile trails shall not be routed over bodies of water. If stream crossings make bridging necessary, bridges should be at least 8 feet wide. If the bridge is located on an abandoned railroad grade, the bridge shall be a minimum of 10 feet wide free from obstruction.

Justification (Required) – Provide narrative description of the new trail with explanation for gateway qualification checked (#1, 2 or 3 above).

Trail exceeds heavy use going to Doc's restaurant.

Water Crossings (Required) - Does the requested trail segment include any bridges, culverts or water crossings? If so, Describe. If not, indicate none. *Bridge structures should be added to the county's snowmobile bridge inventory if not already included.*

3 culverts crossing unnamed creeks.

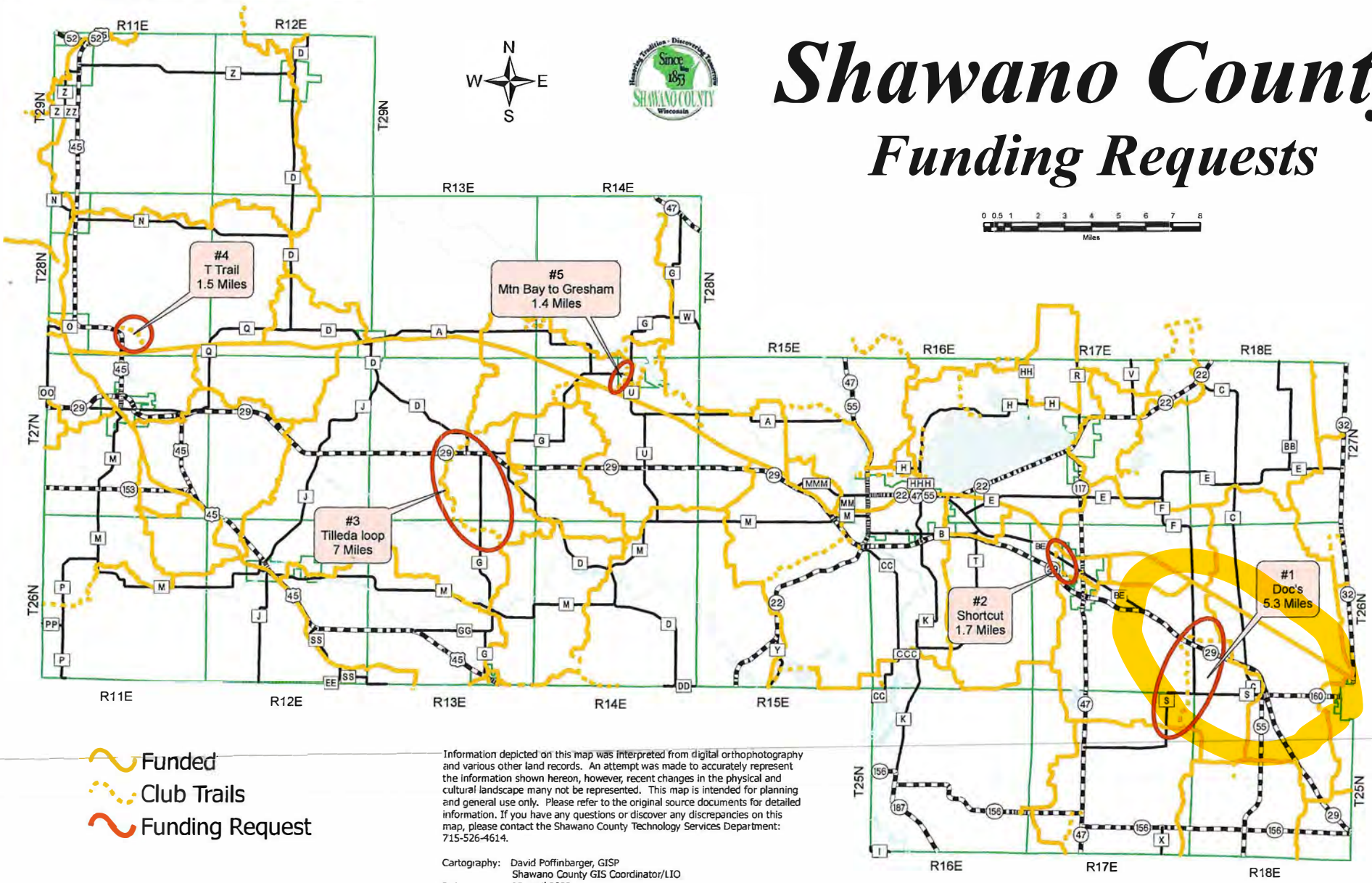
Ranking

	Category	Possible Points	Actual Points
1.	Trail Longevity (<i>If multiple scenarios along the trail, lowest point situation applies. County must provide copy of easements/LUAs with application if >0 pnts, if not on public land.</i>)	Max points: 3	
	Trail segment is located on public land or private land with permanent deeded easement.	3	
	Trail segment on private lands with land-use agreement (LUA) of 10 years or more.	2	
	Trail segment is on private lands with LUA of 5 to 9 years.	1	
	LUA of less than 5 years.	0	0
2.	Trail System (<i>choose one</i>)	Max points: 3	
	Trail segment connects <u>directly</u> to one or more neighboring county or state trails.	3	
	Trail closes a gap between two existing funded trail segments, or extends existing funded trail 10 or more miles – excludes routes.	2	XXX
	Trail segment is a part of the basic county trail system.	1	1
	Trail is isolated and does not connect to the county trail system.	0	
3.	The trail segment is in the following area of mean annual snowfall <u>Mean Snowfall Map per County</u> (Source: Midwestern Climate Center)	Max points: 3	
	Greater than 60 inches	3	
	48 – 60 inches	2	2
	Less than 48 inches	1	
4.	The ratio of miles of trail to total square miles of land within the county: <u>Snowmobile Trail Area Ratio per County</u>	Max points: 3	
	The ratio is within the grouping 01% - 30%	3	
	The ratio is within the grouping 31% - 40%	2	
	The ratio is within the grouping 41% - 50%	1	
	The ratio is in a grouping of over 50%	0	0
5.	Trail segment will be groomed with the following equipment. (<i>choose one</i>)	Max points: 2	
	Class A-1, A-2 includes AAA and AA	2	2
	Class A-3, A-4 includes AAA and AA	1	
	Class B or C	0	
6.	County snowmobile trail coordinator priority points. Note: County is allowed 2 points maximum for ALL trail segments submitted.	Max points: 2	
	High priority.	2	
	Medium priority.	1	
	No priority.	0	
7.	Deductions if trail segment contains any of the following: (<i>check all that apply</i>)	Max deduction: -8	
	New bridge, major bridge rehab or major trail rehab	-3	
	Trail segment is parallel (within 5 miles) to another funded segment	-3	-3
	Trail runs to a body of water. (<i>no deduction for use of a bridge to cross</i>)	-2	
		(Maximum Points: 16) TOTAL	XXX 2

Please verify that all sections of this form have been completed, and all required attachments included prior to submittal. Incomplete applications will be denied.

Shawano County

Funding Requests

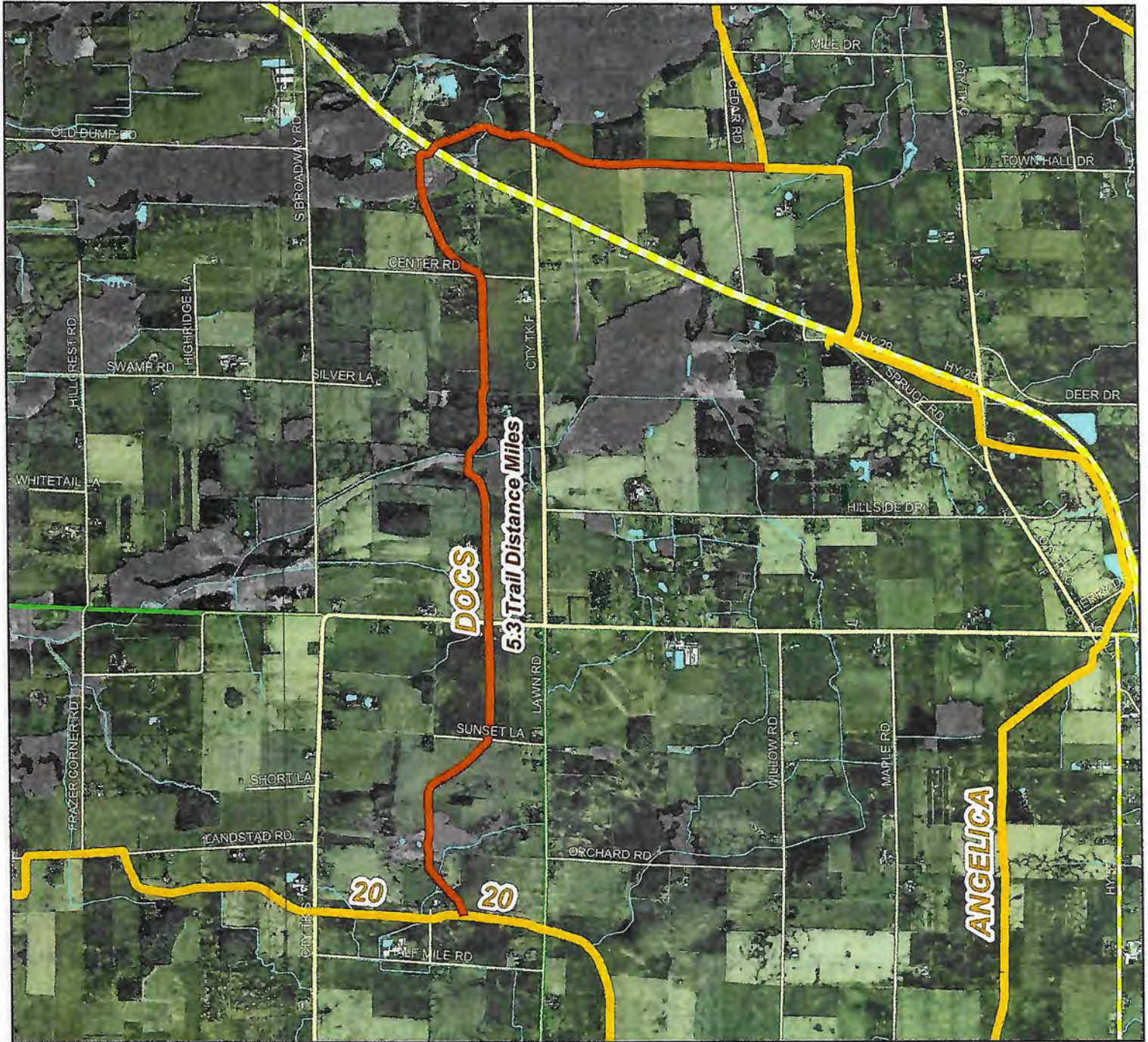


- Funded
- Club Trails
- Funding Request

Information depicted on this map was interpreted from digital orthophotography and various other land records. An attempt was made to accurately represent the information shown hereon, however, recent changes in the physical and cultural landscape may not be represented. This map is intended for planning and general use only. Please refer to the original source documents for detailed information. If you have any questions or discover any discrepancies on this map, please contact the Shawano County Technology Services Department: 715-526-4614.

Cartography: David Poffinbarger, GISP
 Shawano County GIS Coordinator/LIO
 Date: 05 April 2022

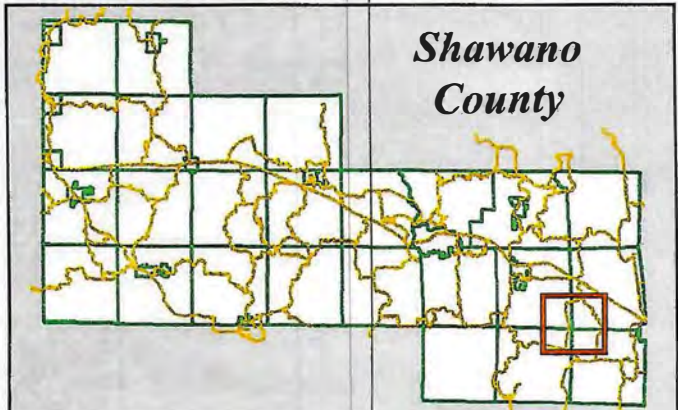
Requested Trail Maintenance Funding - Docs Trail



Docs
5.3 Trail Distance Miles

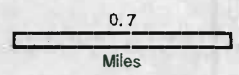
ANGELICA

20 20



**Shawano
County**

- Funding Requests
- Funded
- Club Trails
- Federal/State Highways
- County Highways
- Town/Municipal Roads
- Private Roads
- Railroads
- Municipalities
- Waterbodies
- Wetlands



Information depicted on this map was interpreted from digital orthophotography and various other land records. An attempt was made to accurately represent the information shown hereon, however, recent changes in the physical and cultural landscape many not be represented. This map is intended for planning and general use only. Please refer to the original source documents for detailed information. If you have any questions or discover any discrepancies on this map, please contact the Shawano County Technology Services Department: 715-526-4614.

Cartography: David Poffinbarger, GISP
Shawano County GIS Coordinator/Land Information Officer
Date: 23 April 2020