

New Trail Ranking and Certification Worksheet

County: Bayfield Segment Name/Trail #: Trail 1
 Date of Application: 4/4/2022 Miles Requested: 4.3

Qualifications – All items in this worksheet must be completed for new miles request, and submitted with a copy of the Motorized Recreation Grant Application 8700-159 for each new trail. Each trail must be submitted separately. All items in this section must be completed for valid new trail maintenance funding request – incomplete applications will be denied.

Any rehabilitation funding requests should be included at this time on form 8700-159. Trails must be in the funded system for at least 10 years before they are eligible to receive rehab grants, so it is important to include rehabilitation needs now. (NR 50.09 (4) (g))

Gateways questions: Provide justification for selection below.	
<ul style="list-style-type: none"> <input checked="" type="checkbox"/> 1. Trail provides primary access route through a county and connects with another county's trails. <input type="checkbox"/> 2. Trail provides access from population centers to main access trail(s). <input type="checkbox"/> 3. Trail supports a high volume of use. <input checked="" type="checkbox"/> 4. Trail is separate from the road surface, marked and groomed as a snowmobile trail. Plowed roads do not qualify as a funded off-road trail. (s. 350.01 (16) and (17) Wis. Stats.) 	
Maps attached <i>(All are required)</i>	<ul style="list-style-type: none"> <input checked="" type="checkbox"/> Provide GIS file (shapefile, etc) of county trail system with the requested trail segments included. <input checked="" type="checkbox"/> Provide countywide trail system map (printed/PDF) with the requested trail segments identified. <i>(Map should show how the requested new mile segment fits into the trail system, and what it connects to.)</i> <input checked="" type="checkbox"/> Provide aerial/topographical map (printed/PDF) for each segment. <i>(Map should show a more detailed view of the trail, but still clear on trail location and connections).</i>
<ul style="list-style-type: none"> <input checked="" type="checkbox"/> I certify that this trail meets or will meet all trail requirements in chs. 23 & 350, Wis. Stats. and ch. NR 50, Wis. Admin. Code <ul style="list-style-type: none"> 1. Minimum graded width for one-way trails is 6 feet and maximum 8 feet. 2. Minimum graded width for two-way trails is 10 feet and maximum 12 feet. 3. Minimum turning radius is 25 feet. 4. Minimum cleared height above trail is 10 feet. 5. Sustained grades and slopes will be a maximum of 25%. 6. Approved, fully reflectorized snowmobile signs must be used. 7. Snowmobile trails shall not be routed over bodies of water. If stream crossings make bridging necessary, bridges should be at least 8 feet wide. If the bridge is located on an abandoned railroad grade, the bridge shall be a minimum of 10 feet wide free from obstruction. 	
Justification <i>(Required)</i> – Provide narrative description of the new trail with explanation for gateway qualification checked (#1, 2 or 3 above).	
<p>This section of trail 1 has been a trail for a while, it is separate from the road surface and groomed and maintained as a snowmobile trail. This trail connects Bayfield County and Douglas County. This 4.3 miles is entirely in Douglas County. This has been discussed with the Douglas County coordinator and the nearest Douglas County club has no interest in maintaining this section of trail.</p>	

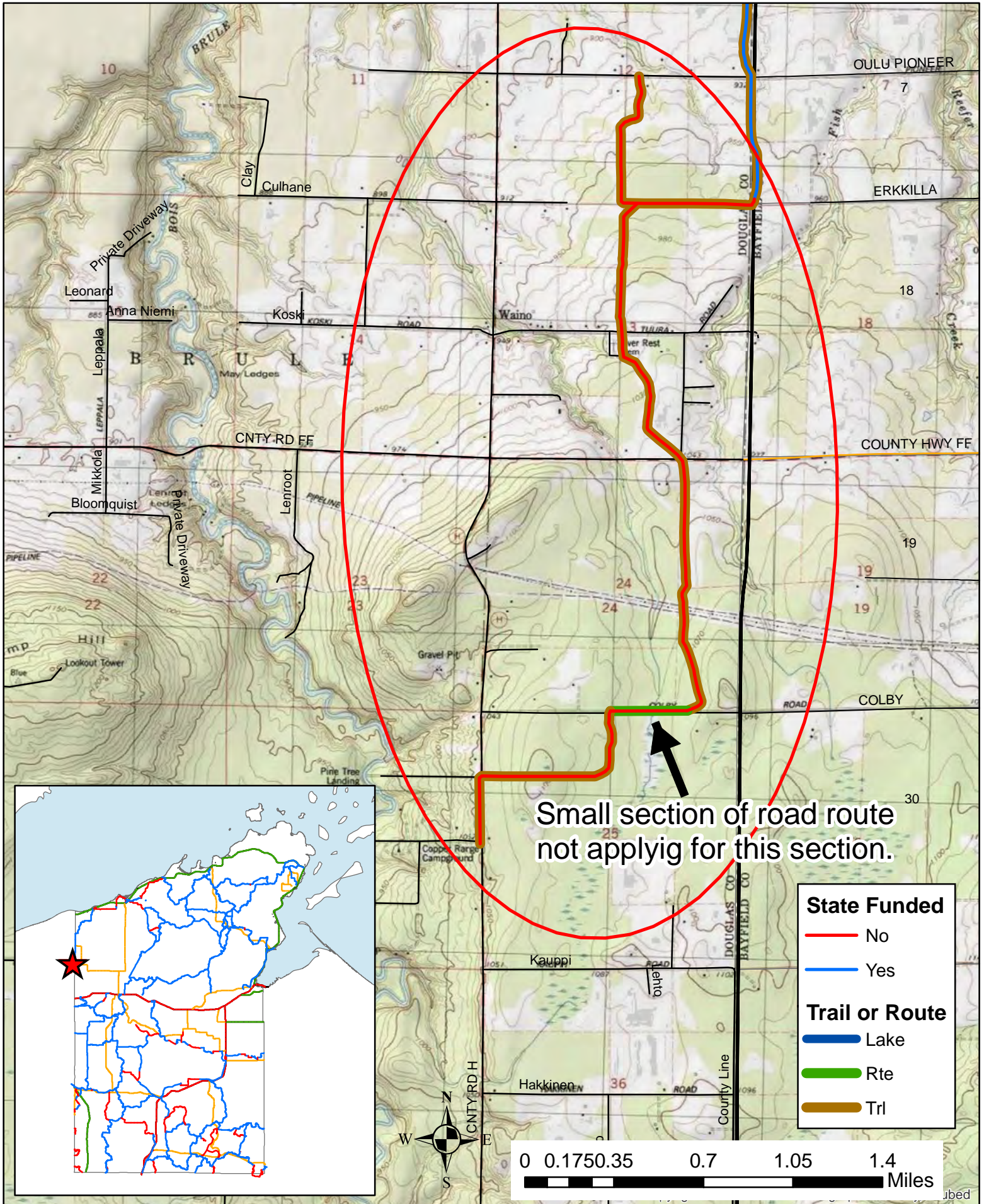
Water Crossings **(Required)** - Does the requested trail segment include any bridges, culverts or water crossings? If so, Describe. If not, indicate none. *Bridge structures should be added to the county's snowmobile bridge inventory if not already included.*

Ranking

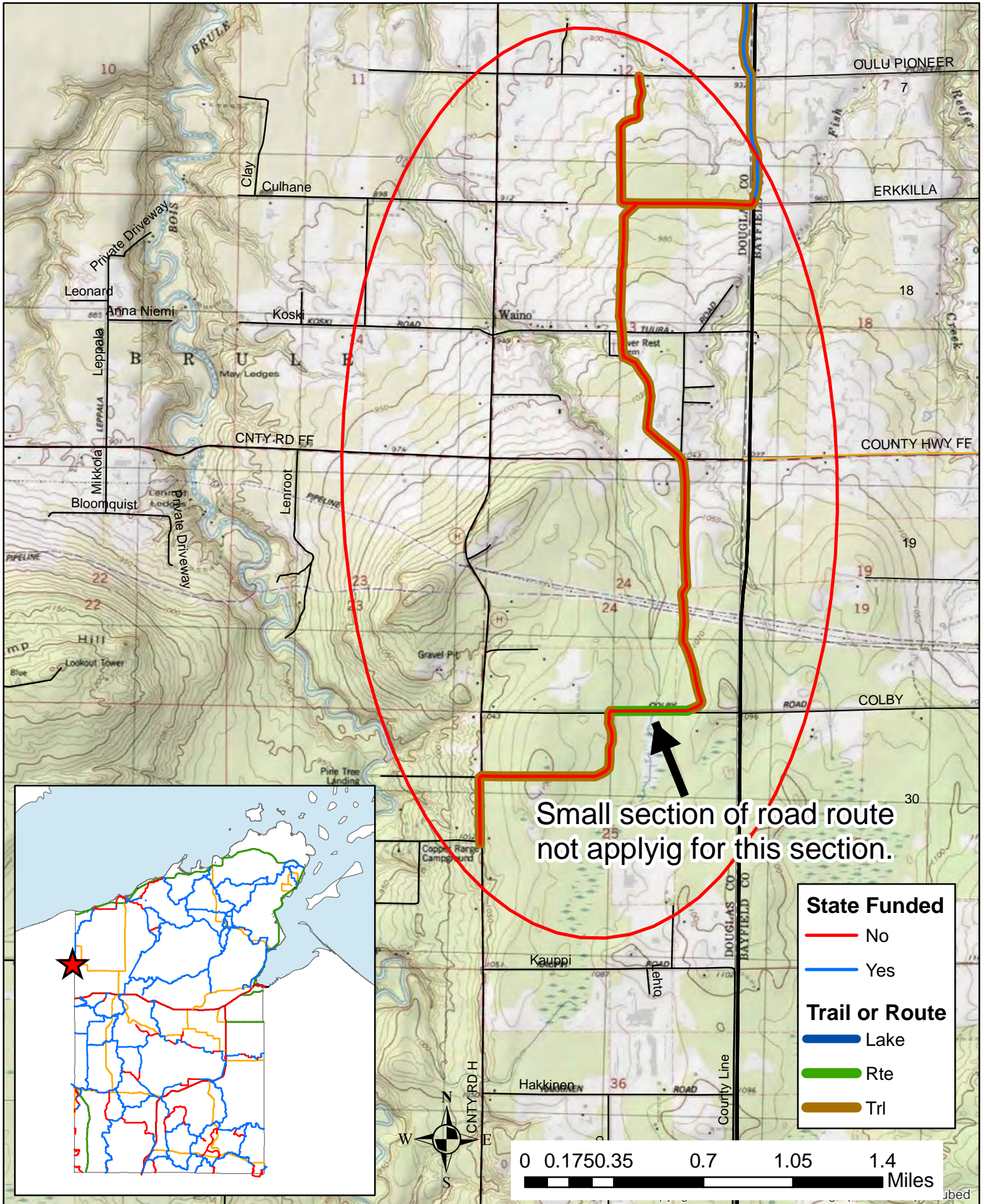
	Category	Possible Points	Actual Points
1.	Trail Longevity (<i>If multiple scenarios along the trail, lowest point situation applies. County must provide copy of easements/LUAs with application if >0 pnts, if not on public land.</i>)	Max points: 3	
	Trail segment is located on public land or private land with permanent deeded easement.	3	
	Trail segment on private lands with land-use agreement (LUA) of 10 years or more.	2	
	Trail segment is on private lands with LUA of 5 to 9 years.	1	
	LUA of less than 5 years.	0	0
2.	Trail System (<i>choose one</i>)	Max points: 3	
	Trail segment connects <u>directly</u> to one or more neighboring county or state trails.	3	3
	Trail closes a gap between two existing funded trail segments, or extends existing funded trail 10 or more miles – excludes routes.	2	
	Trail segment is a part of the basic county trail system.	1	
	Trail is isolated and does not connect to the county trail system.	0	
3.	The trail segment is in the following area of mean annual snowfall Mean Snowfall Map per County (Source: Midwestern Climate Center)	Max points: 3	
	Greater than 60 inches	3	3
	48 – 60 inches	2	
	Less than 48 inches	1	
4.	The ratio of miles of trail to total square miles of land within the county: Snowmobile Trail Area Ratio per County	Max points: 3	
	The ratio is within the grouping 01% - 30%	3	3
	The ratio is within the grouping 31% - 40%	2	
	The ratio is within the grouping 41% - 50%	1	
	The ratio is in a grouping of over 50%	0	
5.	Trail segment will be groomed with the following equipment. (<i>choose one</i>)	Max points: 2	
	Class A-1, A-2 includes AAA and AA	2	
	Class A-3, A-4 includes AAA and AA	1	1
	Class B or C	0	
6.	County snowmobile trail coordinator priority points. Note: County is allowed 2 points maximum for ALL trail segments submitted.	Max points: 2	
	High priority.	2	
	Medium priority.	1	
	No priority.	0	
7.	Deductions if trail segment contains any of the following: (<i>check all that apply</i>)	Max deduction: -8	
	New bridge, major bridge rehab or major trail rehab	-3	
	Trail segment is parallel (within 5 miles) to another funded segment	-3	
	Trail runs to a body of water. (<i>no deduction for use of a bridge to cross</i>)	-2	
(Maximum Points: 16) TOTAL			10

*Please verify that all sections of this form have been completed,
and all required attachments included prior to submittal. Incomplete applications will be denied.*

Trail 1 Potential New Miles T48 R10 S12,13,24&25



Trail 1 Potential New Miles T48 R10 S12,13,24&25



BAYFIELD COUNTY

Snowmobile Map 2021-22

FOR EMERGENCY MEDICAL ASSISTANCE, DIAL 911.

Please provide your location look for the nearest addressing number sign and trail intersections to the nearest roadway.

55050

COUNTY RD.

LEGEND

Snowmobile Trail Symbols

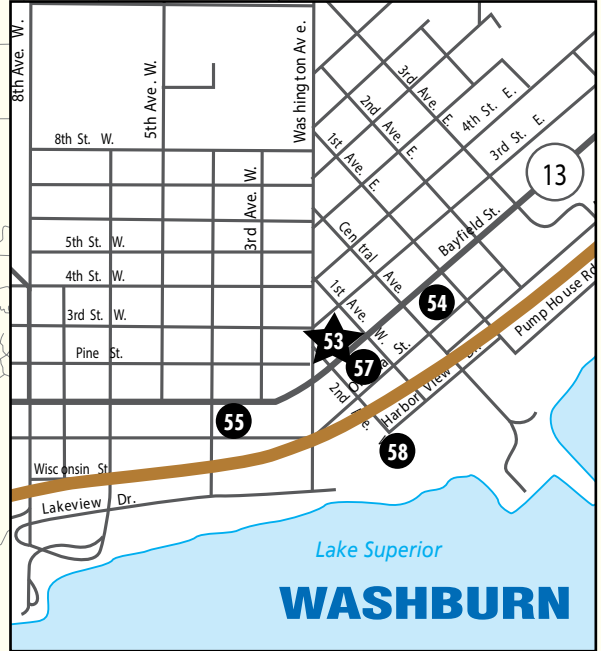
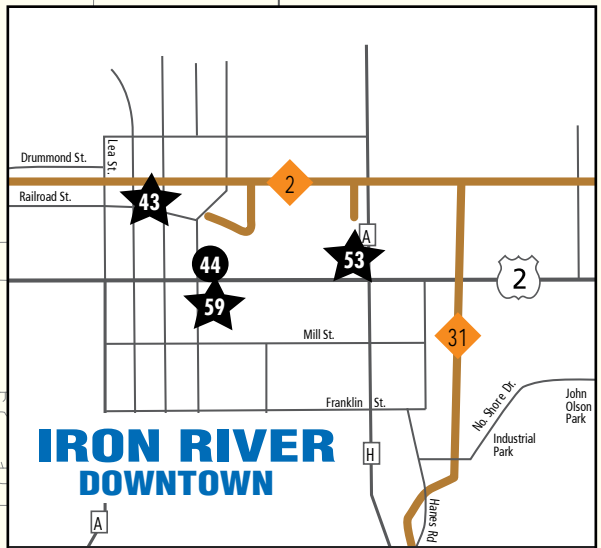
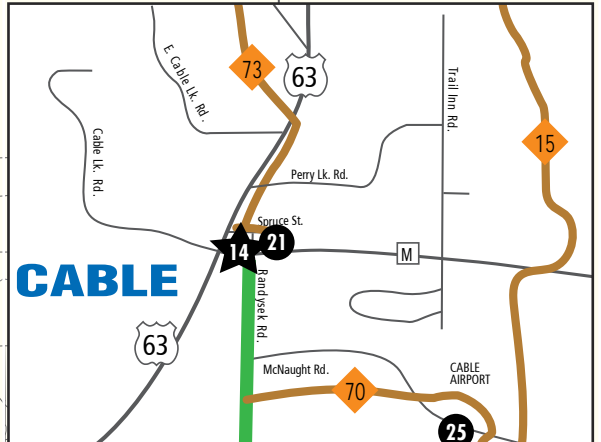
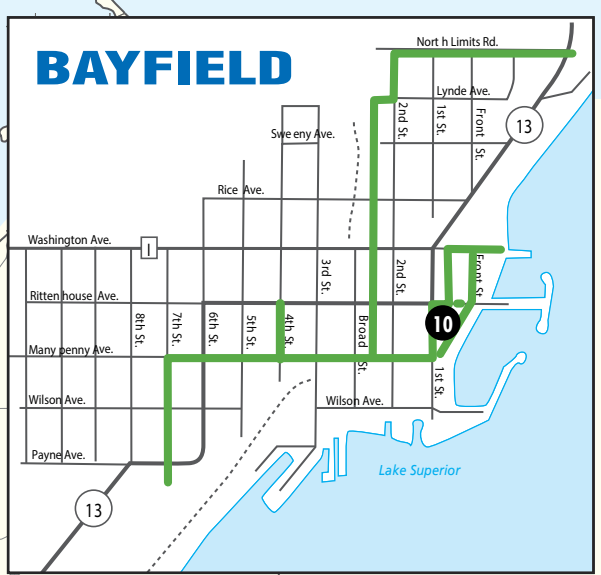
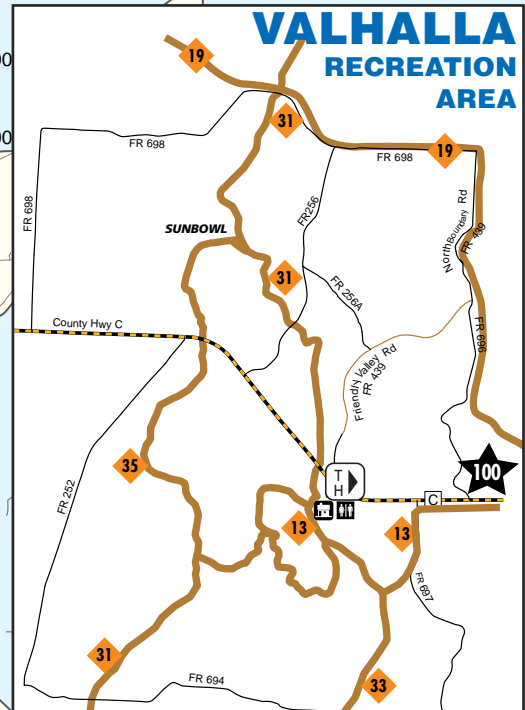
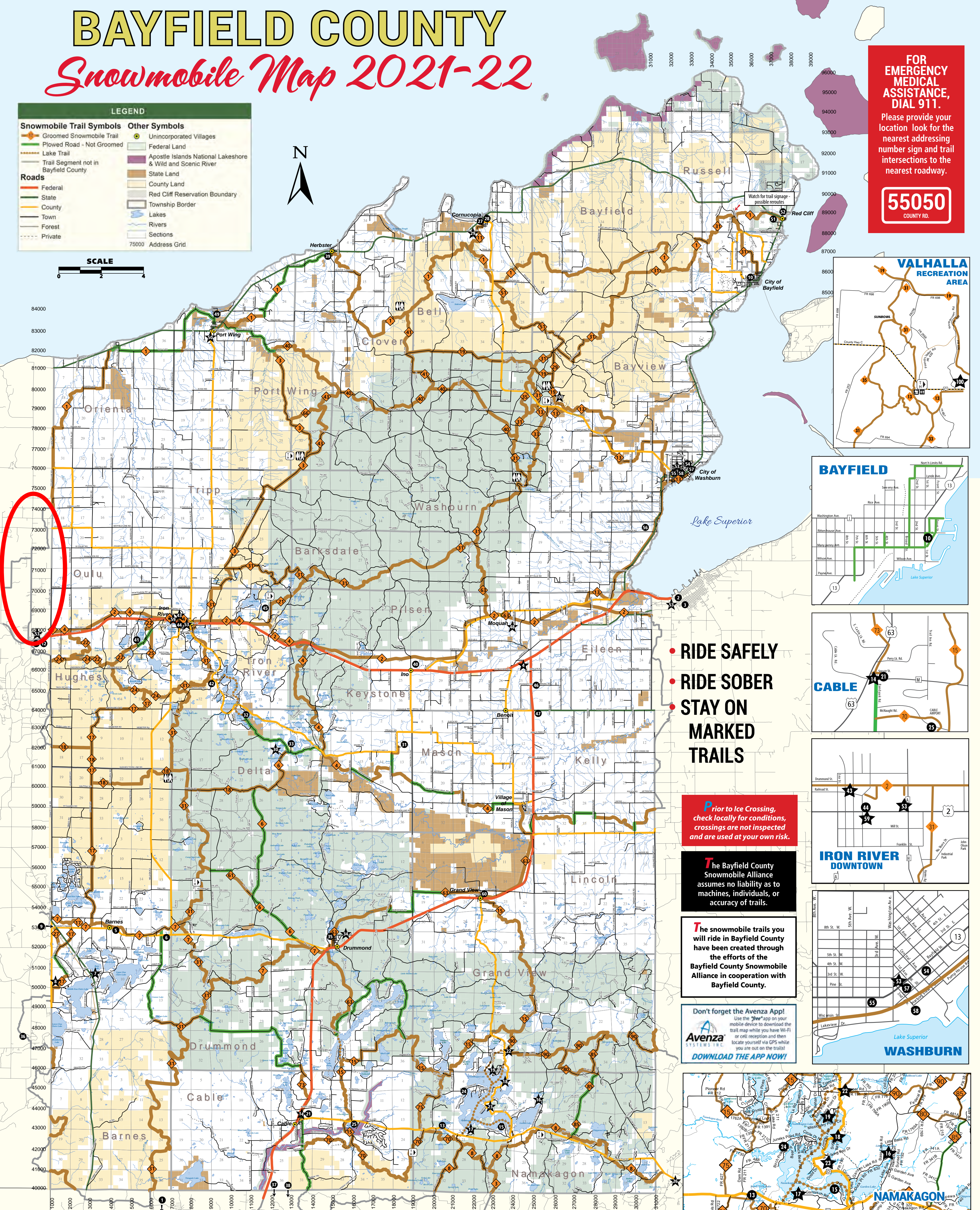
- Groomed Snowmobile Trail
- Plowed Road - Not Groomed
- Lake Trail
- Trail Segment not in Bayfield County

Roads

- Federal
- State
- County
- Town
- Forest
- Private

Other Symbols

- Unincorporated Villages
- Federal Land
- Apostle Islands National Lakeshore & Wild and Scenic River
- State Land
- County Land
- Red Cliff Reservation Boundary
- Township Border
- Lakes
- Rivers
- Sections
- 75000 Address Grid



- RIDE SAFELY
- RIDE SOBER
- STAY ON MARKED TRAILS

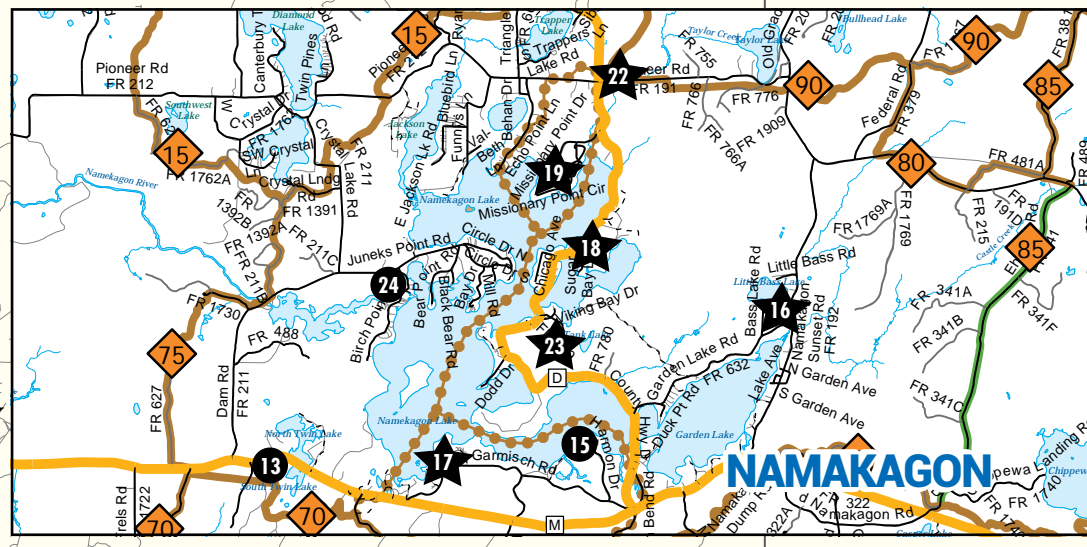
Prior to Ice Crossing, check locally for conditions, crossings are not inspected and are used at your own risk.

The Bayfield County Snowmobile Alliance assumes no liability as to machines, individuals, or accuracy of trails.

The snowmobile trails you will ride in Bayfield County have been created through the efforts of the Bayfield County Snowmobile Alliance in cooperation with Bayfield County.

Don't forget the Avenza App! Use the "Free" app on your mobile device to download the trail map while you have Wi-Fi or cell reception and then locate yourself via GPS while you are out on the trails!

DOWNLOAD THE APP NOW!



Stop by these businesses and express your thanks for their support!

- ★ = Gas Available
- 1 2 SLEDS AND A TRAILER, Grey Eagle, MN
- 2 ASHLAND SUPER 8, Ashland
- 3 MEMORIAL MEDICAL CENTER, Ashland
- 4 PAGAC'S BAR, Ashland
- 5 BARNES TRADING POST, Barnes
- 6 DOORNY'S INN, Barnes
- ★ JIM'S BAIT & CONVENIENCE STORE, Barnes
- ★ P.J.'S CABIN STORE, Barnes
- 9 R-C DECOY INN, Barnes
- 10 THE BAYFIELD INN, Bayfield
- 11 BRULE RIVER MOTEL & CAMPGROUND, Brule
- 12 KRO BAR AND GRILL, Brule
- 13 AMMO'S EVERGREEN TAVERN, Cable
- 14 CABLE TRIPLE G, Cable
- 15 GARMISCH INN, Cable
- ★ HANK'S LANDING, Cable
- ★ LAKEWOODS RESORT & SPORTS BAR, Cable
- ★ THE LOON SALOON, LLC, Cable
- ★ MOGASHEEN RESORT, Cable
- 20 NAMAKAGON TRAIL GROOMERS, Cable
- ★ NORTH COUNTRY VACATION RENTALS, Cable
- ★ PIONEER BAR, Cable
- ★ PLA-MOR BAR & RESTAURANT, Cable
- ★ STAUEMEYER'S FOUR SEASONS RESORT, Cable
- ★ TELEMAR CONDOMINIUMS, Cable
- ★ CLAM LAKE JUNCTION, Clam Lake
- ★ FAT RADISH, Cornucopia
- ★ SISKIWIW RIVER CABINS, Cornucopia
- ★ STAR NORTH, Cornucopia
- ★ FLYING EAGLE RESORT, Delta
- ★ FROSTY'S OUTPOST, Delta
- ★ PINE POINT LODGE, Delta
- ★ SCENIC DRIVE RESORT, Delta
- ★ BEAR COUNTRY, Drummond
- ★ DRUMMOND LAKE CAMPGROUND, Drummond
- ★ M&M'S Y-GO-BY, Gordon
- ★ EL ZARCO RESTAURANT & CANTINA, Grand View
- ★ HAYWARD POWER SPORTS, Hayward
- ★ NELSON LAKE LANDING RESORT & MOTEL, Hayward
- ★ WOODY'S FOOD & SPIRITS, Herbster
- ★ BIRCH GROVE CAMPGROUND BAR & GRILL, Iron River
- ★ BUSKEY BAY RESORT, Iron River
- ★ IRON RIVER AUTO PARTS, Iron River
- ★ LIQUOR IN THE WOODS, Iron River
- ★ O'BRIEN'S C-STORE, Iron River
- ★ TRI LAKE TIMBERS, Iron River
- ★ LULICH IMPLEMENT, INC., Mason
- ★ NORTHLAND LAWN, SPORT & EQUIPMENT, Mason
- ★ SELL'S PINE CREEK PIT STOP, Moquah
- ★ HOLIDAY PINES RESORT, Port Wing
- ★ JOHNSON'S STORE, Port Wing
- ★ THE COPPER CROW DISTILLERY, Red Cliff
- ★ LEGENDARY WATERS RESORT & CASINO, Red Cliff
- ★ CENEX GAS & CONVENIENCE STORES, Ashland, Iron River, Brule & Washburn
- ★ NAPA AUTO PARTS, Washburn
- ★ PATSY'S BAR & GRILL, Washburn
- ★ SPARKY'S BAR & GRILL, Washburn
- ★ WASHBURN HARDWARE & SPORT, Washburn
- ★ THE WASHBURN INN, Washburn
- ★ VALHALLA VIEW PUB 'N' GRUB, Washburn

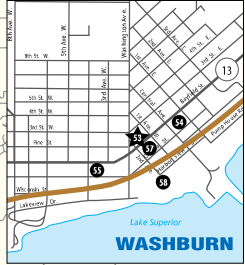
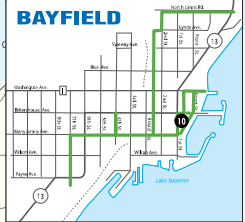
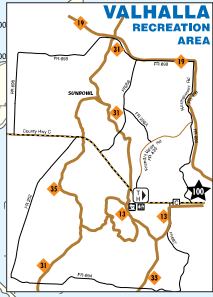
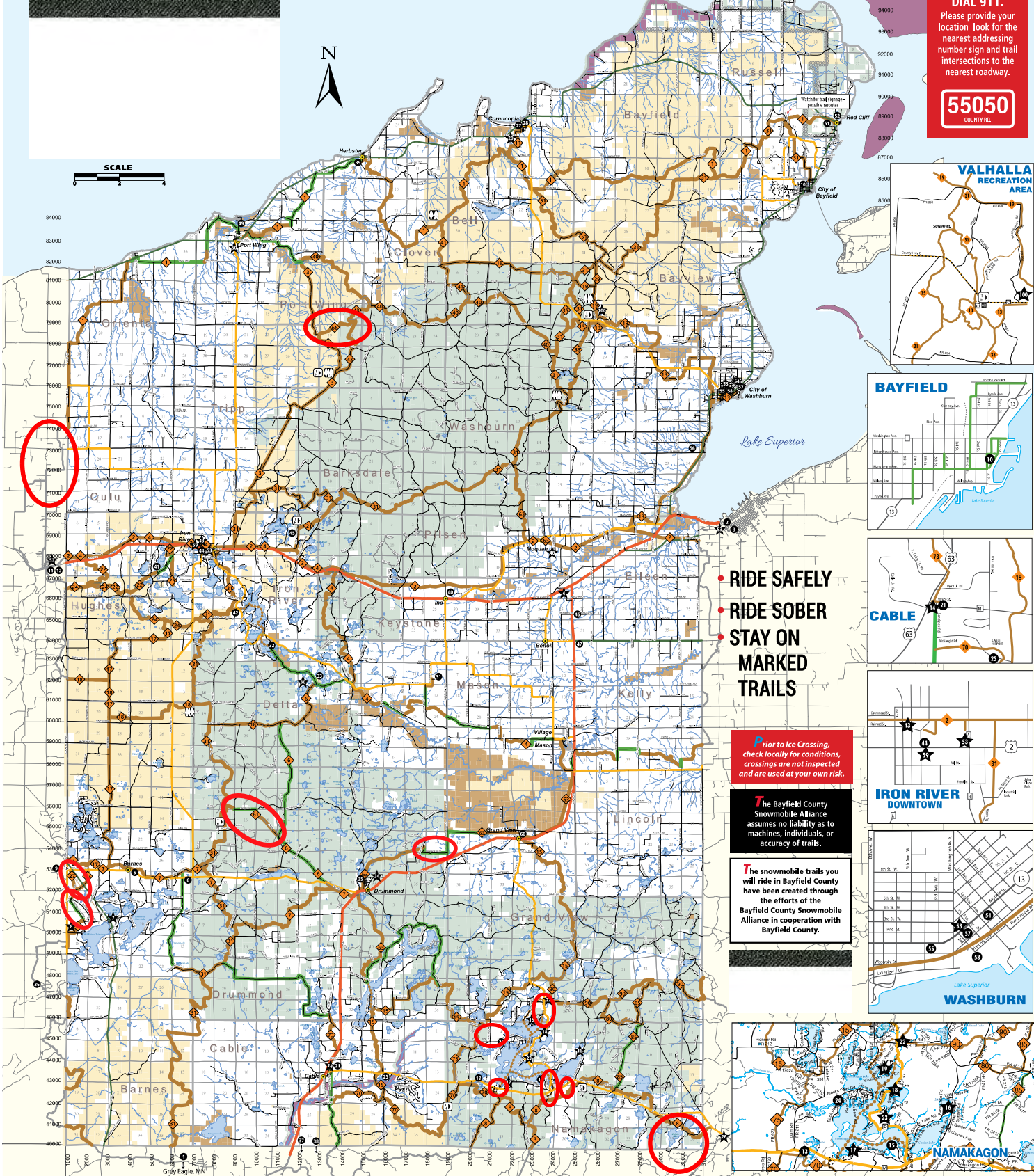


Rights to all information contained on the Bayfield County map are reserved by Bayfield County. No information may be reproduced in any form without the written consent of Bayfield County. Cartography by: Bayfield County Land Records Department. © 2020. This map is produced and distributed by the Bayfield County Tourism Department in cooperation with the Bayfield County Forestry and Parks Department and the Bayfield County Snowmobile Alliance.

BAYFIELD COUNTY

Snowmobile Map 2021-22

FOR EMERGENCY MEDICAL ASSISTANCE, DIAL 911.
Please provide your location look for the nearest addressing number sign and trail intersections to the nearest roadway.
55050
COUNTY RD.

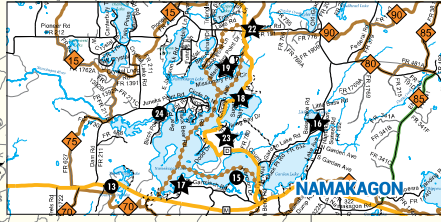


• RIDE SAFELY
• RIDE SOBER
• STAY ON MARKED TRAILS

Prior to Ice Crossing, check locally for conditions, crossings are not inspected and are used at your own risk.

The Bayfield County Snowmobile Alliance assumes no liability as to machines, individuals, or accuracy of trails.

The snowmobile trails you will ride in Bayfield County have been created through the efforts of the Bayfield County Snowmobile Alliance in cooperation with Bayfield County.



Stop by these businesses and express your thanks for their support!

- ★ Gas Available
- 1 2 SLEDS AND A TRAILER, Grey Eagle, MN
- 2 ASHLAND SUPER 8, Ashland
- 3 MEMORIAL MEDICAL CENTER, Ashland
- 4 PAGAC'S BAR, Ashland
- 5 BARNES TRADING POST, Barnes
- 6 DOOR'S INN, Barnes
- 7 JIFFY'S BAIT & CONVENIENCE STORE, Barnes
- 8 P-L'S CABIN STORE, Barnes
- 9 R-C DECOY INN, Barnes
- 10 THE BAYFIELD INN, Bayfield
- 11 BRULE RIVER MOTEL & CAMPGROUND, Brule
- 12 KRO BAR AND GRILL, Brule
- 13 AMMO'S EVERGREEN TAVERN, Cable
- 14 CABLE TRIPLE G, Cable
- 15 GARMICH INN, Cable
- 16 HANK'S LANDING, Cable
- 17 LAKEWOODS RESORT & SPORTS BAR, Cable
- 18 THE LOON SALOON, LLC, Cable
- 19 MOGASHIEN RESORT, Cable
- 20 NAMAKAGON TRAIL, GROOMERS, Cable
- 21 NORTH COUNTRY VACATION RENTALS, Cable
- 22 PIONEER BAR, Cable
- 23 PLAMOR BAR & RESTAURANT, Cable
- 24 STAUDEMAYER'S FOUR SEASONS RESORT, Cable
- 25 TELEMAR CONDOMINIUMS, Cable
- 26 CLAM LAKE JUNCTION, Clam Lake
- 27 FAT RADSH, Cornucopia
- 28 SEASIDE RIVER CABINS, Cornucopia
- 29 STAR NORTH, Cornucopia
- 30 FLYING EAGLE RESORT, Delta
- 31 FROSTY'S OUTPOST, Delta
- 32 PINE POINT LODGE, Delta
- 33 SCENIC DRIVE RESORT, Delta
- 34 BEAR COUNTRY, Drummond
- 35 DRUMMOND LAKE CAMPGROUND, Drummond
- 36 M&M'S Y-GO-BY, Gordon
- 37 EL ZARCO RESTAURANT & CANTINA, Grand View
- 38 HAYWARD POWER SPORTS, Hayward
- 39 NELSON LAKE LANDING RESORT & MOTEL, Hayward
- 40 JOHNSON'S STORE, Port Wing
- 41 WOODY'S FOOD & SPIRITS, Herbster
- 42 INO BAR & GRILL, Ino
- 43 BIRCH GROVE CAMPGROUND BAR & GRILL, Iron River
- 44 BUSKEY BAY RESORT, Iron River
- 45 IRON RIVER AUTO PARTS, Iron River
- 46 LIQUOR IN THE WOODS, Iron River
- 47 O'BRIEN'S STORE, Iron River
- 48 TRE LAKE TIMBERS, Iron River
- 49 LULLICH IMPLEMENT, INC., Mason
- 50 NORTHLAND LAWN, SPORT & EQUIPMENT, Mason
- 51 SELL'S PINE CREEK PIT STOP, Moogah
- 52 HOLIDAY PINES RESORT, Port Wing
- 53 THE COPPER CROW DISTILLERY, Red Cliff
- 54 LEGENDARY WATERS RESORT & CASINO, Red Cliff
- 55 CENEX GAS & CONVENIENCE STORES, Ashland, Iron River, Brule & Washburn
- 56 NAPA AUTO PARTS, Washburn
- 57 PATSY'S BAR & GRILL, Washburn
- 58 SPARKY'S BAR & GRILL, Washburn
- 59 WASHBURN HARDWARE & SPORT, Washburn
- 60 THE WASHBURN INN, Washburn
- 61 VALHALLA VIEW PUB 'N' GRUB, Washburn

Rights to all information contained on the Bayfield County map are reserved by Bayfield County. No information may be reproduced in any form without the written consent of Bayfield County. Cartography by Bayfield County Land Records Department, © 2020. This map is produced and distributed by the Bayfield County Tourism Department in cooperation with the Bayfield County Forestry and Parks Department and the Bayfield County Snowmobile Alliance.